

Hilda S. & H. EARL
JONES

SECTION 18 T.28S. R.6W. WM.
DOUGLAS COUNTY

REVISED ON
12-30-92

28 6 18

ATTACHMENT # 6

SEE MAP 28 6 7

Application No R-15934
Permit No. 7
"CERTIFICATE NO. 69927"

12 7
13 18

CANCELLED NO'S
900

550,000

SEE MAP 29 6 17

Property
Boundary
includes
Part of
Section 18
&
Section 19
APP# R-15934

"CERTIFICATE NO. 69927"

CANCELLED NO'S
2002
2101
2601
2103
2400

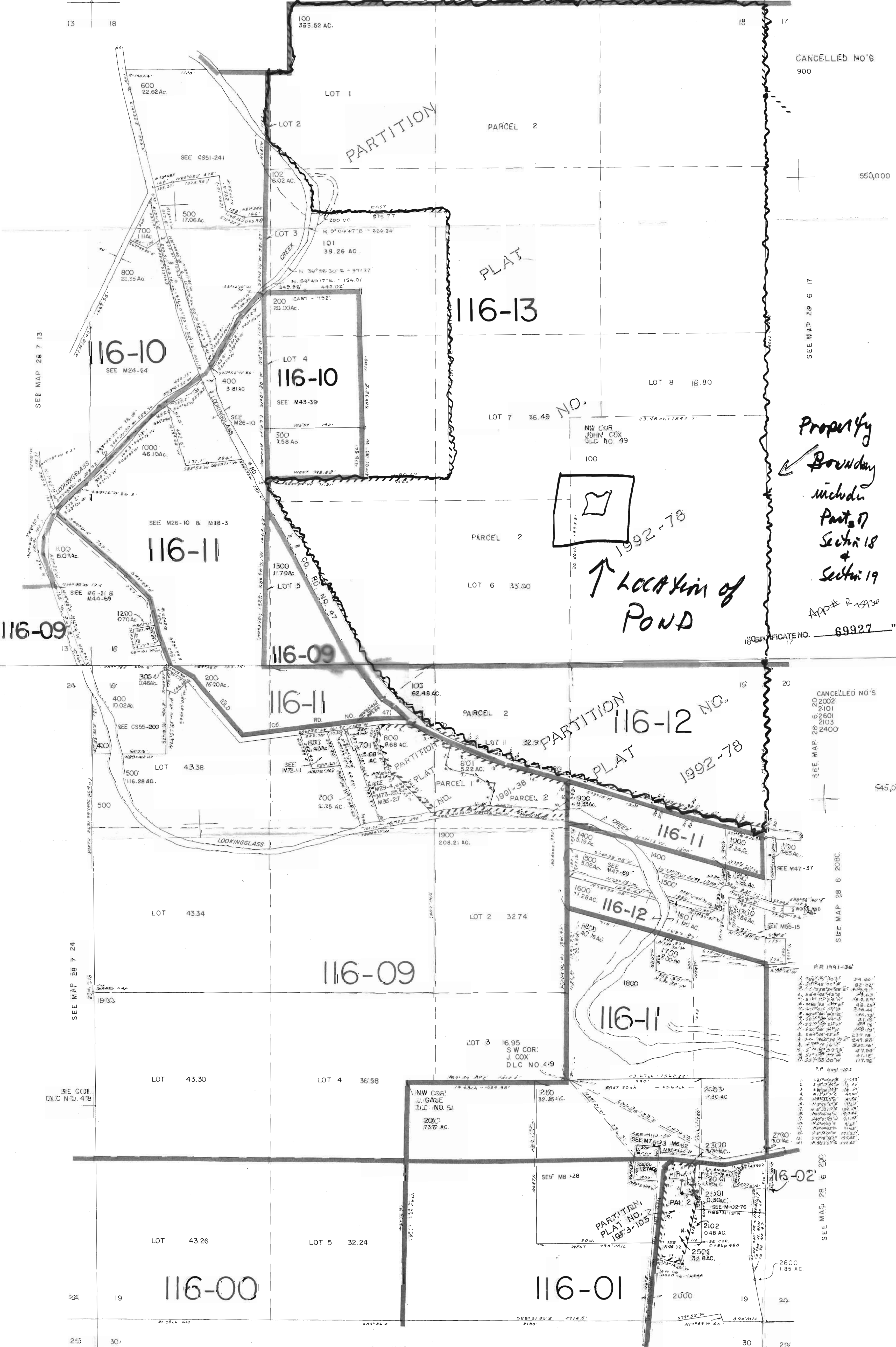
545,000

SEE MAP 28 6 20BC

P.P. 1991-36
1. 54.40'
2. 82.40'
3. 16.00'
4. 38.00'
5. 19.00'
6. 48.00'
7. 21.00'
8. 15.00'
9. 23.70'
10. 24.00'
11. 15.00'
12. 11.00'
13. 11.00'
14. 11.00'
15. 47.00'
16. 41.12'
17. 117.76'

P.P. 1992-105
1. 1553'
2. 16.00'
3. 18.00'
4. 40.00'
5. 41.00'
6. 76.00'
7. 24.00'
8. 24.00'
9. 11.00'
10. 11.00'
11. 11.00'
12. 11.00'
13. 11.00'
14. 11.00'
15. 11.00'

SEE MAP 28 6 20C



SEE MAP 28 6 30

28 6 19