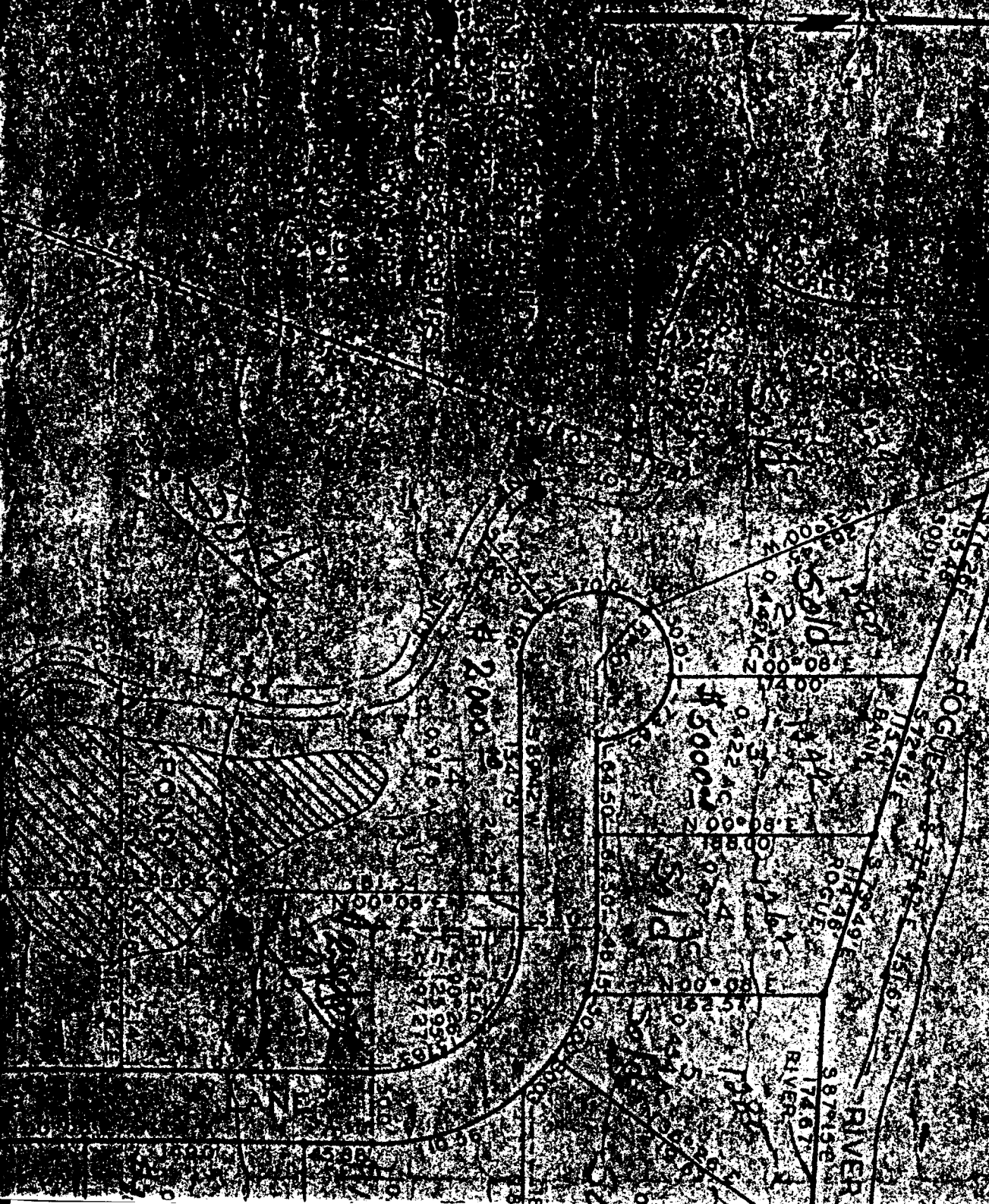


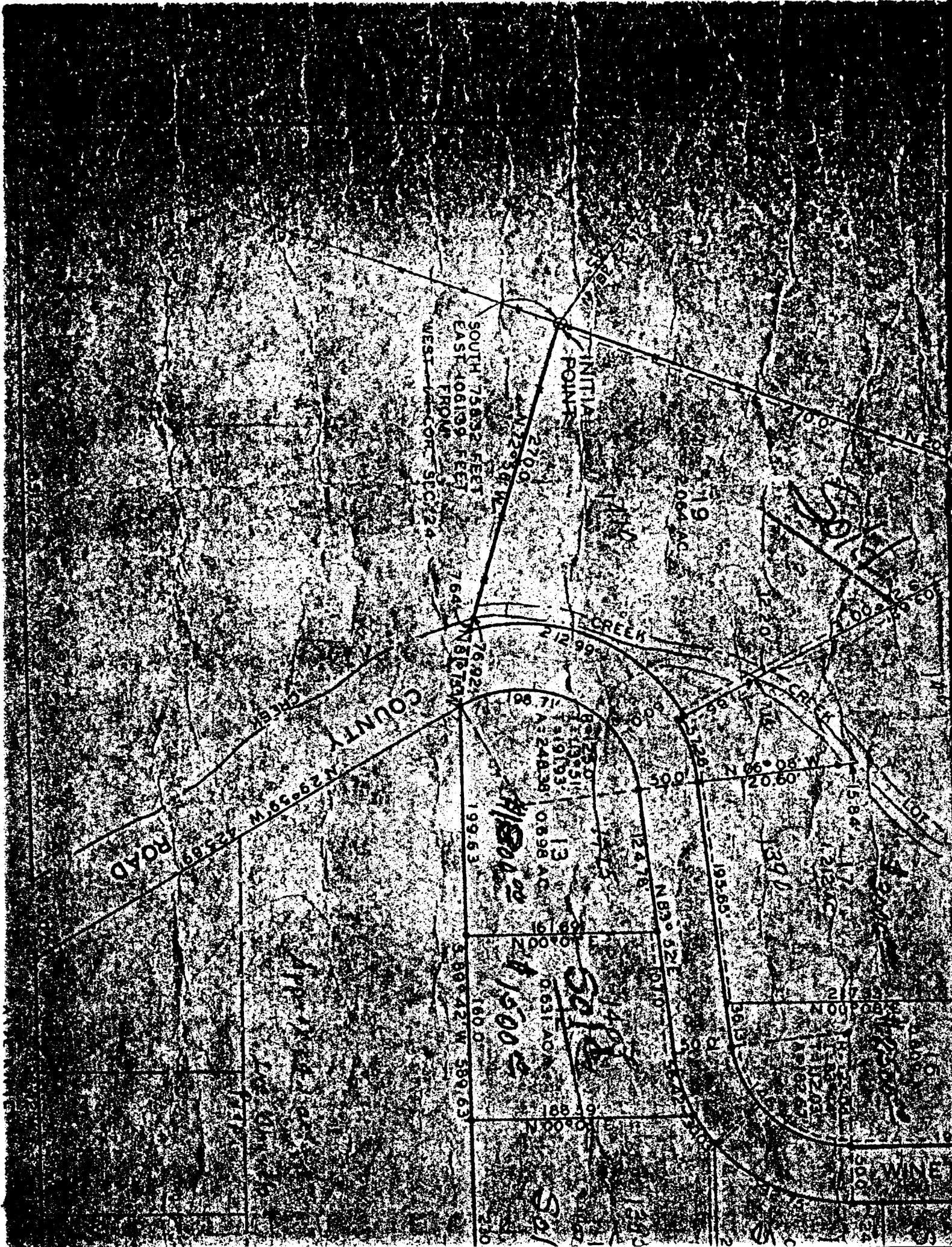
PLAN
WINTELER SUBDIVISION

AS SHOWN ON SEC. 24, T. 36 S., R. 60 W.,
JOSEPHINE COUNTY, OREGON

SCALE: 1 INCH = 100 FEET

OCTOBER 21, 1962





SOUTH 75832 FEET
EAST 406139 FEET
FROM
WEST CORNER SEC 24

INITIAL
POINT

CREEK

COUNTY

ROAD

1500

1500

76.92
212.99
199.63
5.80
180.0
280

13
0.938 AC

N 83° 32' E

195.65

NOUP 68.8

WINE

WEST CORNER SEC 24

SOUTH 75832 FEET
EAST 406139 FEET
FROM

2700

2700

2064 AC

19

210.0

210.0

210.0

210.0

210.0

210.0

76.92

212.99

199.63

5.80

180.0

280

13

0.938 AC

N 83° 32' E

195.65

NOUP 68.8

WINE

210.0

210.0

210.0

210.0

210.0

210.0

210.0

76.92

212.99

199.63

5.80

180.0

280

13

0.938 AC

N 83° 32' E

195.65

NOUP 68.8

WINE

210.0

210.0

210.0

210.0

210.0

210.0

210.0

76.92

212.99

199.63

5.80

180.0

280

13

0.938 AC

N 83° 32' E

195.65

NOUP 68.8

WINE

210.0

210.0

210.0

210.0

210.0

210.0

210.0

76.92

212.99

199.63

5.80

180.0

280

13

0.938 AC

N 83° 32' E

195.65

NOUP 68.8

WINE

210.0

210.0

210.0

210.0

210.0

210.0

210.0

76.92

212.99

199.63

5.80

180.0

280

13

0.938 AC

N 83° 32' E

195.65

NOUP 68.8

WINE

210.0

210.0

210.0

210.0

210.0

210.0

210.0

76.92

212.99

199.63

5.80

180.0

280

13

0.938 AC

N 83° 32' E

195.65

NOUP 68.8

WINE

210.0

210.0

210.0

210.0

210.0

210.0

210.0

76.92

212.99

199.63

5.80

180.0

280

13

0.938 AC

N 83° 32' E

195.65

NOUP 68.8

WINE

210.0

210.0

210.0

210.0

210.0

210.0

210.0

76.92

212.99

199.63

5.80

180.0

280

13

0.938 AC

N 83° 32' E

195.65

NOUP 68.8

WINE

210.0

210.0

210.0

210.0

210.0

210.0

210.0

76.92

212.99

199.63

5.80

180.0

280

13

0.938 AC

N 83° 32' E

195.65

NOUP 68.8

WINE

210.0

210.0

210.0

210.0

210.0

210.0

210.0

76.92

212.99

199.63

5.80

180.0

280

13

0.938 AC

N 83° 32' E

195.65

NOUP 68.8

WINE

210.0

210.0

210.0

210.0

210.0

210.0

210.0

76.92

212.99

199.63

5.80

180.0

280

13

0.938 AC

N 83° 32' E

195.65

NOUP 68.8

WINE

210.0

210.0

210.0

210.0

210.0

210.0

210.0

76.92

212.99

199.63

5.80

180.0

280

13

0.938 AC

N 83° 32' E

195.65

NOUP 68.8

WINE

210.0

210.0

210.0

210.0

210.0

210.0

210.0