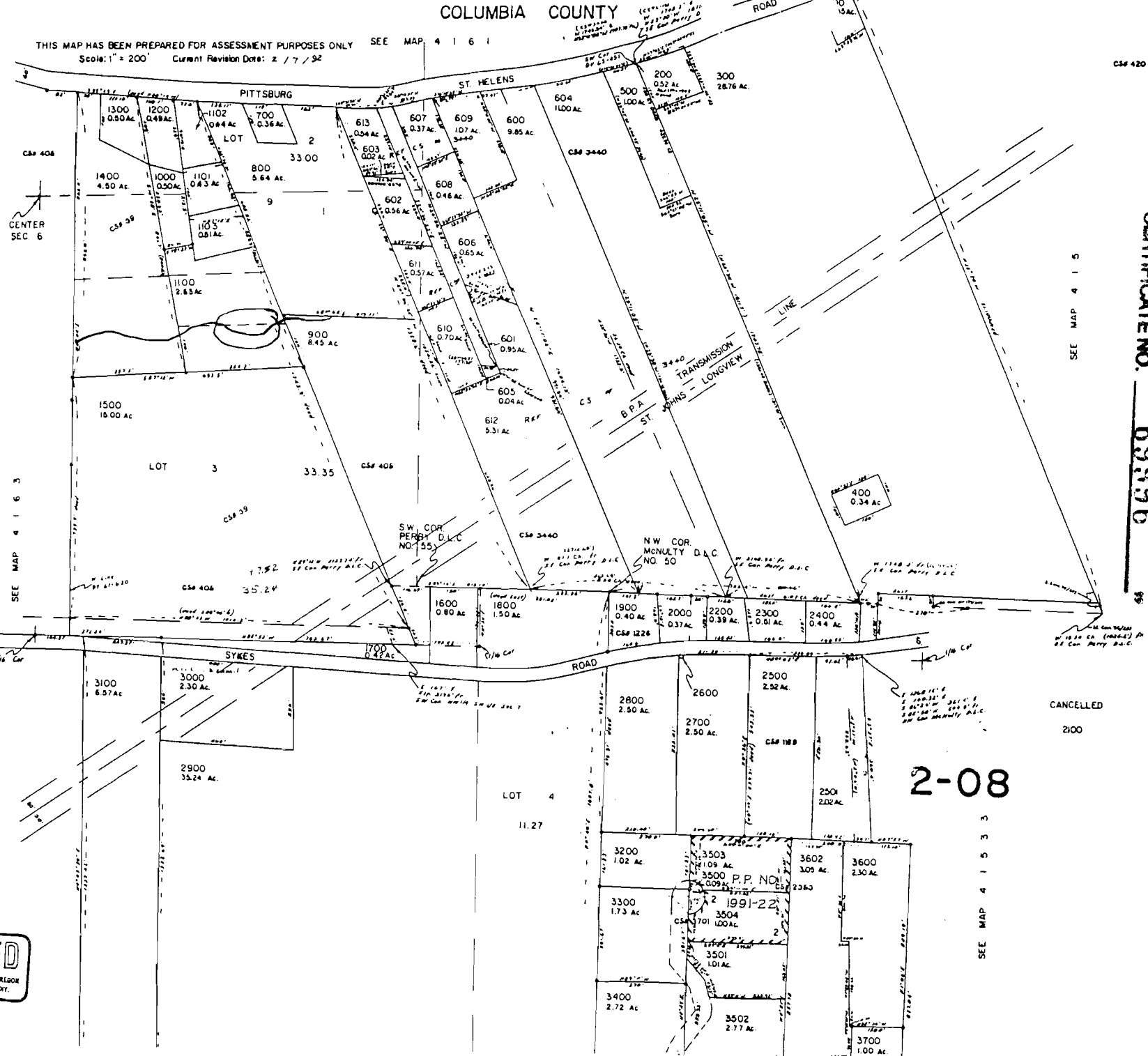


THIS MAP HAS BEEN PREPARED FOR ASSESSMENT PURPOSES ONLY SEE MAP 4 1 6 1  
Scale: 1" = 200' Current Revision Date: 2/7/92

*Paul C. Thayer  
P.O. Box 642  
St. Helens, OR,  
97057*



CERTIFICATE NO. 69996

SEE MAP 4 1 5

CANCELLED  
2100

2-08

SEE MAP 4 1 5 3

RECEIVED  
MAR 19 1992  
DEPT. OF REVENUE STATE OF OREGON  
ASSESSMENT & APPRAISAL DIV.