

This map was prepared for assessment purpose only.

CERTIFICATE NO. 70012

T.2N R42E W.M. WALLOWA COUNTY

Application No R-7622
Permit No.

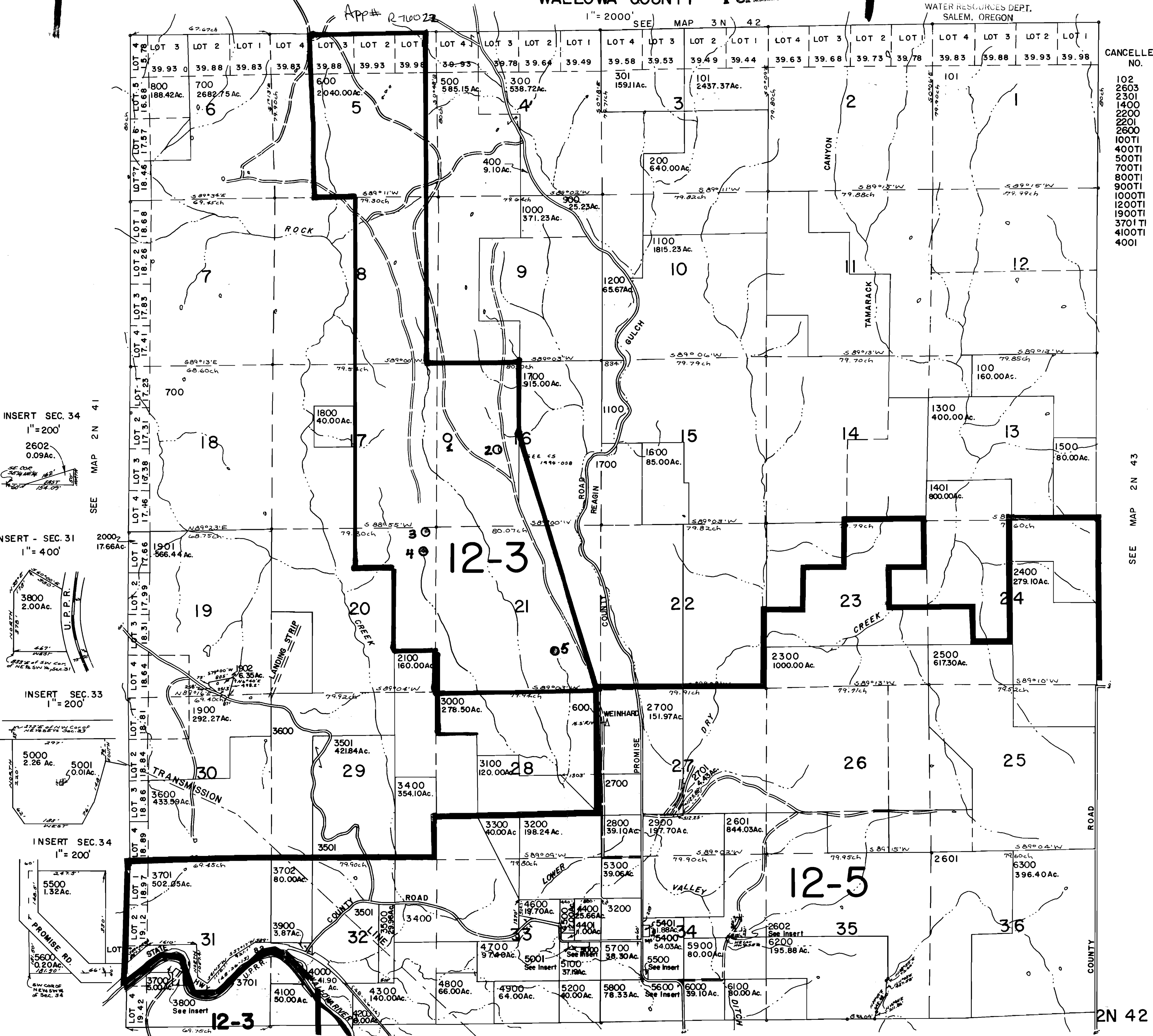
RECEIVED

2N 42

DEC 27 1994

WATER RESOURCES DEPT.
SALEM, OREGON

1" = 2000' SEE MAP 3 N 42



- CANCELLED NO.
- 102
 - 2603
 - 2301
 - 1400
 - 2200
 - 2201
 - 2600
 - 100TI
 - 400TI
 - 500TI
 - 700TI
 - 800TI
 - 900TI
 - 1000TI
 - 1200TI
 - 1900TI
 - 3701TI
 - 4100TI
 - 400I

INSERT SEC. 34
1" = 200'
2602
0.09Ac.

INSERT - SEC. 31
1" = 400'

INSERT SEC. 33
1" = 200'

INSERT SEC. 34
1" = 200'

SEE MAP 2 N 43

2N 42

SEE MAP IN 42