

This map was prepared for assessment purpose only.

App# 270023

T.2N R.42E W.M. WALLOWA COUNTY

Application No. R-76023 Permit No.

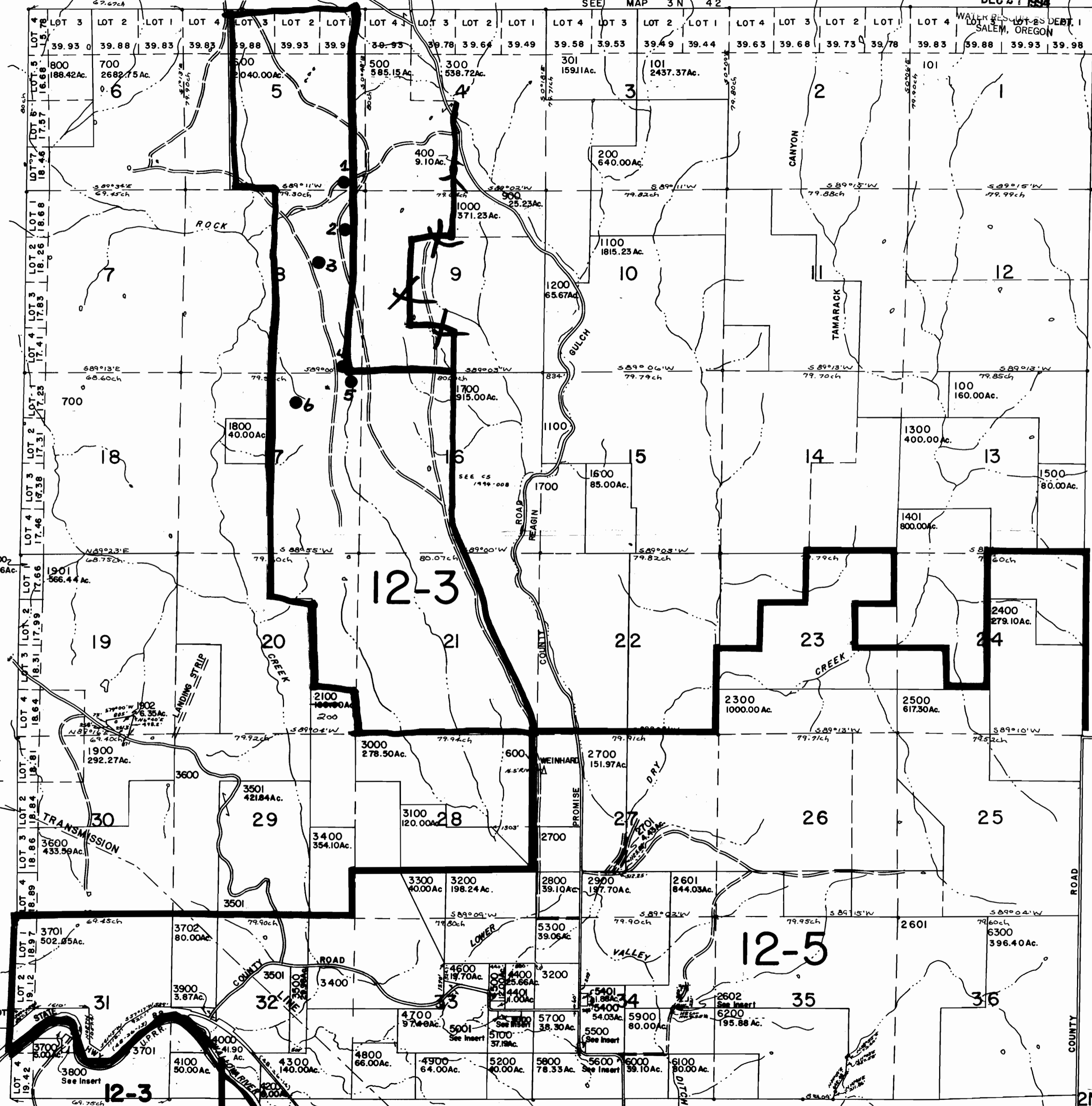
RECEIVED

2N 42

DEC 27 1994

CERTIFICATE NO. 70013

1" = 2000' SEE MAP 3N 42



- CANCELLED NO.
- 102
 - 2603
 - 2301
 - 1400
 - 2200
 - 2201
 - 2600
 - 100TI
 - 400TI
 - 500TI
 - 700TI
 - 800TI
 - 900TI
 - 1000TI
 - 1200TI
 - 1900TI
 - 3701 TI
 - 4100TI
 - 400I

INSERT SEC. 34
1" = 200'
2602
0.09Ac.

INSERT - SEC. 31
1" = 400'
2000
17.66Ac.

INSERT SEC. 33
1" = 200'
5000
2.26 Ac.

INSERT SEC. 34
1" = 200'
5500
1.32Ac.

SEE MAP 2N 43

SEE MAP IN 42

2N 42