

I-2

This map was prepared for assessment purpose only.

App# R70024

CERTIFICATE NO. 70014

T.2N R42E W.M. WALLOWA COUNTY

1" = 2000' SEE MAP 3 N 42

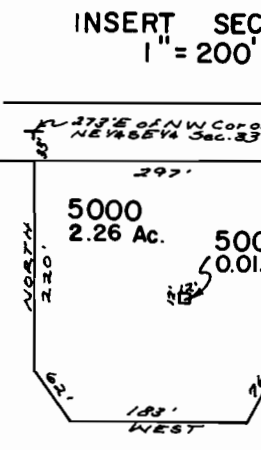
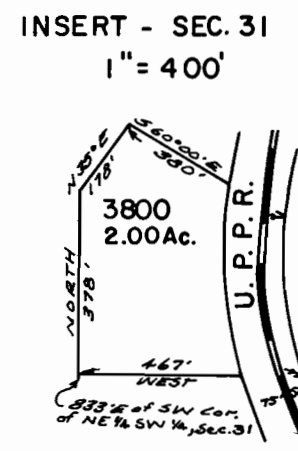
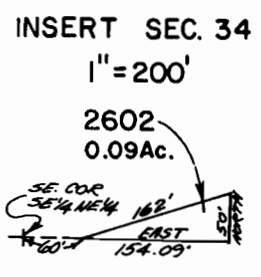
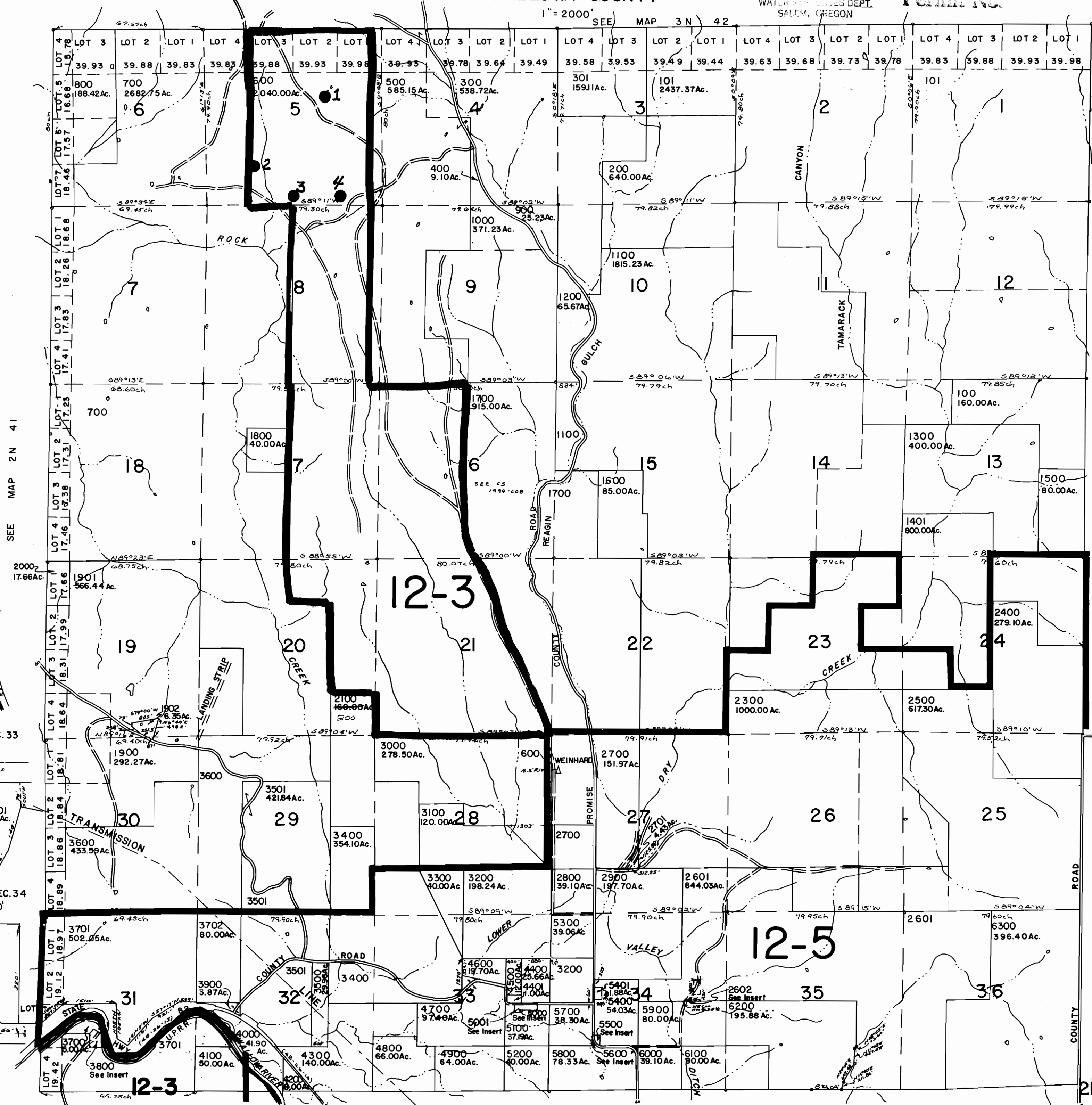
RECEIVED

DEC 27 1994

WATER RESOURCES DEPT. SALEM, OREGON

Application No. 276042N 42 Permit No.

CANCELLED NO. 102, 2603, 2301, 1400, 2200, 2201, 2600, 100TI, 400TI, 500TI, 700TI, 800TI, 900TI, 1000TI, 1200TI, 1900TI, 3701 TI, 4100TI, 400I



SEE MAP 2 N 43

SEE MAP IN 42

2N 42