

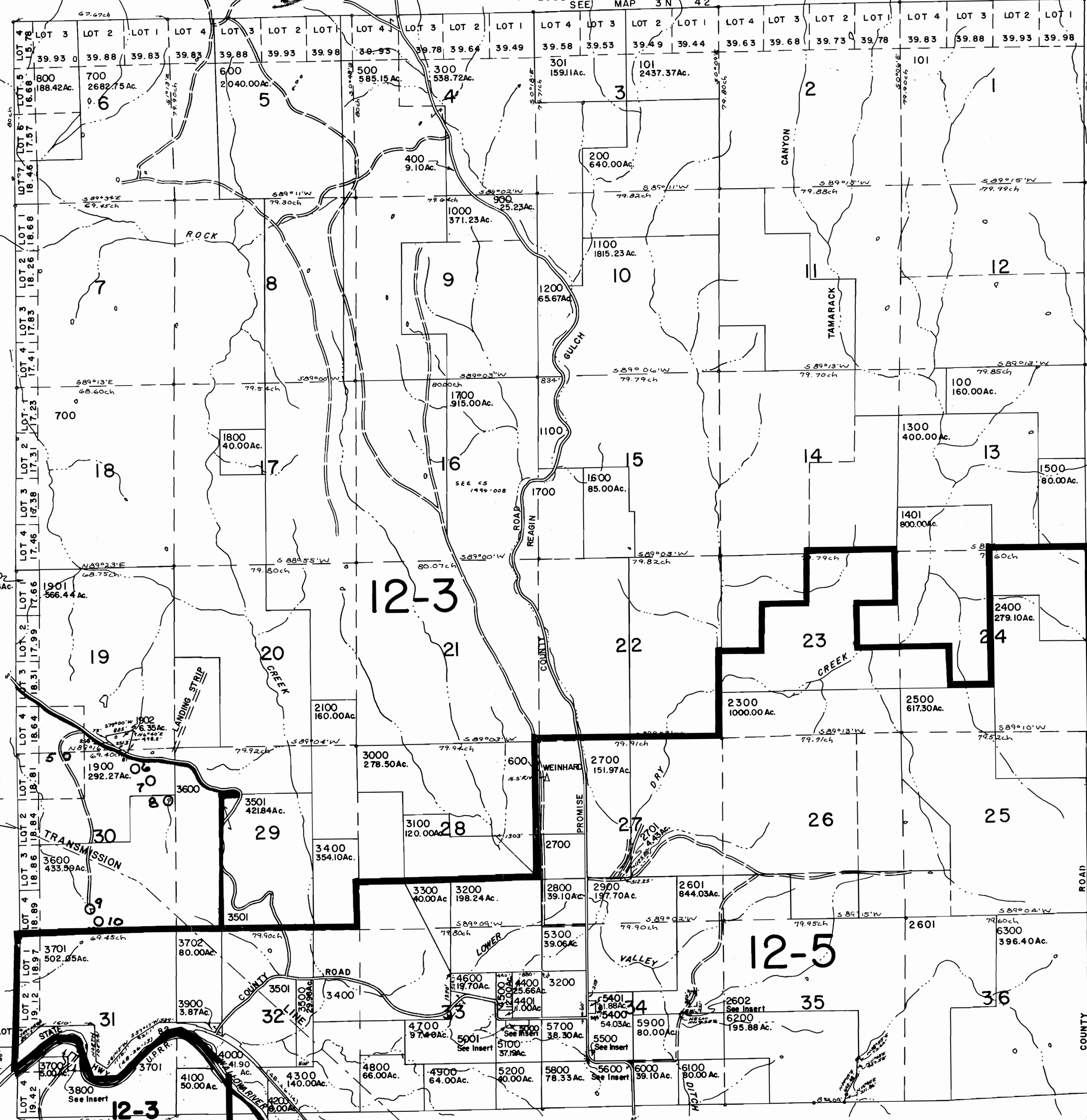
This map was prepared for assessment purpose only.

T.2N R.42E W.M. Application No. 76025 WALLOWA COUNTY Permit No.

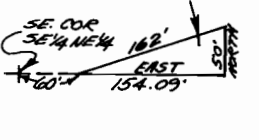
RECEIVED
DEC 27 1994
WATER RESOURCES DEPT.
SALEM, OREGON

2N 42

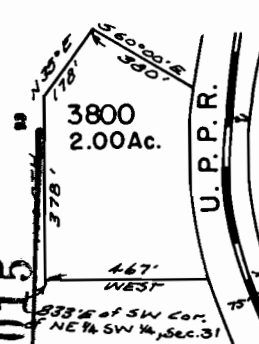
1" = 2000'
SEE MAP 3 N 42



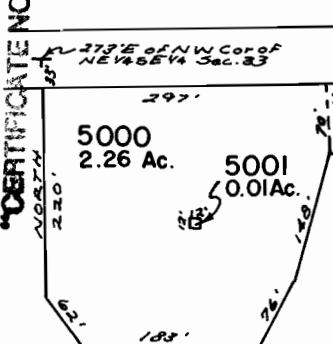
INSERT SEC. 34
1" = 200'
2602
0.09Ac.



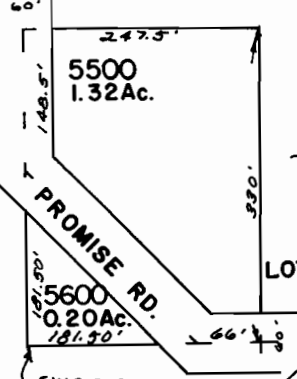
INSERT - SEC. 31
1" = 400'
2000-
17.66Ac.



INSERT SEC. 33
1" = 200'
5000
2.26 Ac.



INSERT SEC. 34
1" = 200'
5500
1.32Ac.



CANCELLED NO.
102
2603
2301
1400
2200
2600
2201
100TI
400TI
500TI
700TI
800TI
900TI
1000TI
1200TI
1900TI
3701 TI
4100TI
4001

SEE MAP 2 N 43

SEE MAP IN 42

2N 42

App# 276025

711 994