

This map was prepared for assessment purpose only.

RECEIVED

DEC 27 1994

SE 1/4 SEC. 1 T.29S. R. 6 W. W.M.

DOUGLAS COUNTY

Permit No.

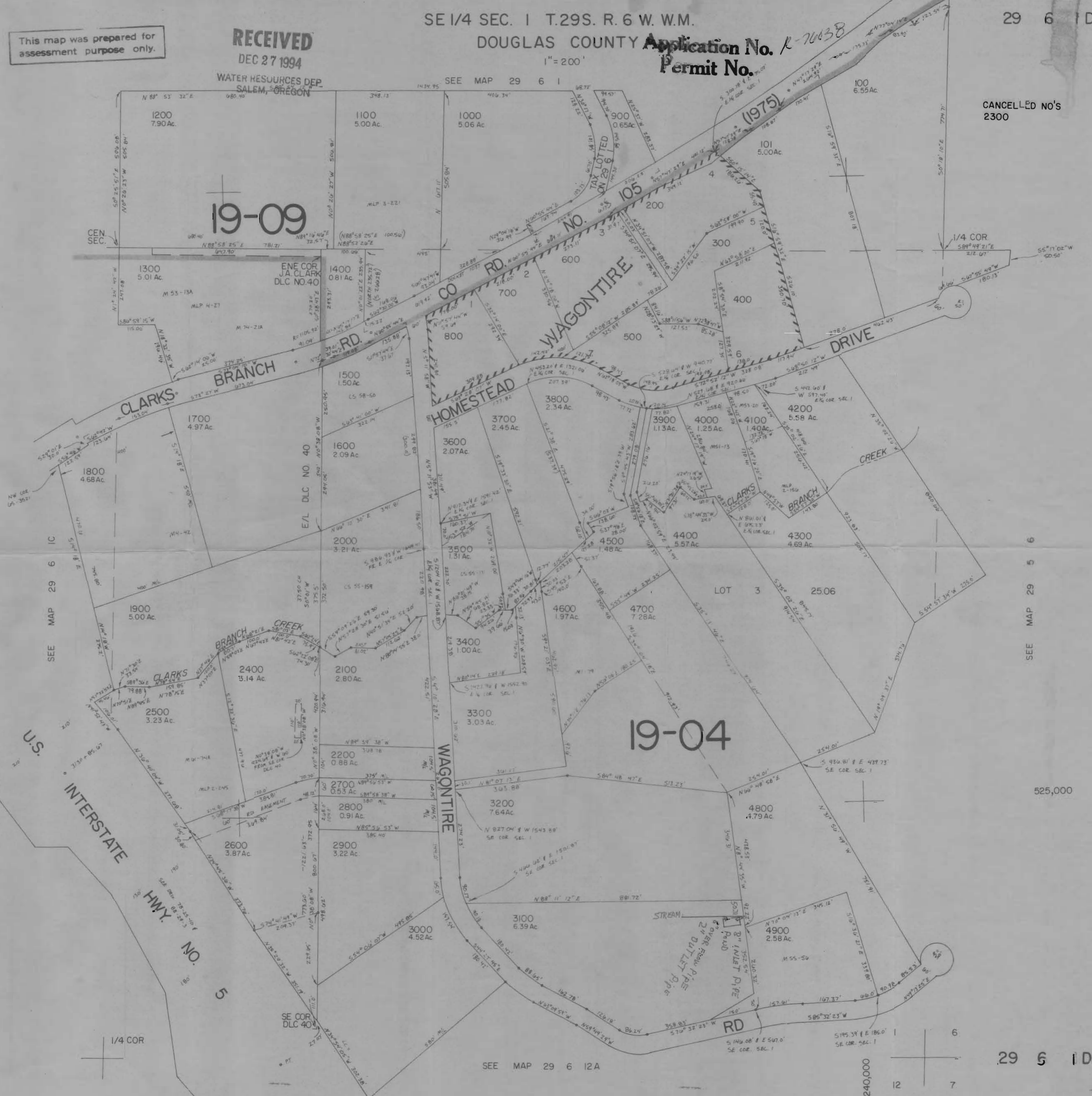
R-70638

29 6 1D

1" = 200'

SEE MAP 29 6 1

CANCELLED NO'S 2300



SEE MAP 29 6 1C

525,000

29 6 1D

1,240,000

12

7