

SECTION 27 T.25S. R.6W. W.M.  
DOUGLAS COUNTY

REVISED ON  
5-27-94

25 6 27

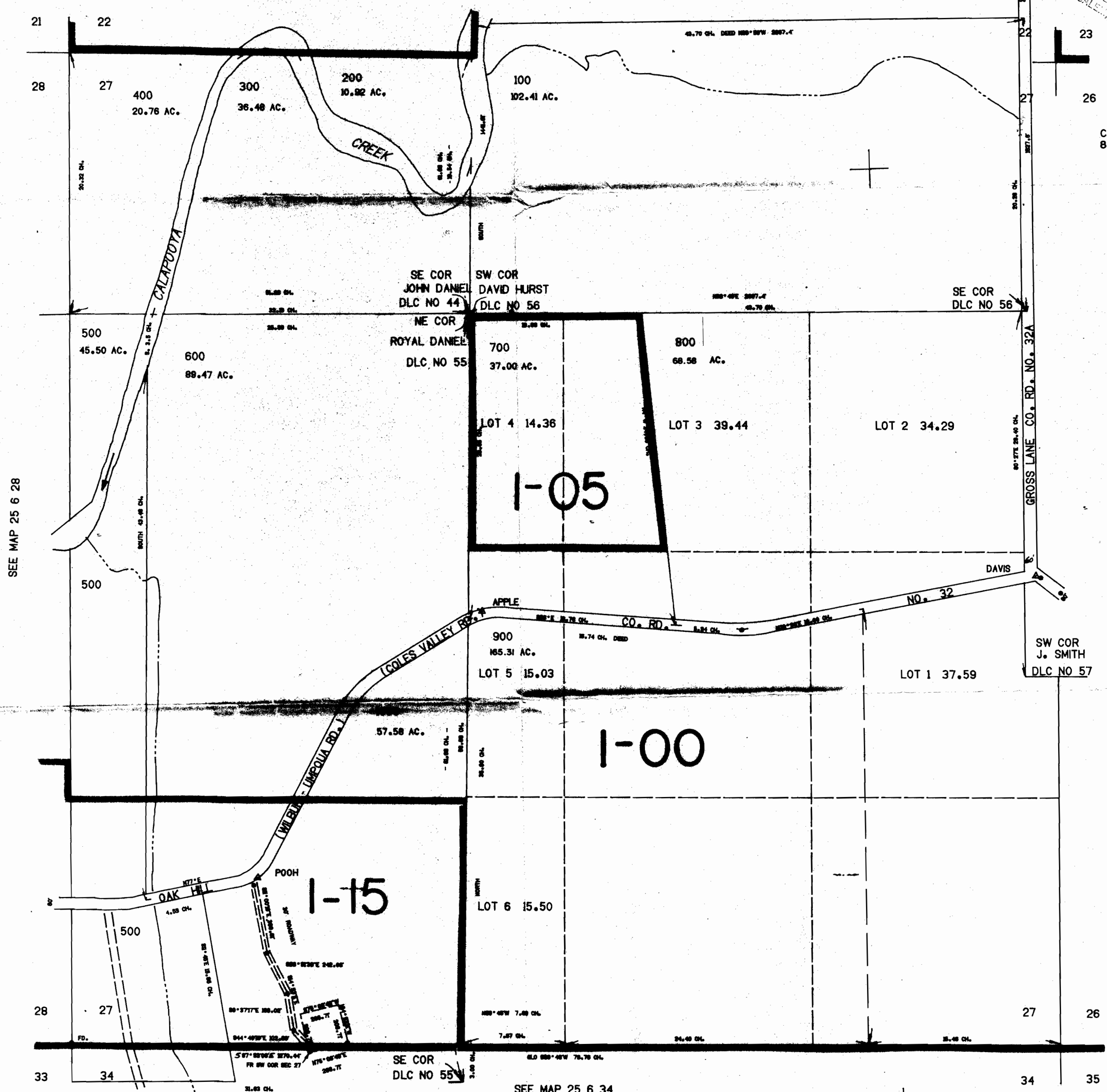
THIS MAP WAS PREPARED FOR  
ASSESSMENT PURPOSE ONLY.

Application No. R-76045  
Permit No.

SEE MAP 25 6 28 CERTIFICATE NO. 70033

RECEIVED  
DEC 27 1994  
WATER DIVISION  
SALEM, OREGON

CANCELLED NO'S  
801



SEE MAP 25 6 28

SEE MAP 25 6 26

SEE MAP 25 6 34

630.000

25 6 27