

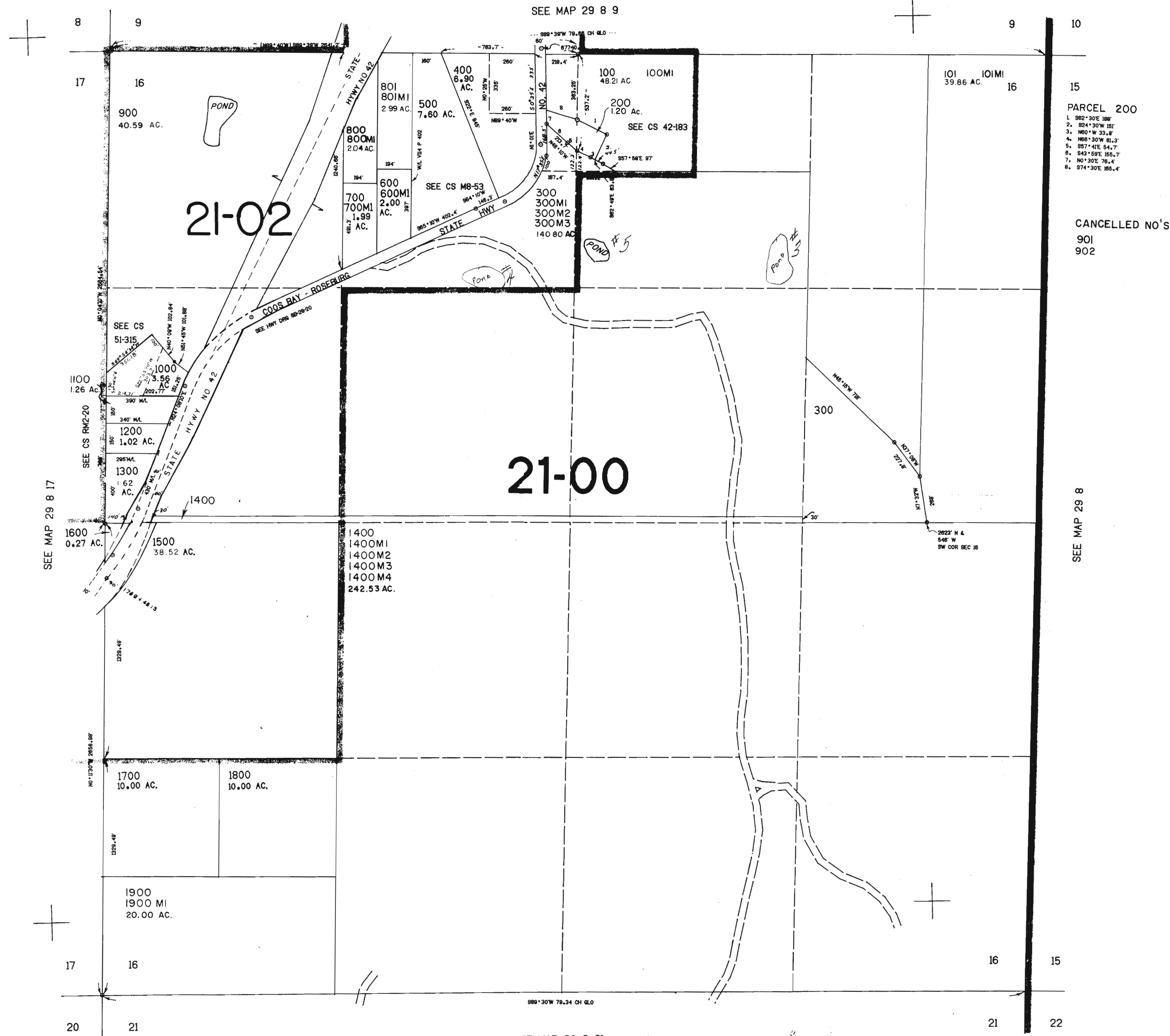
SECTION 16 T.29S. R.8W. W.M.
DOUGLAS COUNTY

29 8 16
DEC 29 1994
WATER RESOURCES DIVISION
SALEM, OREGON

THIS MAP WAS PREPARED FOR
ASSESSMENT PURPOSE ONLY.

1"=400'

"CERTIFICATE NO. 70079"



PARCEL 200
 1. S82°30'E 188'
 2. S24°30'W 151'
 3. N80°W 33.8'
 4. N88°30'W 81.3'
 5. S57°41'E 54.7'
 6. S43°59'E 155.7'
 7. N0°30'E 76.4'
 8. S74°30'E 165.4'

CANCELLED NO'S
 901
 902

517

THIS MAP WAS PREPARED FOR ASSESSMENT PURPOSE ONLY.

SECTION 31 T.28S. R.8W. W.M.
SECTION 36 T.28S. R.9W. W.M.
DOUGLAS COUNTY

1" = 400'

Application No. R-76092
Permit No.

28 8 31

RECEIVED

DEC 29 1994

CERTIFICATE NO.

70079

WATER RIGHTS DEPT.
SALEM, OREGON

SEE MAP 28 8

SEE MAP 28 9 36
COOS COUNTY

SEE MAP 28 8 32

COOS

800
40.00 AC.

21-04

TRANSFERRED FROM
COOS CO
PER ORS 201.105

LOT 4 42.39

LOT 3 42.37

LOT 2 42.34

LOT 1 42.32

100
329.42 AC.

200
40.00 AC.

21-02

300
152.42 AC.

21-02

400
0.20 AC.

21-00

700
78.62 AC.

21-00

533,000

36

31

6

R 9

R 8

SEE MAP 29 8 6

31

32

6

5

28 8 31

0.000