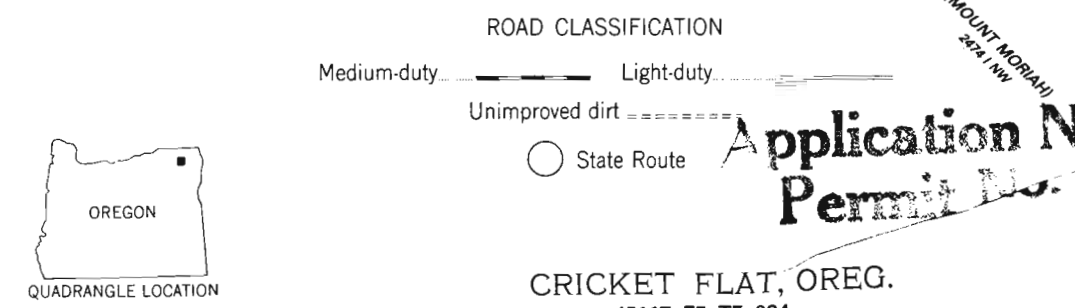
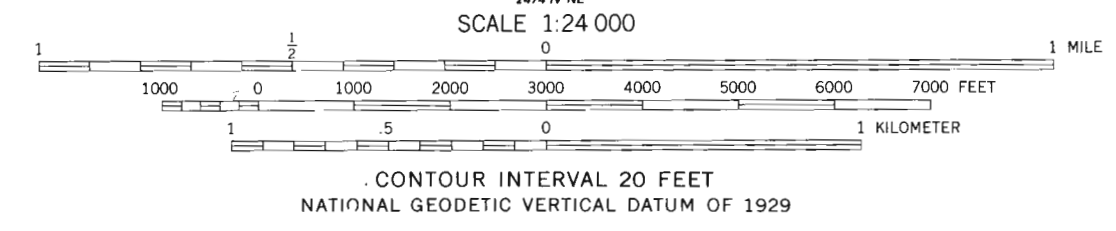
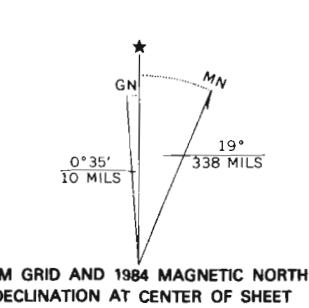


CERTIFICATE NO. 70086
Application # R-74100

Mapped, edited, and published by the Geological Survey
Control by USGS and NOS/NOAA
Topography by photogrammetric methods from aerial photographs taken 1959. Field checked 1964
Polyconic projection. 1927 North American datum
10,000-foot grid based on Oregon coordinate system, north zone
1000-meter Universal Transverse Mercator grid ticks, zone 11, shown in blue
To place on the predicted North American Datum 1983 move the projection lines 17 meters north and 80 meters east as shown by dashed corner ticks
Fine red dashed lines indicate selected fence lines



THIS MAP COMPLIES WITH NATIONAL MAP ACCURACY STANDARDS
FOR SALE BY U. S. GEOLOGICAL SURVEY, DENVER, COLORADO 80225, OR RESTON, VIRGINIA
A FOLDER DESCRIBING TOPOGRAPHIC MAPS AND SYMBOLS IS AVAILABLE ON REQUEST

Revision shown in purple and woodland compiled from aerial photographs taken 1981 and other sources
Partial field check by U.S. Forest Service. Map edited 1984

CRICKET FLAT, OREG.
45117-E7-TF-024
1964
PHOTOREVISED 1984
DMA 2475 III SE-SERIES V892

Application No. Permit No.



Application No. _____
Permit No. _____

Mapped, edited, and published by the Geological Survey

Control by USGS and NOS/NOAA

Topography by photogrammetric methods from aerial photographs taken 1959. Field checked 1964

Polyconic projection. 1927 North American Datum

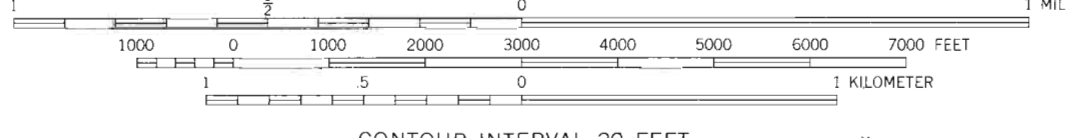
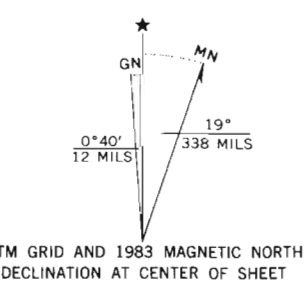
10,000-foot grid based on Oregon coordinate system, north zone

1000-meter Universal Transverse Mercator grid ticks, zone 11, shown in blue

Where omitted, land lines have not been established

Fine red dashed lines indicate selected fence lines

To place on the predicted North American Datum 1983 move the projection lines 17 meters north and 81 meters east as shown by dashed corner ticks



CONTOUR INTERVAL 20 FEET
CONTOUR INTERVAL ON RIVER SURFACE 10 FEET
NATIONAL GEODETIC VERTICAL DATUM OF 1929

CERTIFICATE NO. 70086



ROAD CLASSIFICATION
Light-duty _____ Unimproved dirt _____

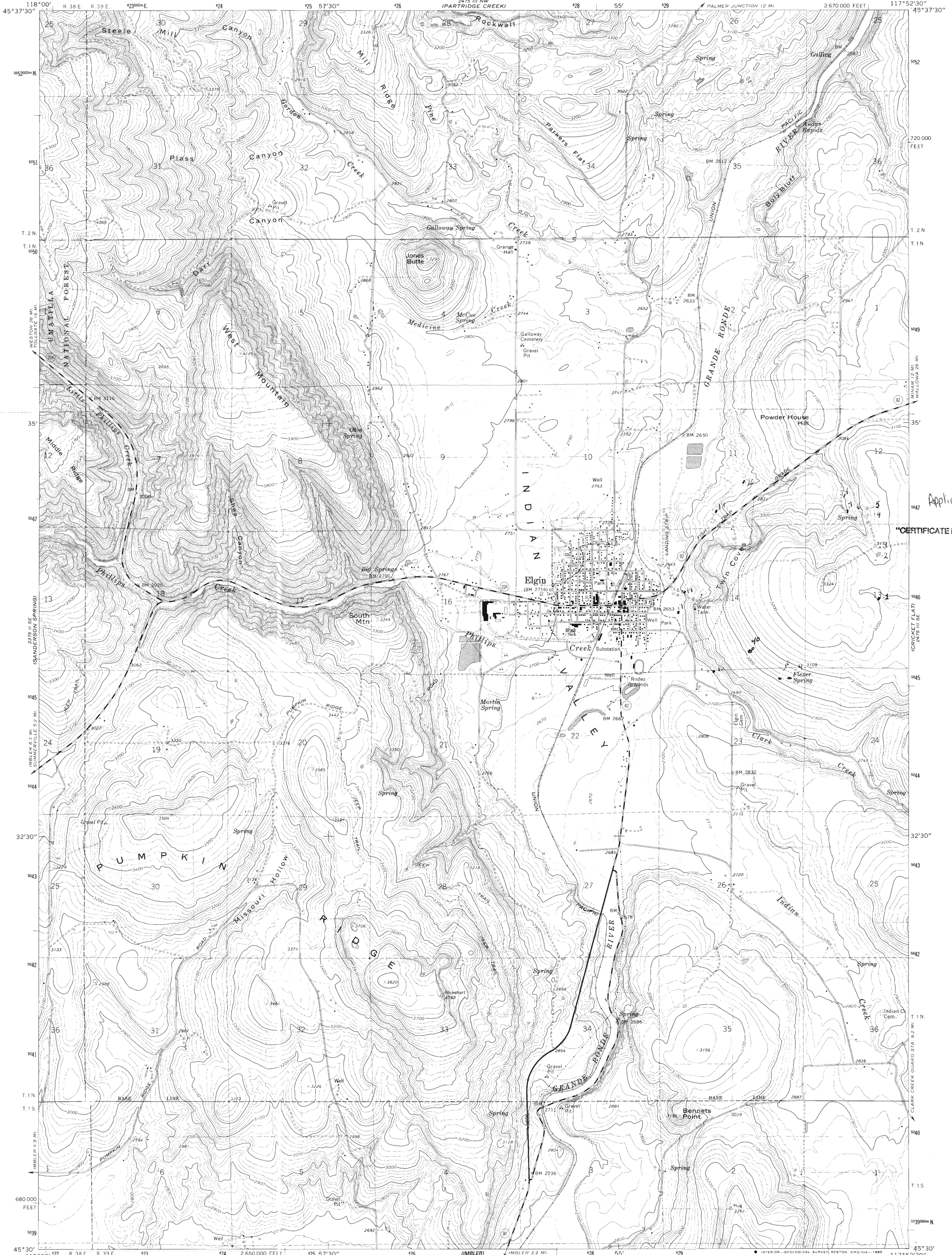
THIS MAP COMPLIES WITH NATIONAL MAP ACCURACY STANDARDS
FOR SALE BY U. S. GEOLOGICAL SURVEY, DENVER, COLORADO 80225, OR RESTON, VIRGINIA 22092
A FOLDER DESCRIBING TOPOGRAPHIC MAPS AND SYMBOLS IS AVAILABLE ON REQUEST

Revisions shown in purple and woodland compiled from aerial photographs taken 1981 and other source data
Partial field check by U. S. Forest Service. Map edited 1983

PARTRIDGE CREEK, OREG.

45117-FB-TF-024

1964
PHOTOREVISED 1983
DMA 2475 III NW—SERIES 8982



Application # R716100

CERTIFICATE NO. 70086

Mapped, edited, and published by the Geological Survey

Control by USGS and NOS/NOAA

Topography by photogrammetric methods from aerial photographs taken 1959. Field checked 1964

Polyconic projection. 1927 North American Datum

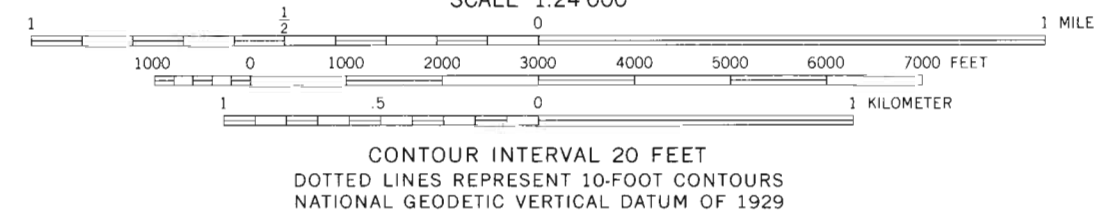
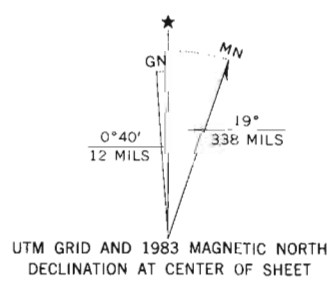
10,000-foot grid based on Oregon coordinate system, north zone

1000-meter Universal Transverse Mercator grid ticks, zone 11, shown in blue

Fine red dashed lines indicate selected fence lines

To place on the predicted North American Datum 1983 move the projection lines 17 meters north and 81 meters east as shown by dashed corner ticks

There may be private inholdings within the boundaries of the National or State reservations shown on this map



ROAD CLASSIFICATION

Heavy-duty	Light-duty
Medium-duty	Unimproved dirt
○ State Route	

Application No. R 76100
Permit No.

THIS MAP COMPLIES WITH NATIONAL MAP ACCURACY STANDARDS
FOR SALE BY U. S. GEOLOGICAL SURVEY, DENVER, COLORADO 80225, OR RESTON, VIRGINIA 22092
A FOLDER DESCRIBING TOPOGRAPHIC MAPS AND SYMBOLS IS AVAILABLE ON REQUEST

Revisions shown in purple and woodland compiled from aerial photographs taken 1981 and other source data
Partial field check by U. S. Forest Service. Map edited 1983

ELGIN, OREG.
45117-E8-TF-024
1964
PHOTOREVISED 1983
DMA 2475 III SW-SERIES V892