

NAT

MINAM 4.4 MI.
WALLOWA 1.8 MI.



5046
(MINAM)
2475 11 SW

5045

5044

32'30"

5043

5042

5041

T. 1 N

R. 3 E

Application No. R-76181
Parcel No.

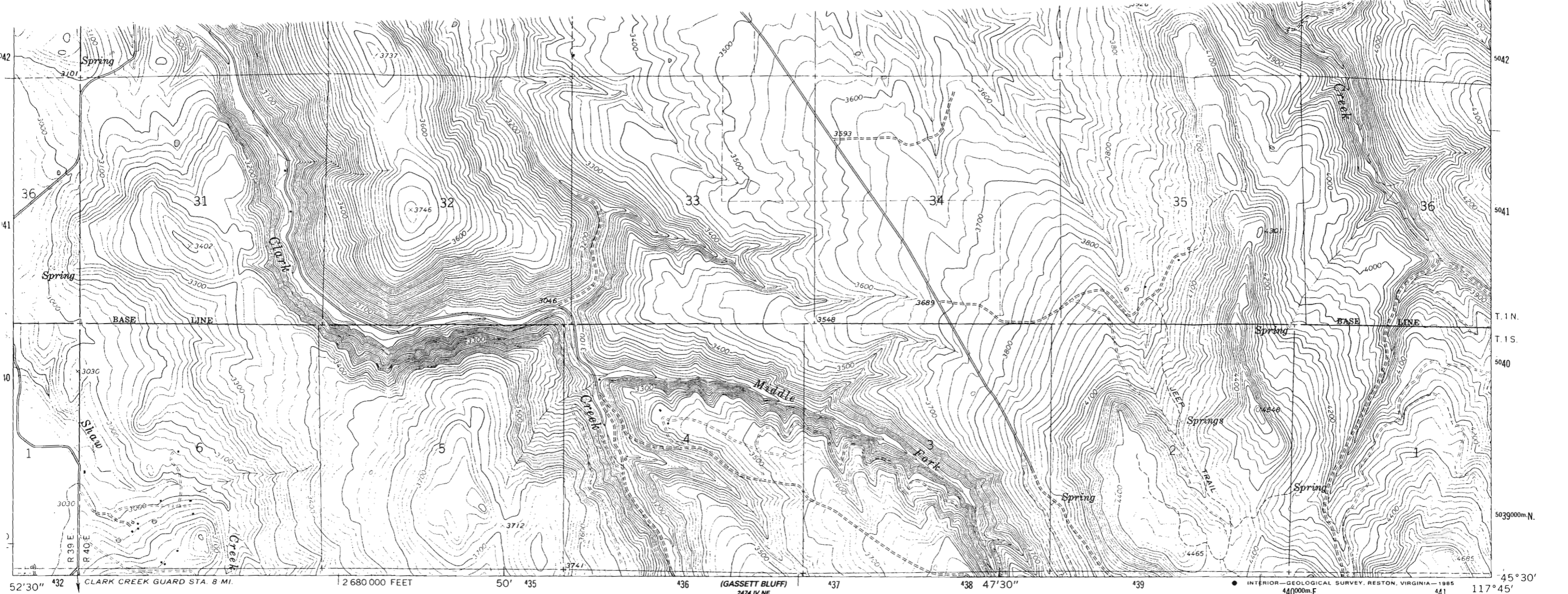
70087

"CERTIFICATE NO."

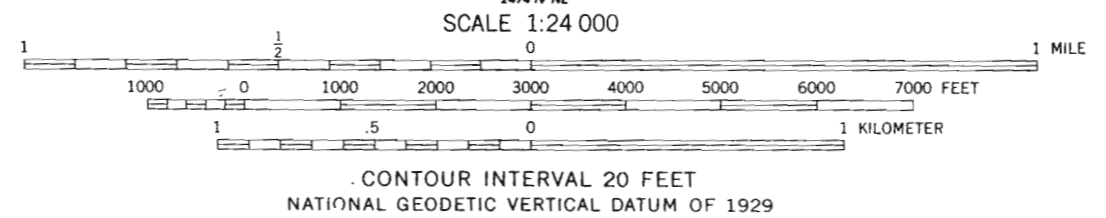
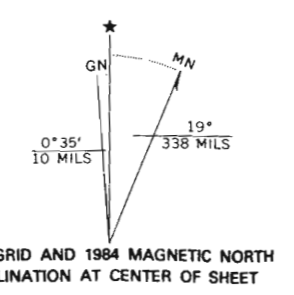
BASE LINE

BASE LINE

Spring



Mapped, edited, and published by the Geological Survey
 Control by USGS and NOS/NOAA
 Topography by photogrammetric methods from aerial photographs taken 1959. Field checked 1964
 Polyconic projection. 1927 North American datum
 10,000-foot grid based on Oregon coordinate system, north zone
 1000-meter Universal Transverse Mercator grid ticks, zone 11, shown in blue
 To place on the predicted North American Datum 1983 move the projection lines 17 meters north and 80 meters east as shown by dashed corner ticks
 Fine red dashed lines indicate selected fence lines



ROAD CLASSIFICATION
 Medium-duty ——— Light-duty ———
 Unimproved dirt = = = = =
 State Route ○

THIS MAP COMPLIES WITH NATIONAL MAP ACCURACY STANDARDS
 FOR SALE BY U. S. GEOLOGICAL SURVEY, DENVER, COLORADO 80225, OR RESTON, VIRGINIA
 A FOLDER DESCRIBING TOPOGRAPHIC MAPS AND SYMBOLS IS AVAILABLE ON REQUEST

Revision shown in purple and woodland compiled from aerial photographs taken 1981 and other sources.
 Partial field check by U.S. Forest Service. Map edited 1984

CRICKET FLAT, OREG.
 45117-E7-TF-024
 1964
 PHOTOREVISED 1984
 DMA 2475 III SE-SERIES V892

"CERTIFICATE NO. 70087"

Application No. R-76101
 Permit No.

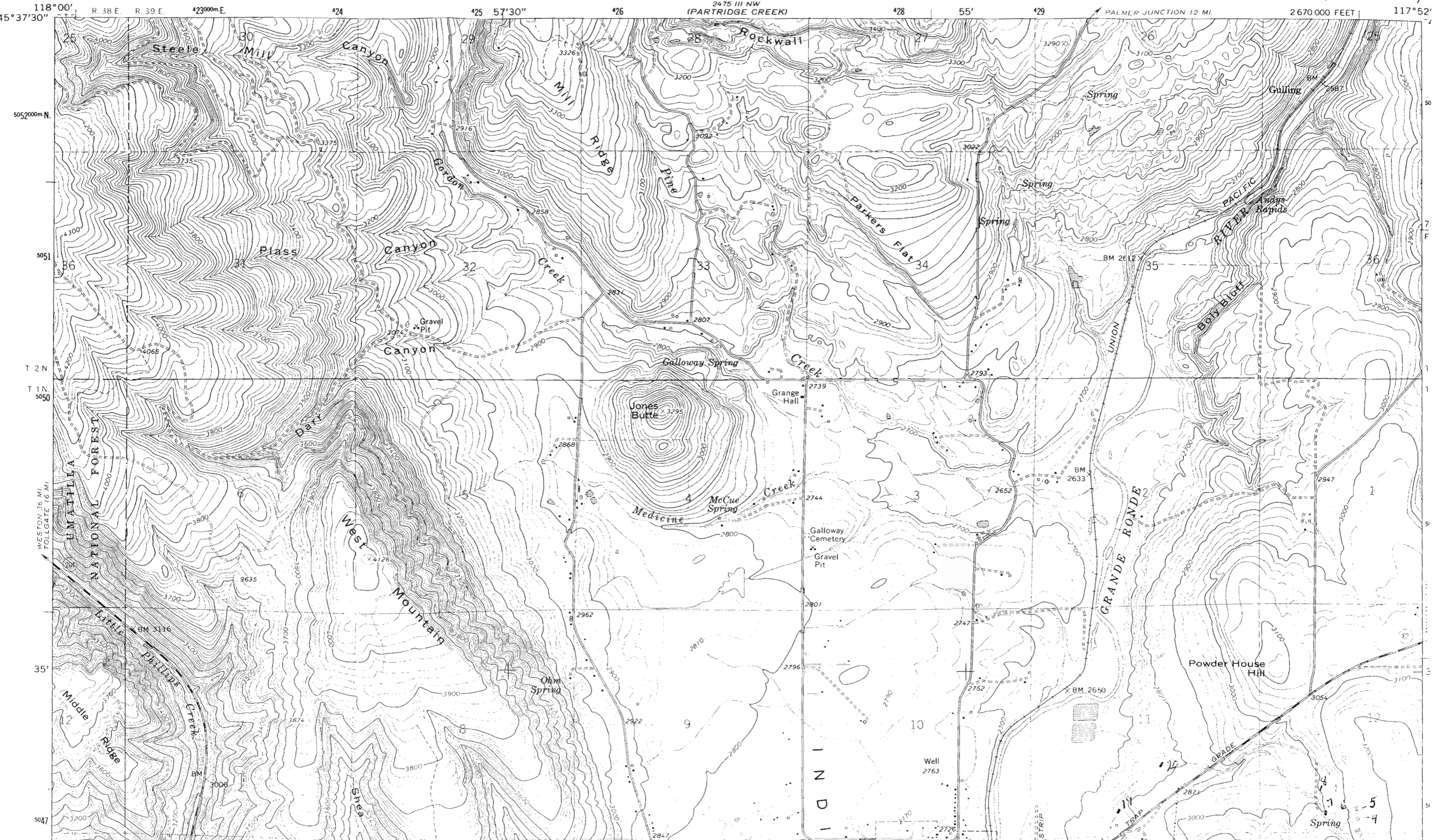
511 NE PRAIRIE

UNITED STATES
DEPARTMENT OF THE INTERIOR
GEOLOGICAL SURVEY

"CERTIFICATE NO. 70087

Application No. *R-76101*
Permit No.

ELGIN QUADRANGLE
OREGON-UNION CO.
7.5 MINUTE SERIES (TOPOGRAPHIC)



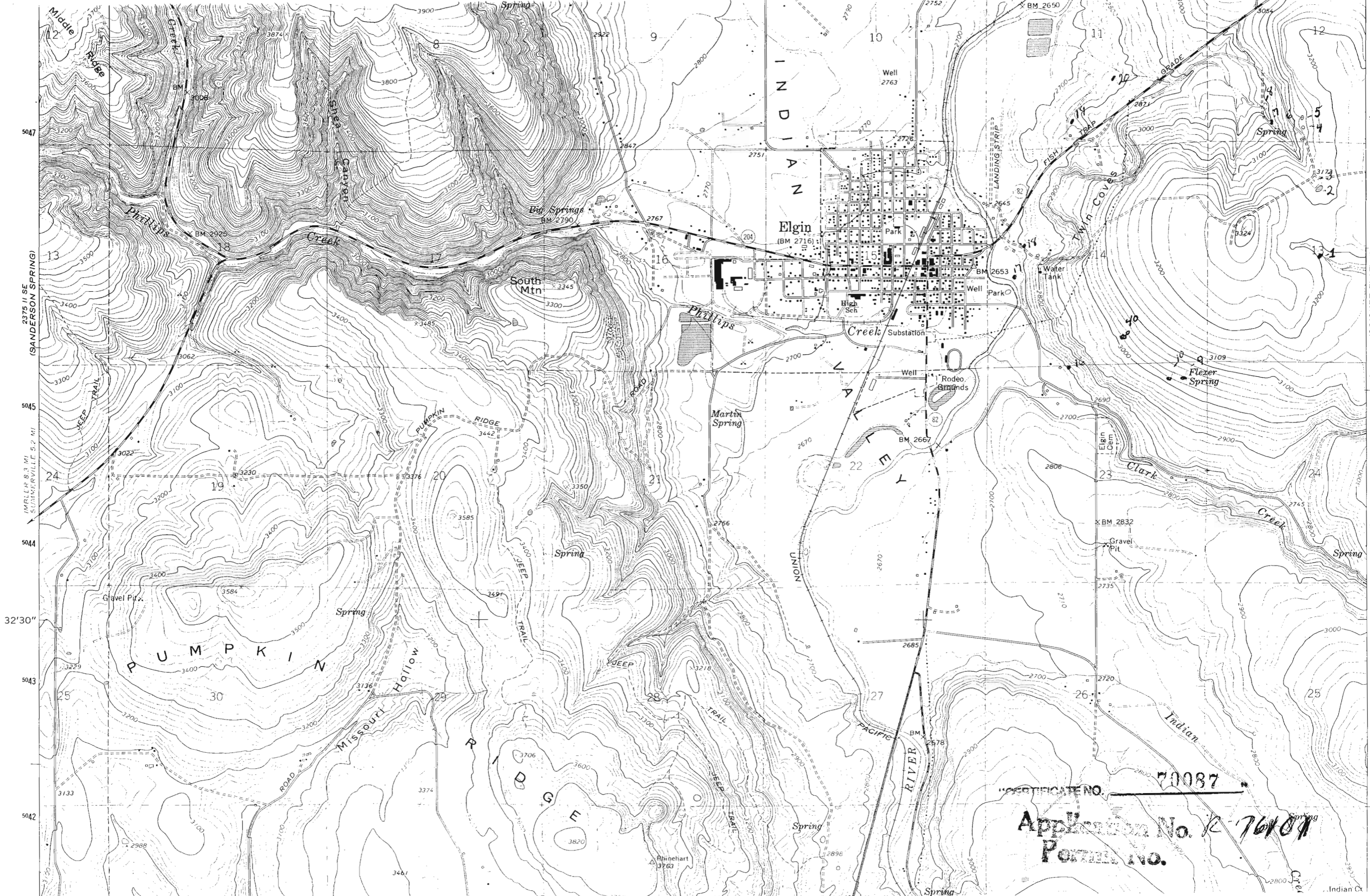
118°00'
15°37'30"
5052000m.N.
5051
T 2 N.
T 1 N.
5050
35'
5047

R. 38 E. R. 39 E. 423000m.E. 424 425 57'30" 426 2475 III NW (PARTRIDGE CREEK) 428 55' 429 PALMER JUNCTION 12 MI. 2670000 FEET 117°52'

WESTON 36 MI.
TOLLGATE 16 MI.
UMATILLA NATIONAL FOREST

INDIAN STRIP

Spring



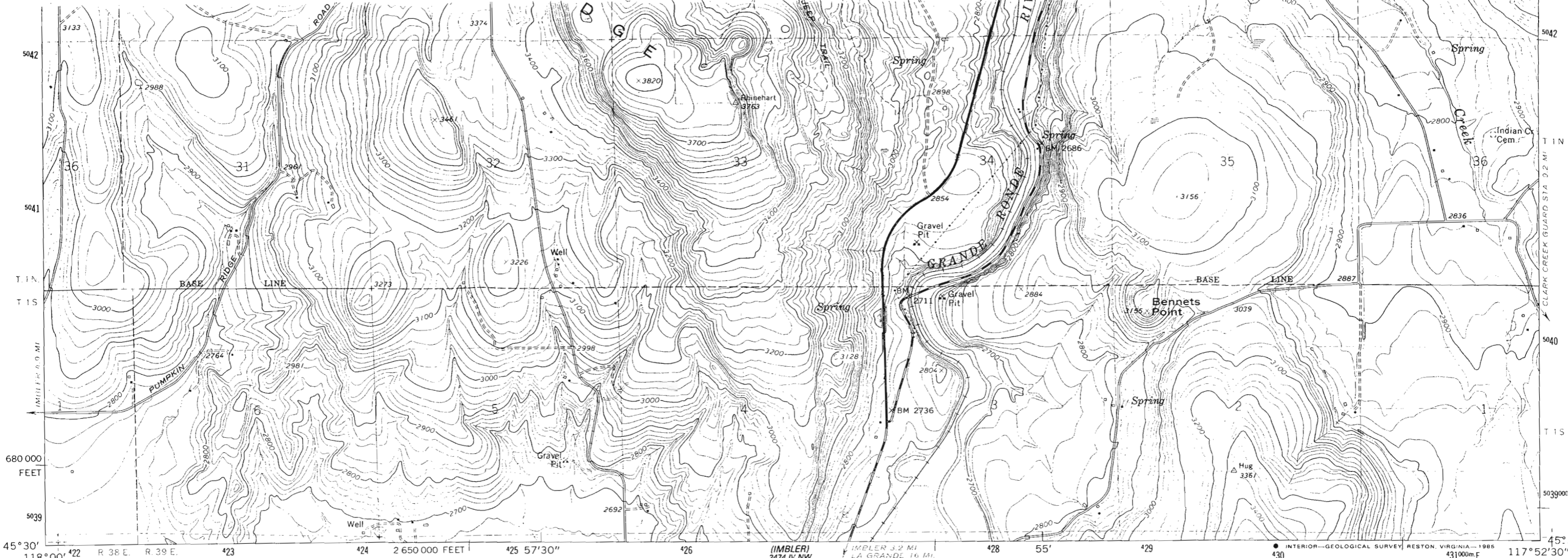
2375 11 SE (SANDERSON SPRING)
IMRLEP 8.3 MI SUMMERSVILLE 5.2 MI
32'30"

INDIAN

Elgin

PUMPKIN

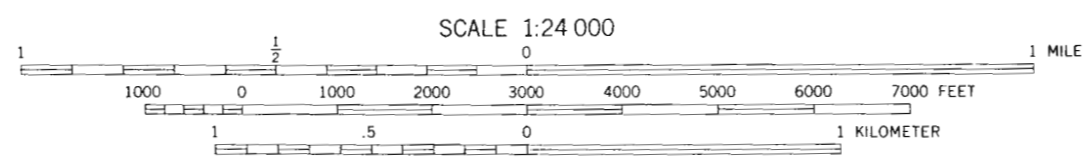
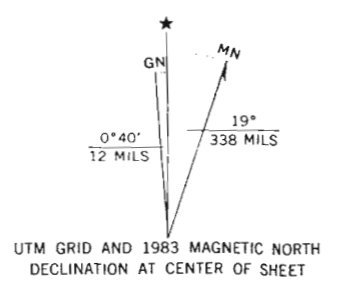
CERTIFICATE NO. 70087
Application No. R-76107
Form No.



Mapped, edited, and published by the Geological Survey
 Control by USGS and NOS/NOAA

Topography by photogrammetric methods from aerial photographs taken 1959. Field checked 1964
 Polyconic projection. 1927 North American Datum
 10,000-foot grid based on Oregon coordinate system, north zone
 1000-meter Universal Transverse Mercator grid ticks, zone 11, shown in blue
 Fine red dashed lines indicate selected fence lines

To place on the predicted North American Datum 1983 move the projection lines 17 meters north and 81 meters east as shown by dashed corner ticks
 There may be private inholdings within the boundaries of the National or State reservations shown on this map



SCALE 1:24 000
 CONTOUR INTERVAL 20 FEET
 DOTTED LINES REPRESENT 10-FOOT CONTOURS
 NATIONAL GEODETIC VERTICAL DATUM OF 1929

THIS MAP COMPLIES WITH NATIONAL MAP ACCURACY STANDARDS
 FOR SALE BY U. S. GEOLOGICAL SURVEY, DENVER, COLORADO 80225, OR RESTON, VIRGINIA 22092
 A FOLDER DESCRIBING TOPOGRAPHIC MAPS AND SYMBOLS IS AVAILABLE ON REQUEST



Revisions shown in purple and woodland compiled from aerial photographs taken 1981 and other source data
 Partial field check by U. S. Forest Service. Map edited 1983

ROAD CLASSIFICATION

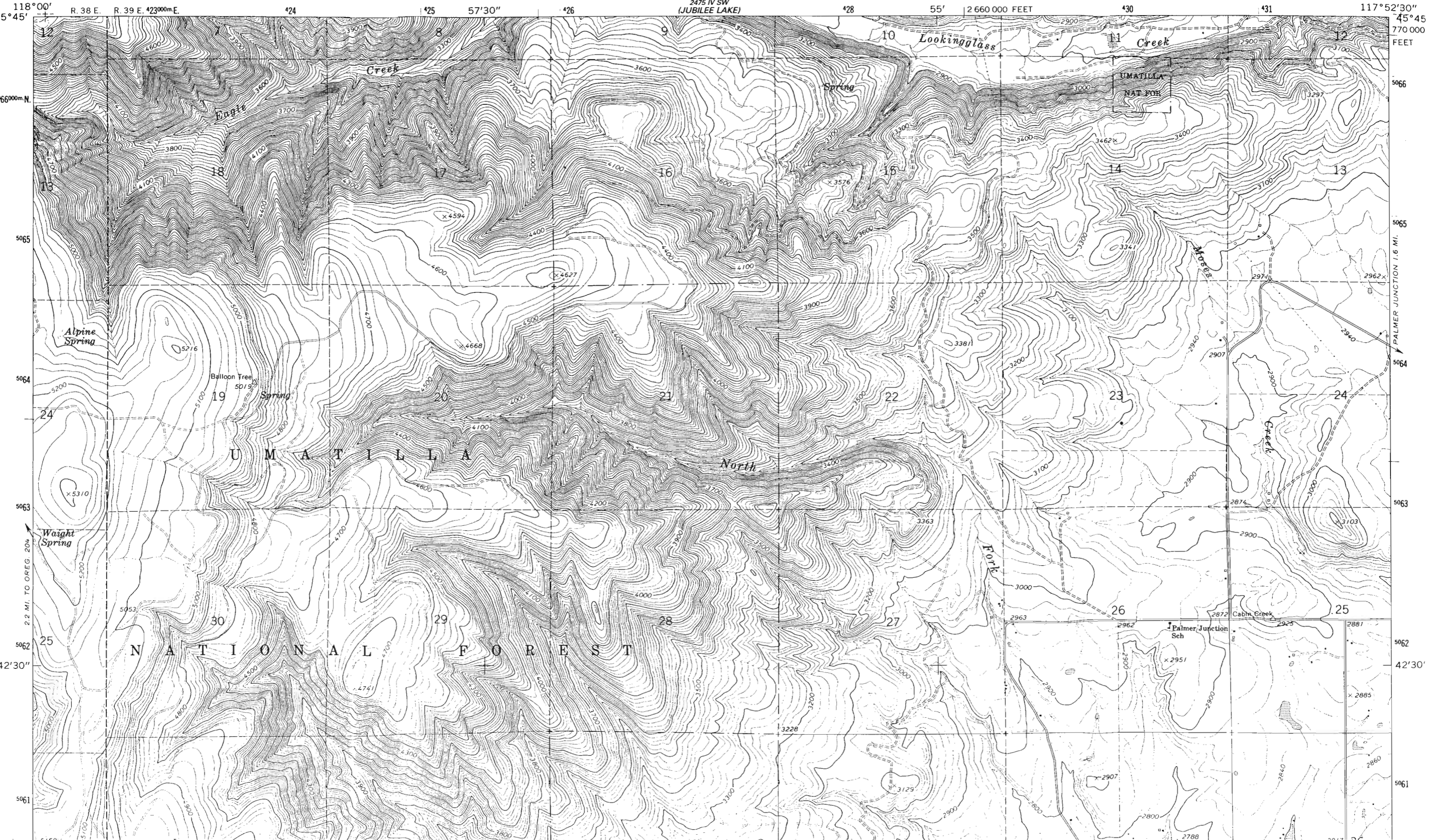
Heavy-duty		Light-duty	
Medium-duty		Unimproved dirt	
		State Route	

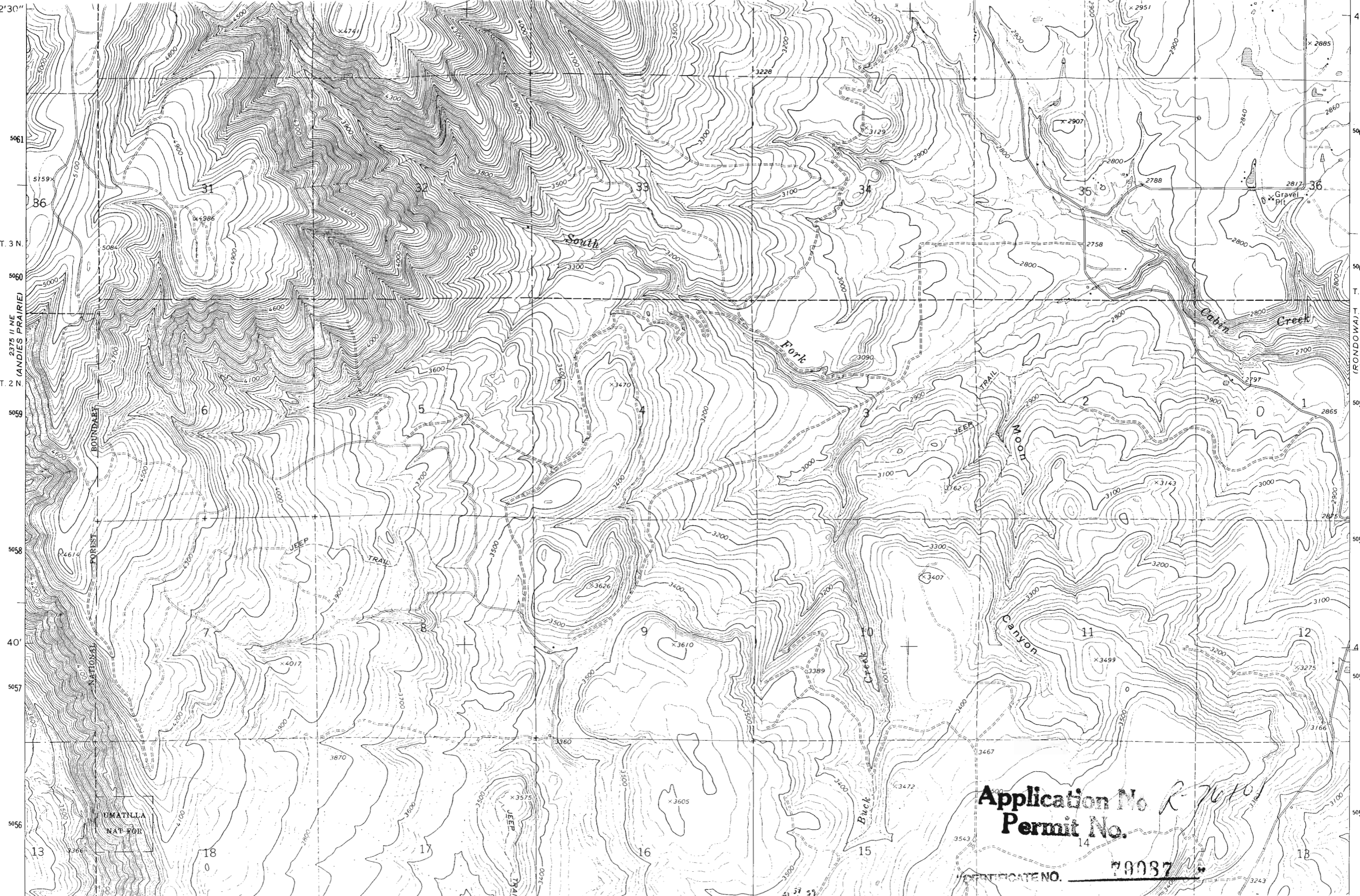
ELGIN, OREG.
 45117-E8-TF-024

1964
 PHOTOREVISED 1983
 DMA 2475 III SW-SERIES V892

Application No. R-76101
 Permit No.

VERIFICATION NO. 70087





2' 30"
5061
T. 3 N.
5060
T. 2 N.
5059
5058
40'
5057
5056

4
50
50
50
50
50
4
50
50

Application No. R-7670
Permit No.
14
79037
CERTIFICATE NO.

BOUNDARY
NATIONAL FOREST
UMATILLA NAT FOR

South

Fork

Cabin Creek

TRAIL
WOOD

Canyon

Buck Creek

TRAIL
JEEP

86

31

32

33

34

35

36

6

5

4

3

2

1

7

8

9

10

11

12

13

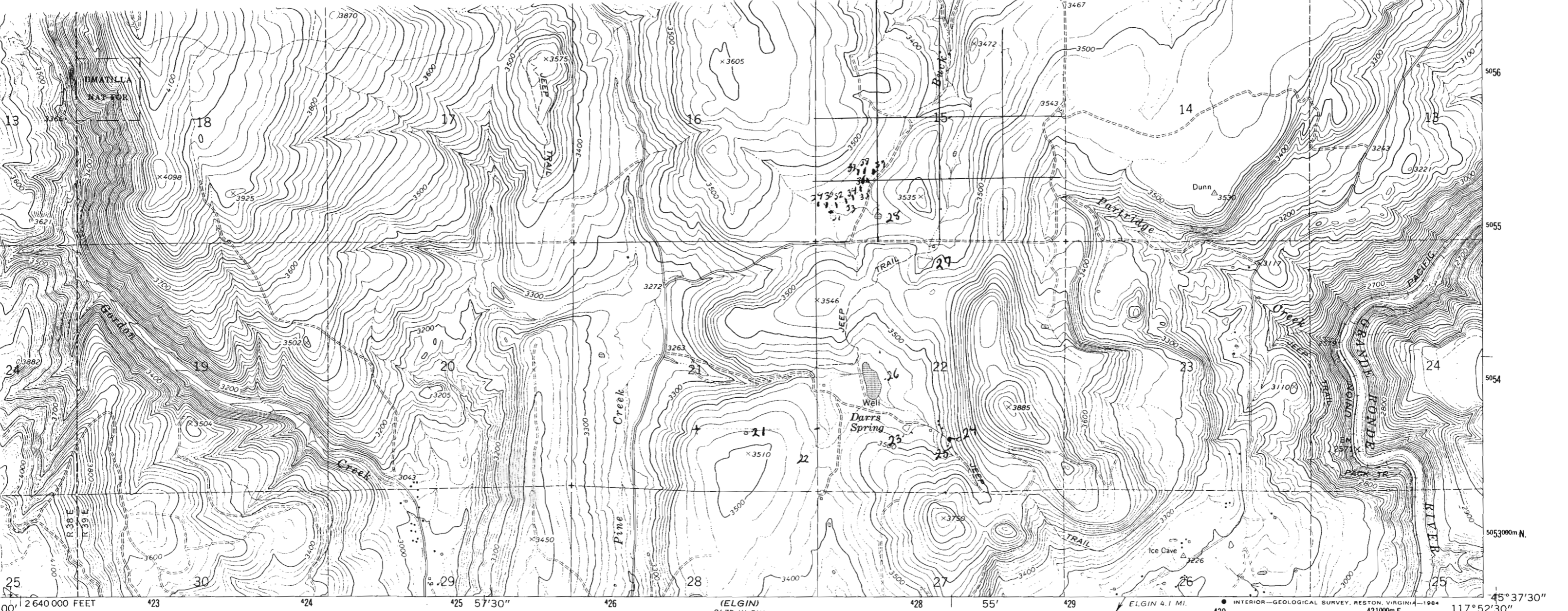
18

17

16

15

18



Mapped, edited, and published by the Geological Survey

Control by USGS and NOS/NOAA

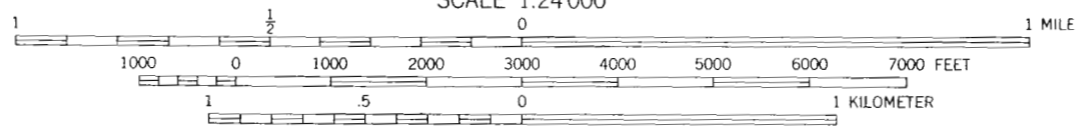
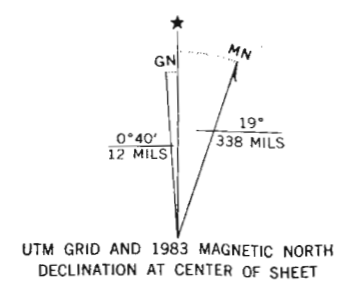
Topography by photogrammetric methods from aerial photographs taken 1959. Field checked 1964

Polyconic projection. 1927 North American Datum
 60,000-foot grid based on Oregon coordinate system, orth zone
 1000-meter Universal Transverse Mercator grid ticks, one 11, shown in blue

Where omitted, land lines have not been established
 Fine red dashed lines indicate selected fence lines

Do not place on the predicted North American Datum 1983
 Move the projection lines 17 meters north and 1 meters east as shown by dashed corner ticks

There may be private inholdings within the boundaries of the National or State reservations shown on this map



CONTOUR INTERVAL 20 FEET
 CONTOUR INTERVAL ON RIVER SURFACE 10 FEET
 NATIONAL GEODETIC VERTICAL DATUM OF 1929



QUADRANGLE LOCATION

ROAD CLASSIFICATION
 Light-duty Unimproved dirt

THIS MAP COMPLIES WITH NATIONAL MAP ACCURACY STANDARDS
 FOR SALE BY U. S. GEOLOGICAL SURVEY, DENVER, COLORADO 80225, OR RESTON, VIRGINIA 22092
 A FOLDER DESCRIBING TOPOGRAPHIC MAPS AND SYMBOLS IS AVAILABLE ON REQUEST

Revisions shown in purple and woodland compiled from aerial photographs taken 1981 and other source data
 Partial field check by U. S. Forest Service. Map edited 1983

PARTRIDGE CREEK, OREG.
 45117-F8-TF-024

1964
 PHOTOREVISED 1983
 DMA 2475 III NW—SERIES V892

IDENTIFICATION NUMBER 70087

Application No. R-76101
 Permit No.

CRICKET FLA.
 2475 III SE