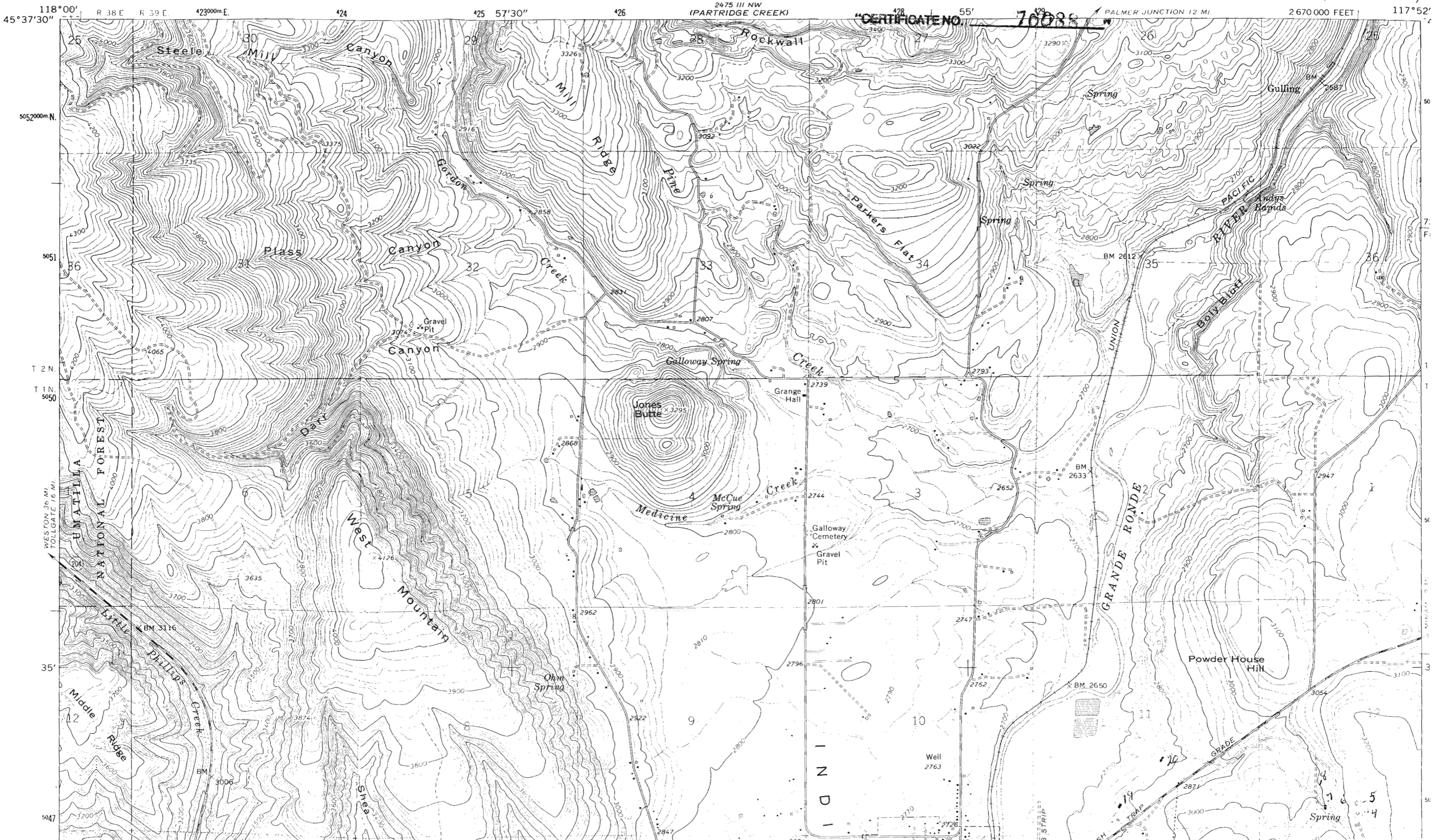


7.5 MINUTE
SERIES (PRAIRIE)

UNITED STATES
DEPARTMENT OF THE INTERIOR
GEOLOGICAL SURVEY

Application No. R-76102
Permit No.

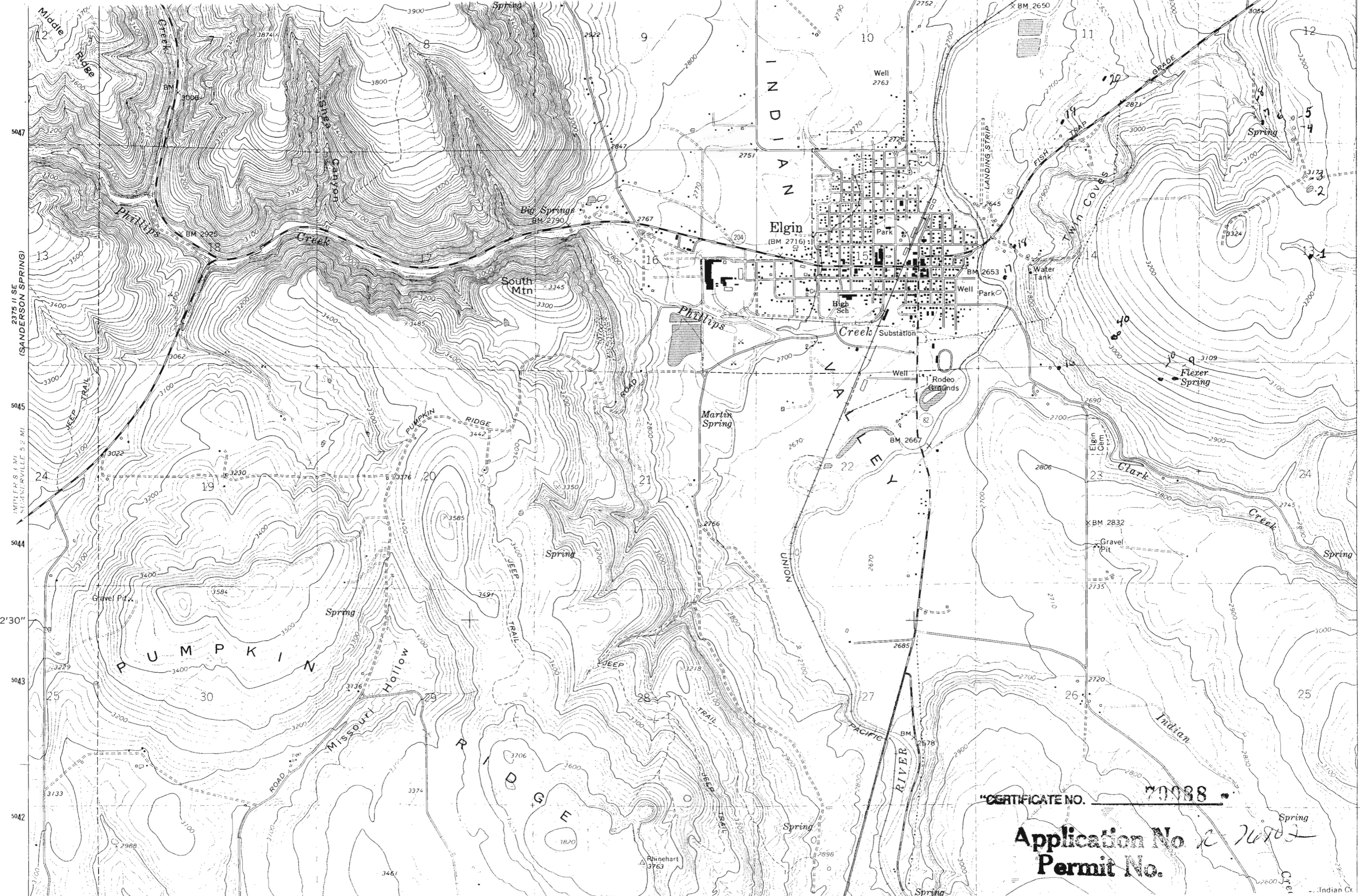
ELGIN QUADRANGLE
OREGON-UNION CO.
7.5 MINUTE SERIES (TOPOGRAPHIC)



118°00'
45°37'30"
505 2000m N.
5051
T 2 N.
T 1 N.
5050
WESTON 36 MI.
TOLLGATE 16 MI.
35'
5047

2475 III NW (PARTRIDGE CREEK)
"CERTIFICATE NO. 76088"
PALMER JUNCTION 12 MI.
2670 000 FEET
117°52'

INDIAN
WELL 2763
TRAP



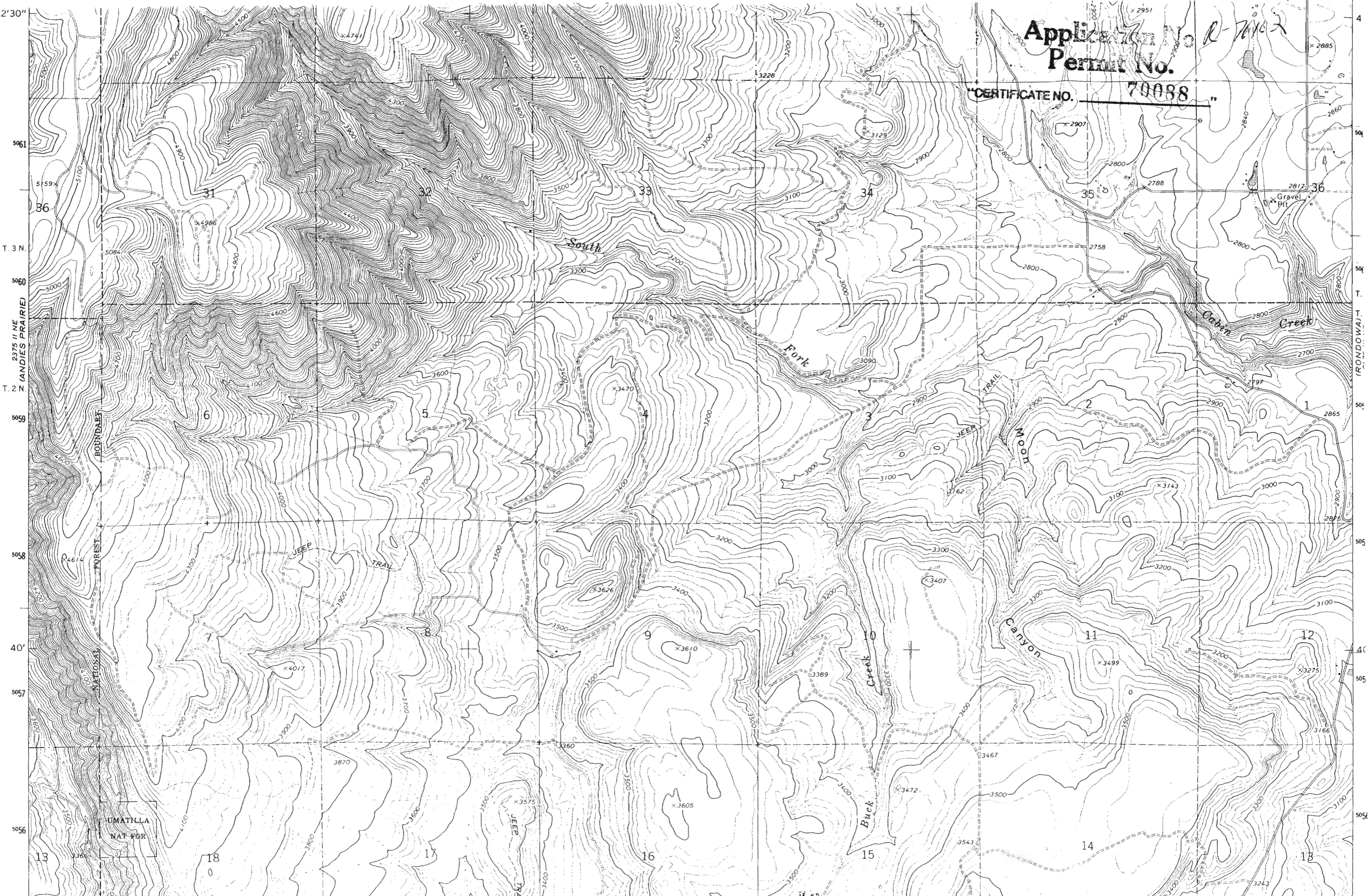
CERTIFICATE NO. 70088

Application No. *20702*
Permit No.

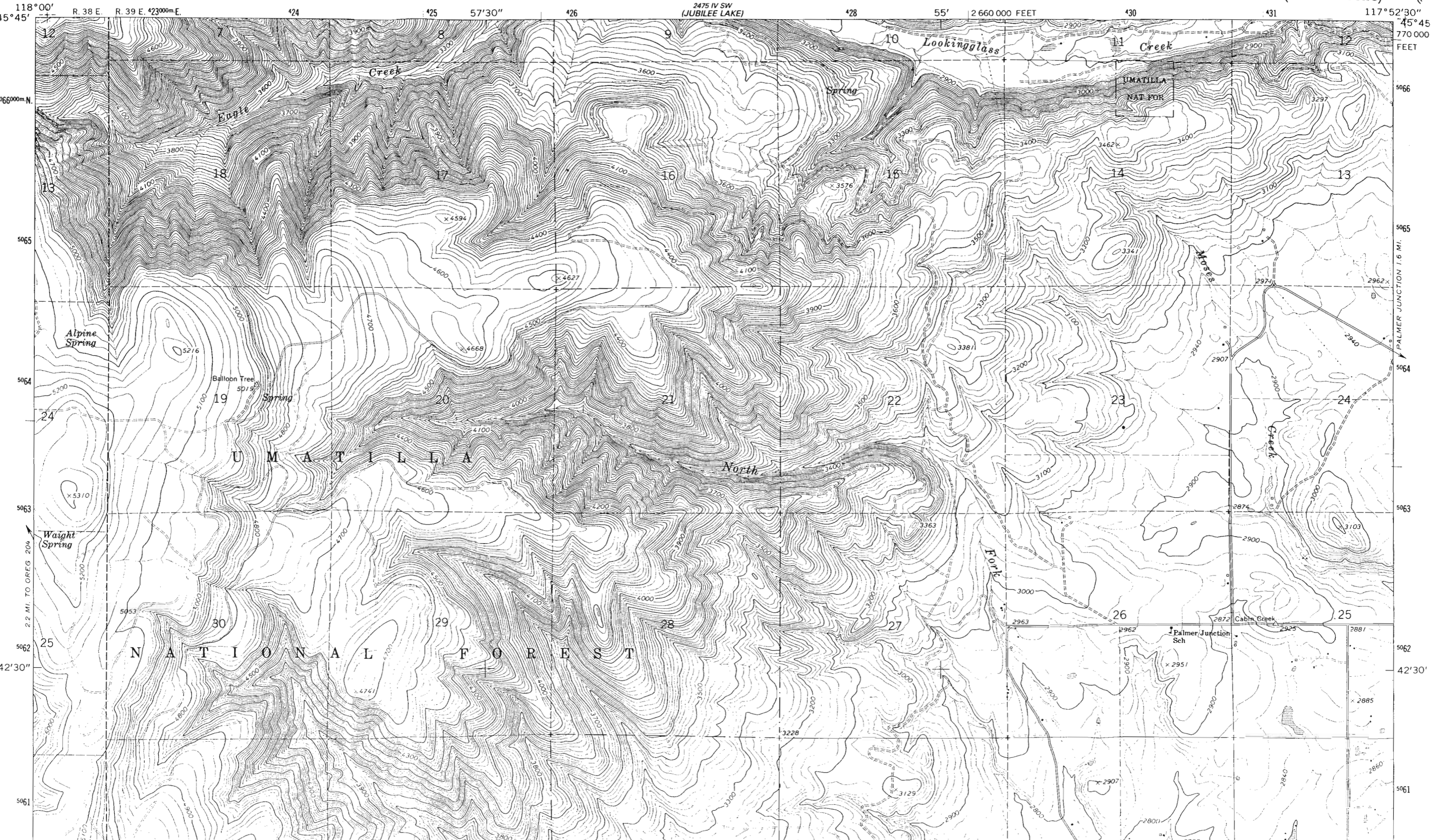
2' 30"
5061
T. 3 N.
5060
2375 II NE (ANDIES PRAIRIE)
T. 2 N.
5059
5058
40'
5057
5056

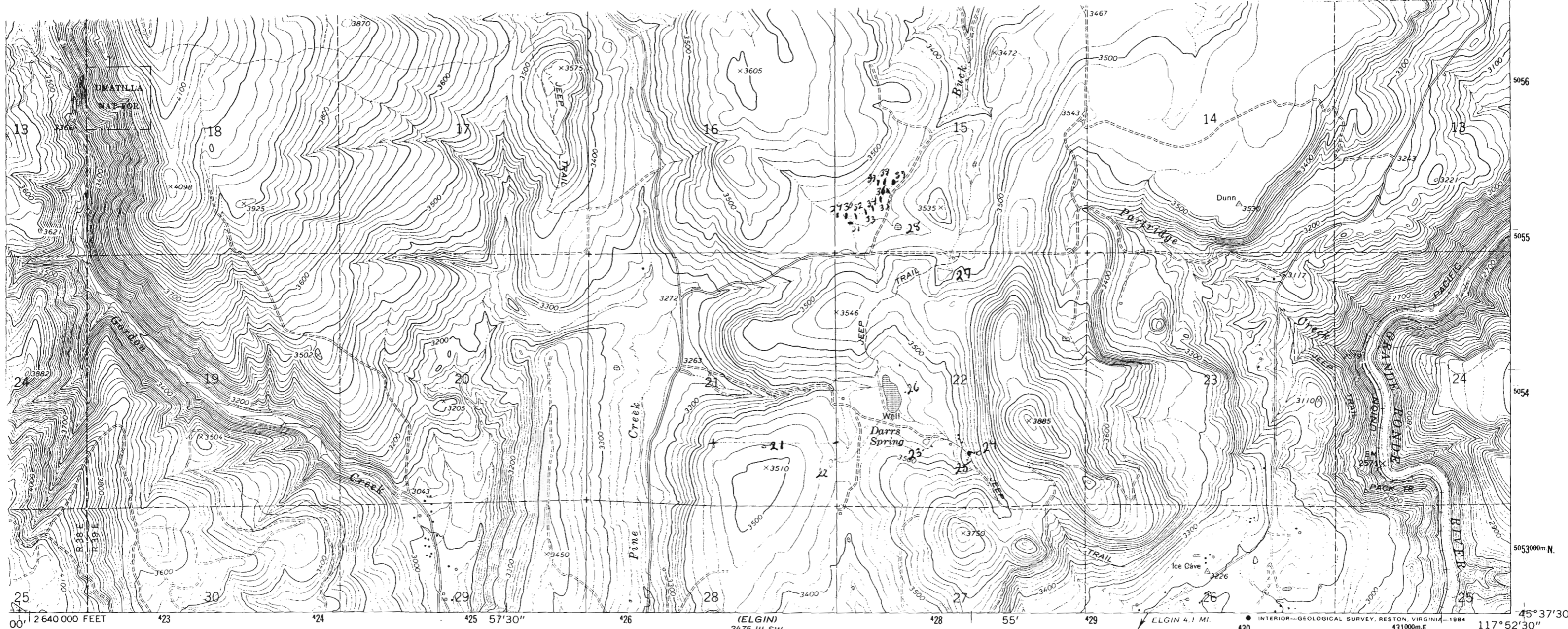
Application No. R-7402
Permit No.

CERTIFICATE NO. 70088

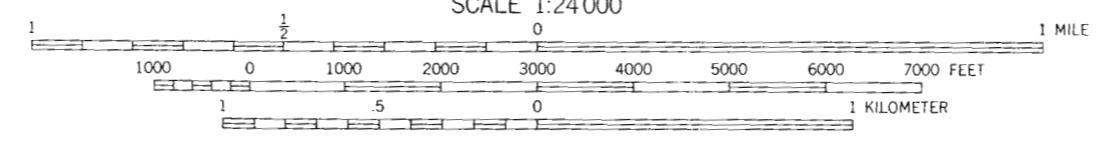
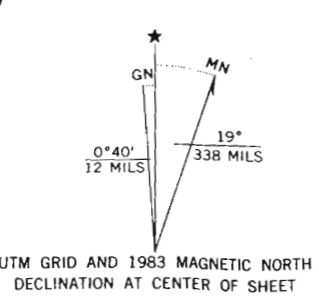


4
504
T.
504
T.
504
T.
505
505
40'
505
5056





Mapped, edited, and published by the Geological Survey
 Control by USGS and NOS/NOAA
 Topography by photogrammetric methods from aerial photographs taken 1959. Field checked 1964
 Polyconic projection. 1927 North American Datum
 60,000-foot grid based on Oregon coordinate system, north zone
 1000-meter Universal Transverse Mercator grid ticks, zone 11, shown in blue
 Where omitted, land lines have not been established
 Fine red dashed lines indicate selected fence lines
 To place on the predicted North American Datum 1983 move the projection lines 17 meters north and 11 meters east as shown by dashed corner ticks



CONTOUR INTERVAL 20 FEET
 CONTOUR INTERVAL ON RIVER SURFACE 10 FEET
 NATIONAL GEODETIC VERTICAL DATUM OF 1929



ROAD CLASSIFICATION
 Light-duty Unimproved dirt

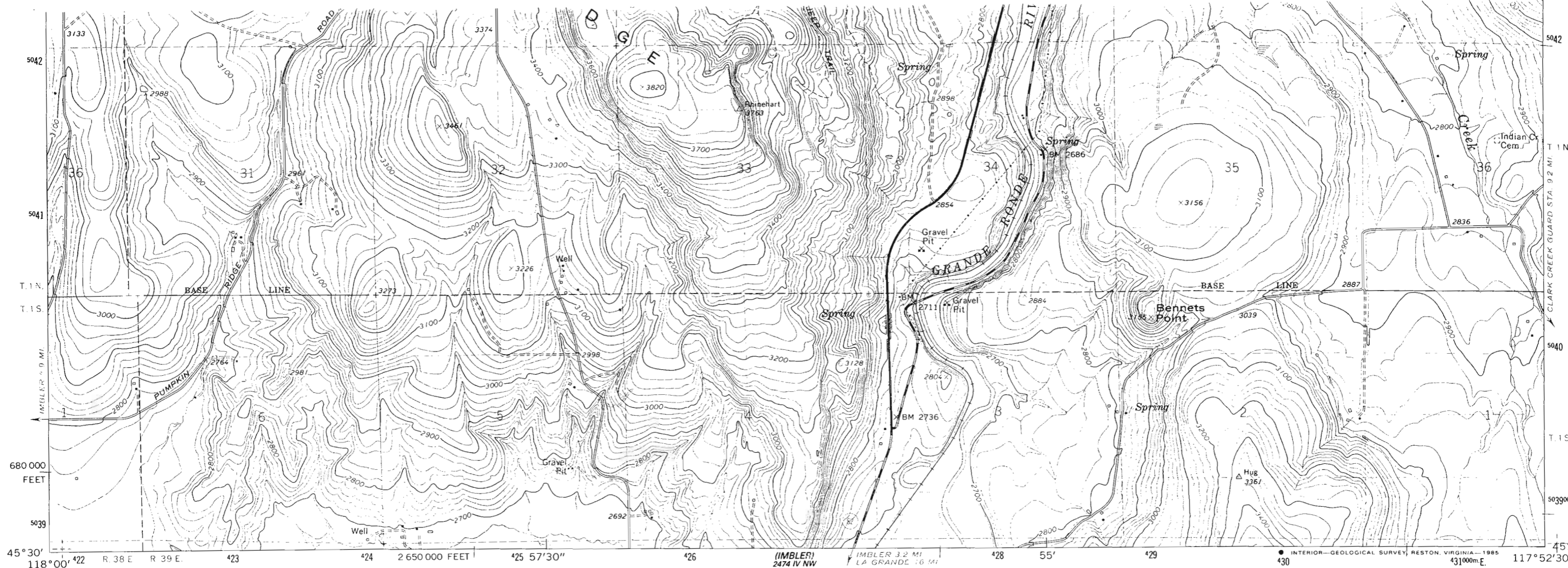
THIS MAP COMPLIES WITH NATIONAL MAP ACCURACY STANDARDS
 FOR SALE BY U. S. GEOLOGICAL SURVEY, DENVER, COLORADO 80225, OR RESTON, VIRGINIA 22092
 A FOLDER DESCRIBING TOPOGRAPHIC MAPS AND SYMBOLS IS AVAILABLE ON REQUEST

Revisions shown in purple and woodland compiled from aerial photographs taken 1981 and other source data
 Partial field check by U. S. Forest Service. Map edited 1983

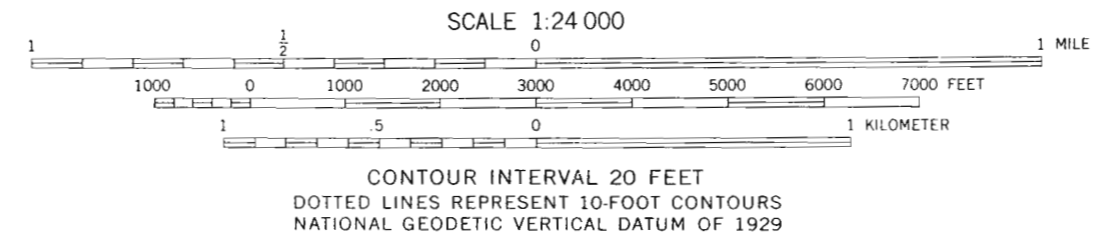
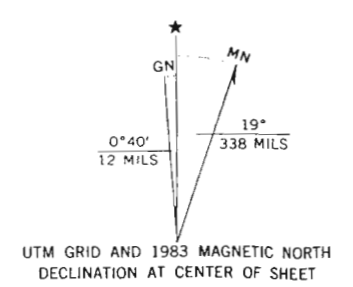
PARTRIDGE CREEK, OREG.
 45117-F8-TF-024
 1964
 PHOTOREVISED 1983
 DMA 2475 III NW—SERIES V892

Application No. R-76102
 Permit No.

CERTIFICATE NO. 70088



Mapped, edited, and published by the Geological Survey
 Control by USGS and NOS/NOAA
 Topography by photogrammetric methods from aerial photographs taken 1959. Field checked 1964
 Polyconic projection. 1927 North American Datum
 10,000-foot grid based on Oregon coordinate system, north zone
 1000-meter Universal Transverse Mercator grid ticks, zone 11, shown in blue
 Fine red dashed lines indicate selected fence lines
 To place on the predicted North American Datum 1983 move the projection lines 17 meters north and 81 meters east as shown by dashed corner ticks
 There may be private inholdings within the boundaries of the National or State reservations shown on this map



ROAD CLASSIFICATION

Heavy-duty	—————	Light-duty	-----
Medium-duty	-----	Unimproved dirt	-----
		State Route	○

QUADRANGLE LOCATION

OREGON

THIS MAP COMPLIES WITH NATIONAL MAP ACCURACY STANDARDS
 FOR SALE BY U. S. GEOLOGICAL SURVEY, DENVER, COLORADO 80225, OR RESTON, VIRGINIA 22092
 A FOLDER DESCRIBING TOPOGRAPHIC MAPS AND SYMBOLS IS AVAILABLE ON REQUEST

Revisions shown in purple and woodland compiled from aerial photographs taken 1981 and other source data
 Partial field check by U. S. Forest Service. Map edited 1983

ELGIN, OREG.
 45117-E8-TF-024
 1964
 PHOTOREVISED 1983
 DMA 2475 III SW-SERIES V892

Application No. *R-76102*
 Permit No.

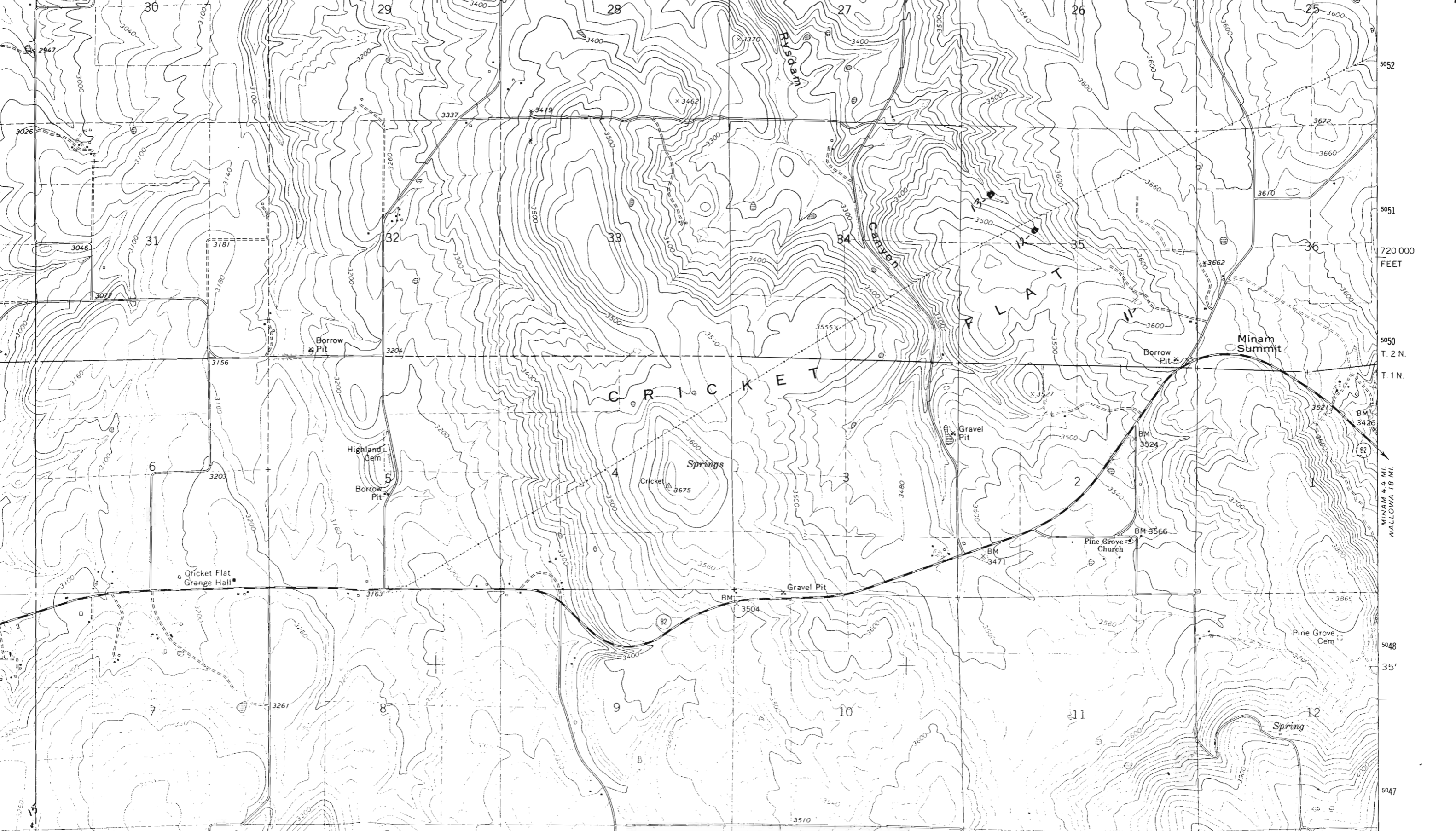
CERTIFICATE NO. 70088

Application No. *R 70102*
Permit No.
"CERTIFICATE NO. 70038"

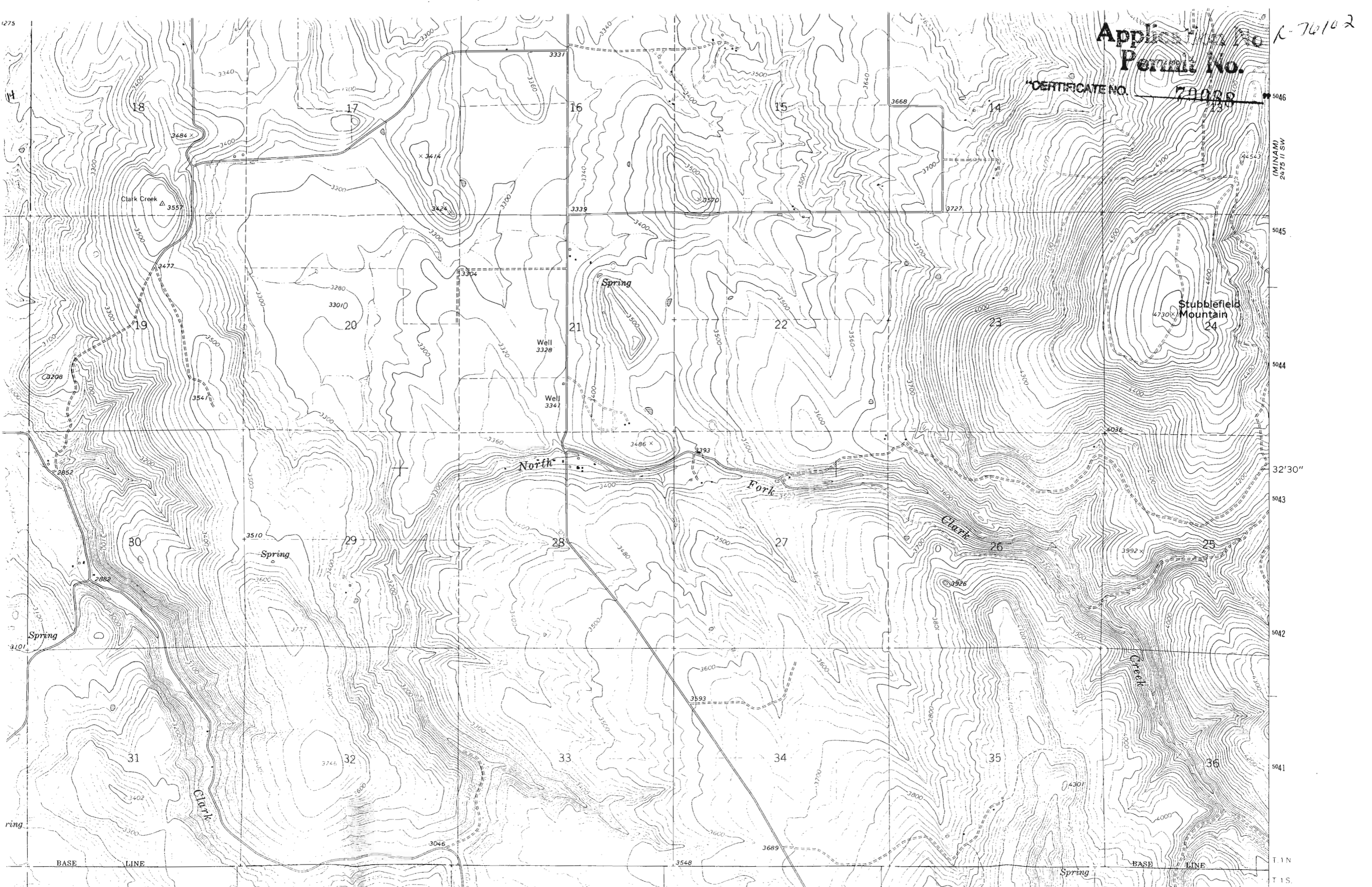
CRICKET FLAT QUADRANGLE
OREGON—UNION CO.
7.5 MINUTE SERIES (TOPOGRAPHIC)

2475 11 NW
(HOWARD BUTTE)

39 E. R. 40 E. 433000m E. 434 50' PALMER JUNCTION 9.4 MI. 2475 11 NE (RONDOWA) 437 438 47'30" 439 440 PALMER JUNCTION 8.4 MI. 2700 000 FEET 441 117°45' 45°37'30" NA



5052
5051
720 000
FEET
5050
T. 2 N.
T. 1 N.
5048
35'
5047



Application No. K-76102
Permit No.

CERTIFICATE NO. 78022

(MINAM)
2475 II SW

5046

5045

5044

5043

5042

32'30"

5041

5040

5039

5038

5037

5036

5035

5034

5033

5032

Stubblefield Mountain
4730'

Clark Creek
3557'

Spring

North Fork

Fork

Clark

Spring

Spring

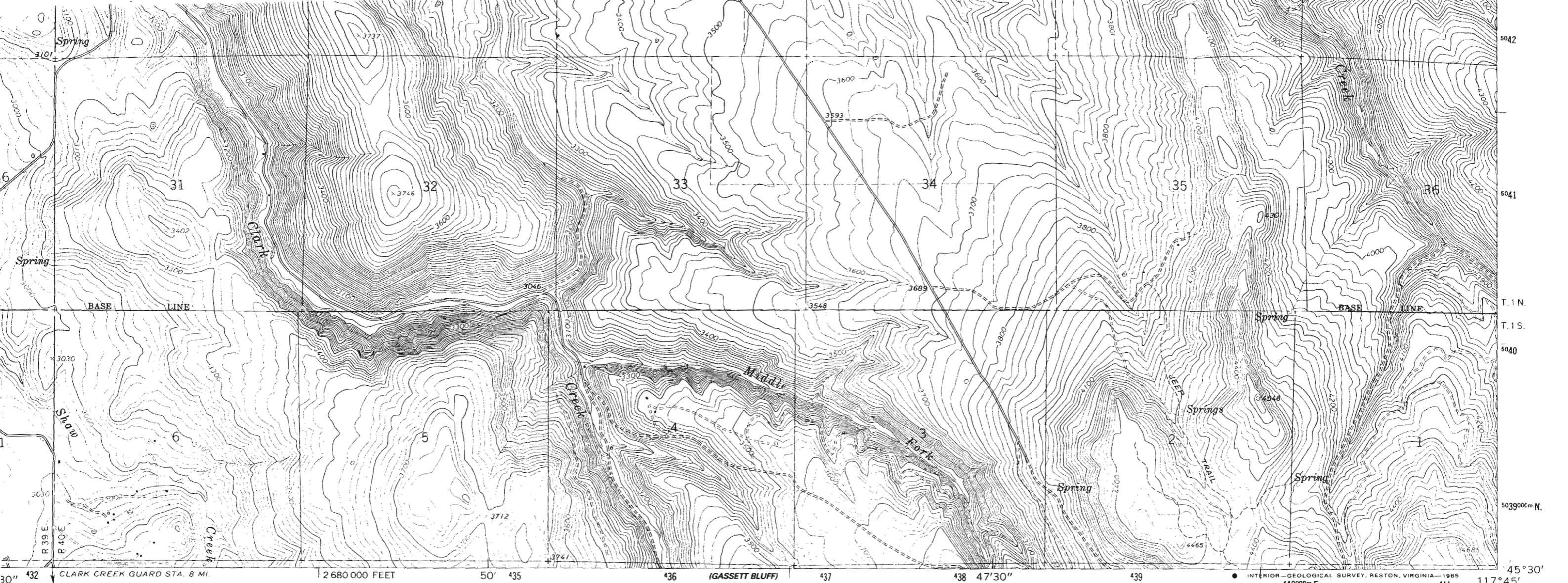
Spring

BASE LINE

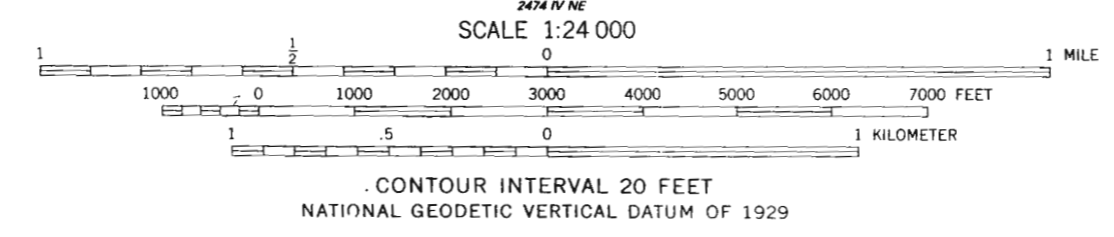
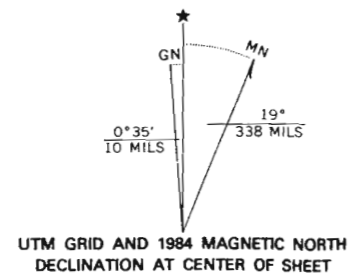
BASE LINE

T. 1 N

T. 1 S



pped, edited, and published by the Geological Survey
 ntrol by USGS and NOS/NOAA
 ography by photogrammetric methods from aerial
 tographs taken 1959. Field checked 1964
 onic projection. 1927 North American datum
 00-foot grid based on Oregon coordinate system,
 h zone
 0-meter Universal Transverse Mercator grid ticks,
 e 11, shown in blue
 lace on the predicted North American Datum 1983
 ve the projection lines 17 meters north and
 eters east as shown by dashed corner ticks
 a red dashed lines indicate selected fence lines



ROAD CLASSIFICATION

Medium-duty _____ Light-duty _____

Unimproved dirt =====

○ State Route

THIS MAP COMPLIES WITH NATIONAL MAP ACCURACY STANDARDS
 FOR SALE BY U. S. GEOLOGICAL SURVEY, DENVER, COLORADO 80225, OR RESTON, VIRGINIA
 A FOLDER DESCRIBING TOPOGRAPHIC MAPS AND SYMBOLS IS AVAILABLE ON REQUEST

Revision shown in purple and woodland compiled from
 aerial photographs taken 1981 and other sources
 Partial field check by U.S. Forest Service. Map edited 1984

CRICKET FLAT, OREG.
 45117-E7-TF-024

1964
 PHOTOREVISED 1984
 DMA 2475 III SE—SERIES V892

Application No. R-76102
 Permit No.

"CERTIFICATE NO. 70088"