

SECTION 36 T.25S. R.6W. W.M.
DOUGLAS COUNTY

Application No. R-76105
Permit No. 70091

25 6 36
& INDEX

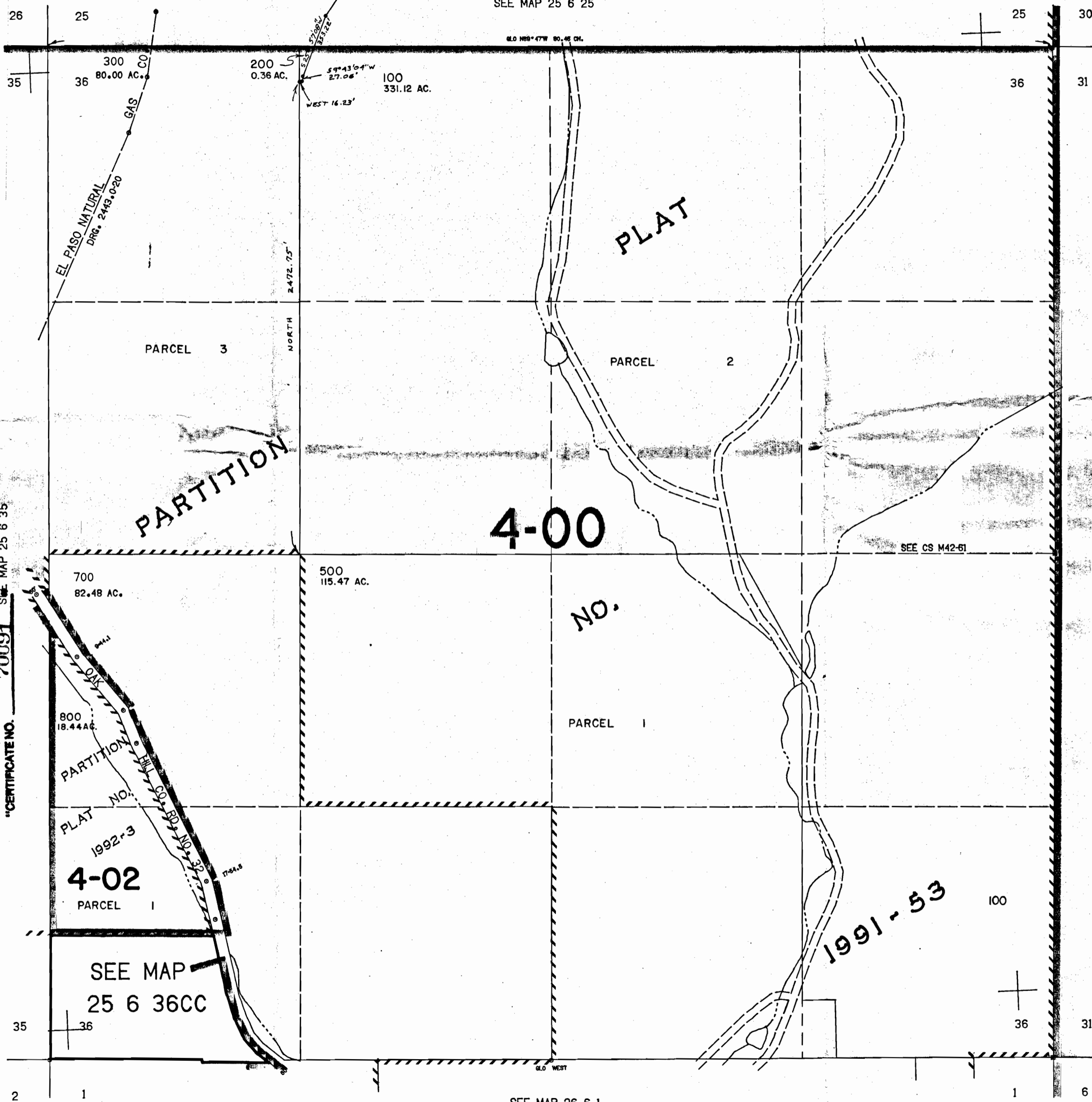
MAP WAS PREPARED FOR
ASSESSMENT PURPOSE ONLY.

1"=400'

"CERTIFICATE NO.

REVISED ON
1-13-92

SEE MAP 25 6 25



CANCELLED NOS
201
400
501
600
601

SEE MAP 25 5 31

SEE CS M42-61

RECEIVED
DEC 28 1994
WATER RESOURCES DIV.
SALEM, OREGON 97330-625.000

SEE MAP 26 6 1

25 6 36
& INDEX

R-76105
"CERTIFICATE NO. 70091
SEE MAP 25 6 35

PARTITION

PLAT

4-00

NO.

1991-53

4-02
PARCEL 1

SEE MAP
25 6 36CC

