

RECEIVED

DEC 28 1994

WATER RESOURCES DEP.  
SALEM, OREGON

SEE MAP  
IS 2 30

APPROX. 1/4 COR.

FOR ASSESSMENT  
PURPOSES ONLY  
DO NOT RELY ON  
FOR ANY OTHER U

Application No. R-76107  
Permit No.

"CERTIFICATE NO. 70093"

SEE MAP  
IS 3 25DD

LOT 4 31.00 Ac.  
**58-3**

SEE MAP  
IS 3 25DB

SEE MAP  
IS 3 25DC

SEE MAP  
IS 3 36

SEE MAP  
IS 3 26

1/4 COR.

WEST

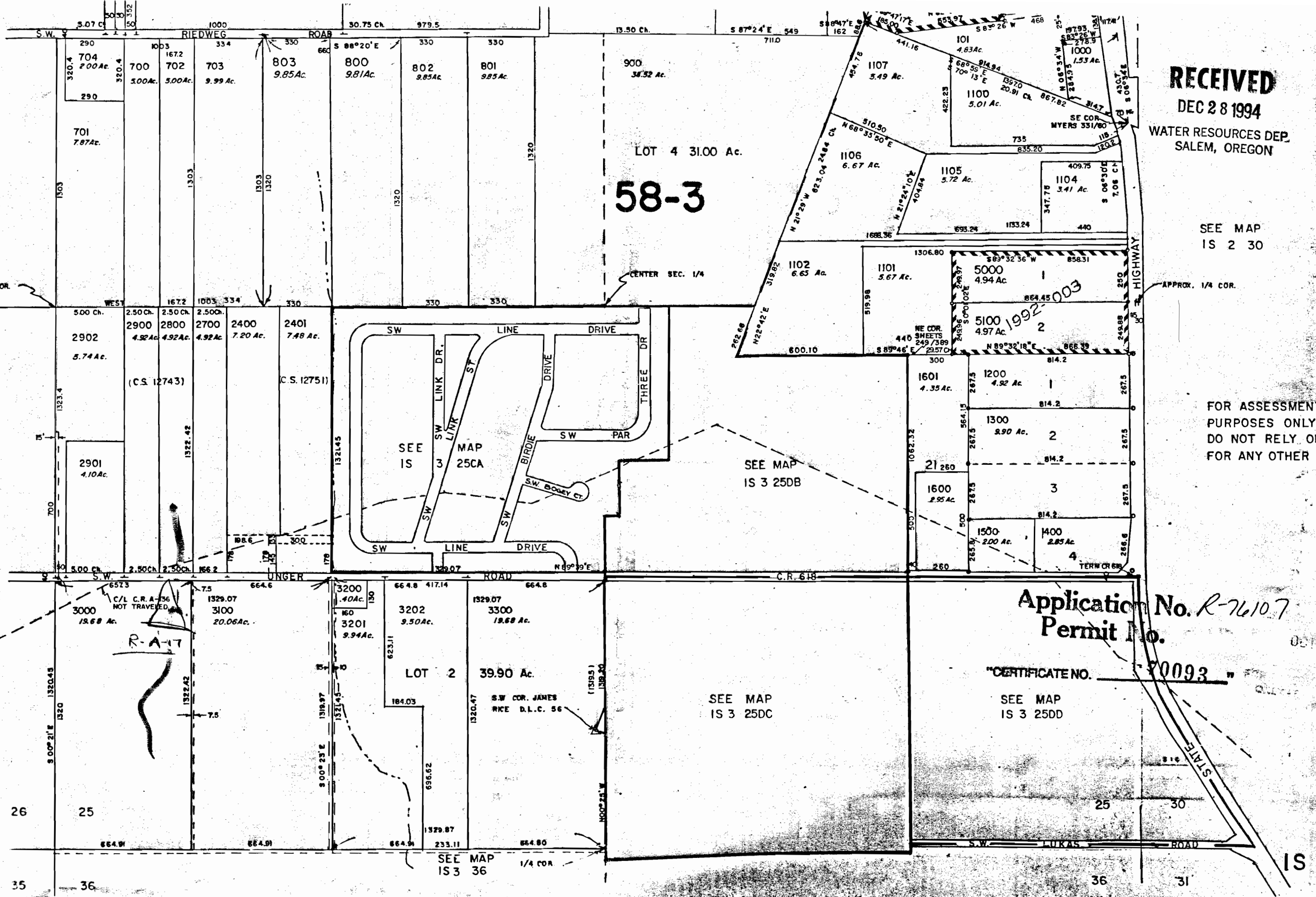
700

5.00 Ch.

7.5

26

35



SEE MAP  
IS 3 26

1/4 COR.

WEST

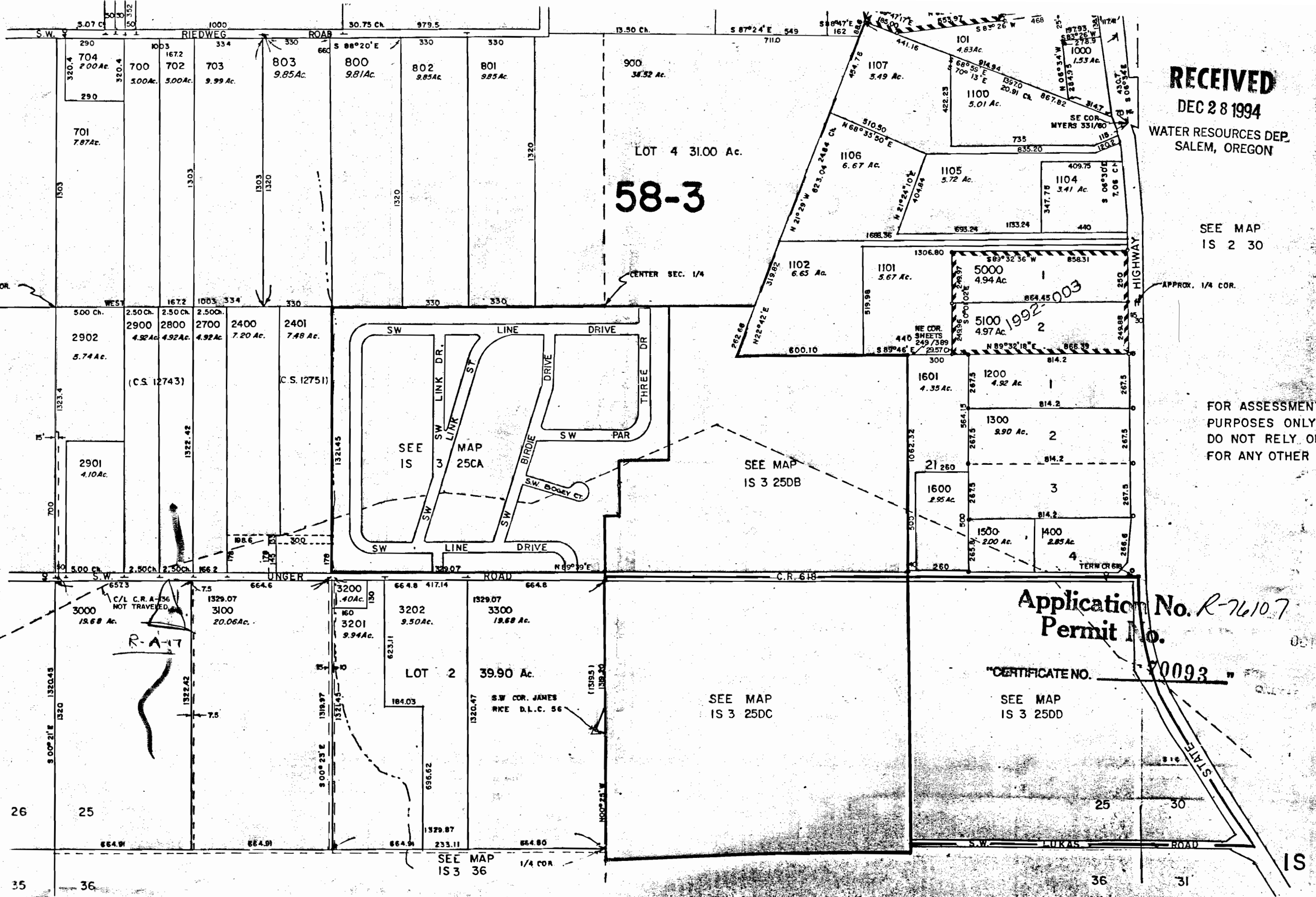
700

5.00 Ch.

7.5

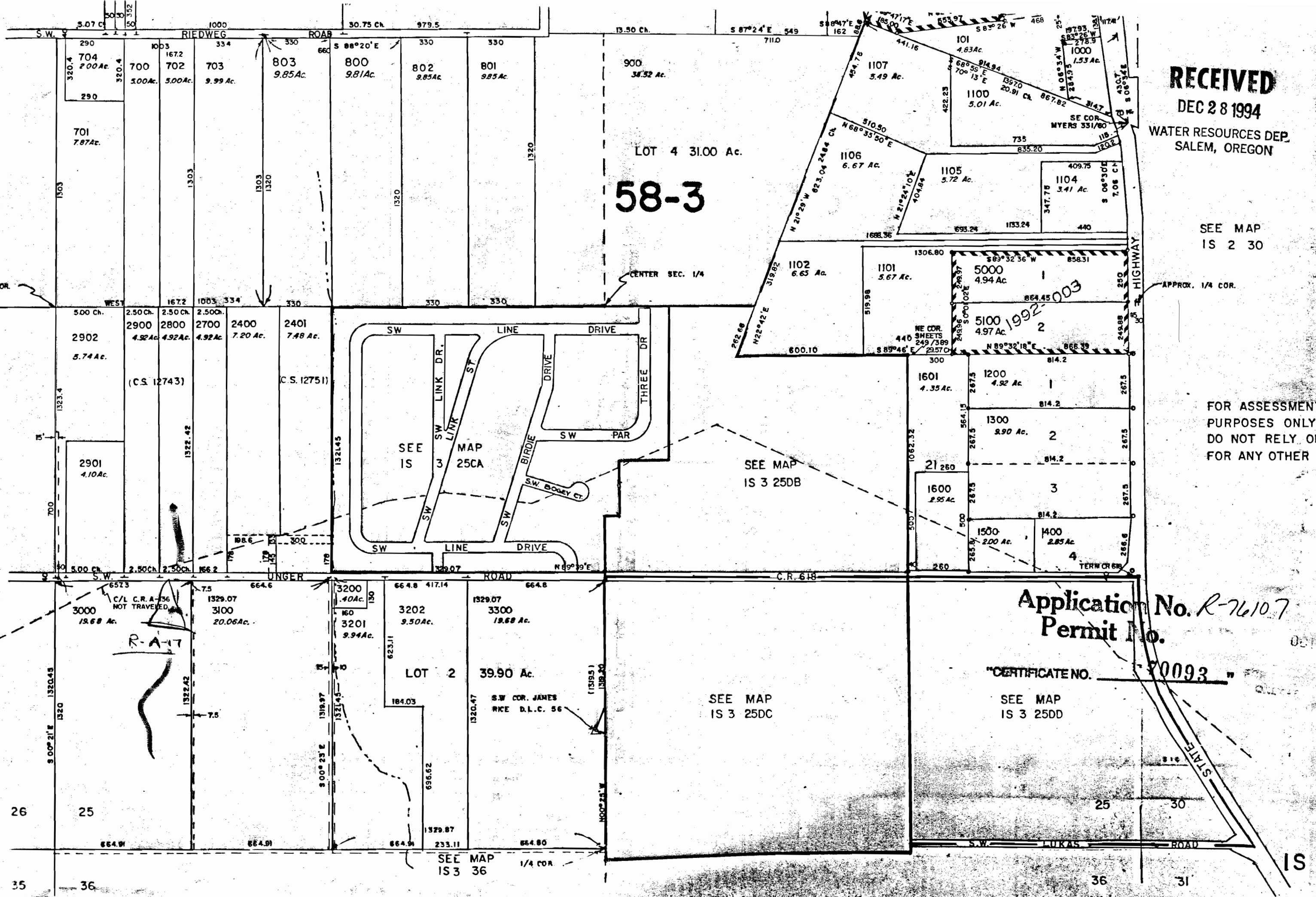
26

35



26

35



25

36

31

IS