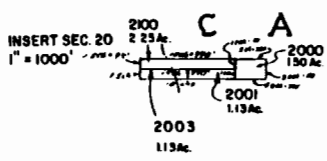
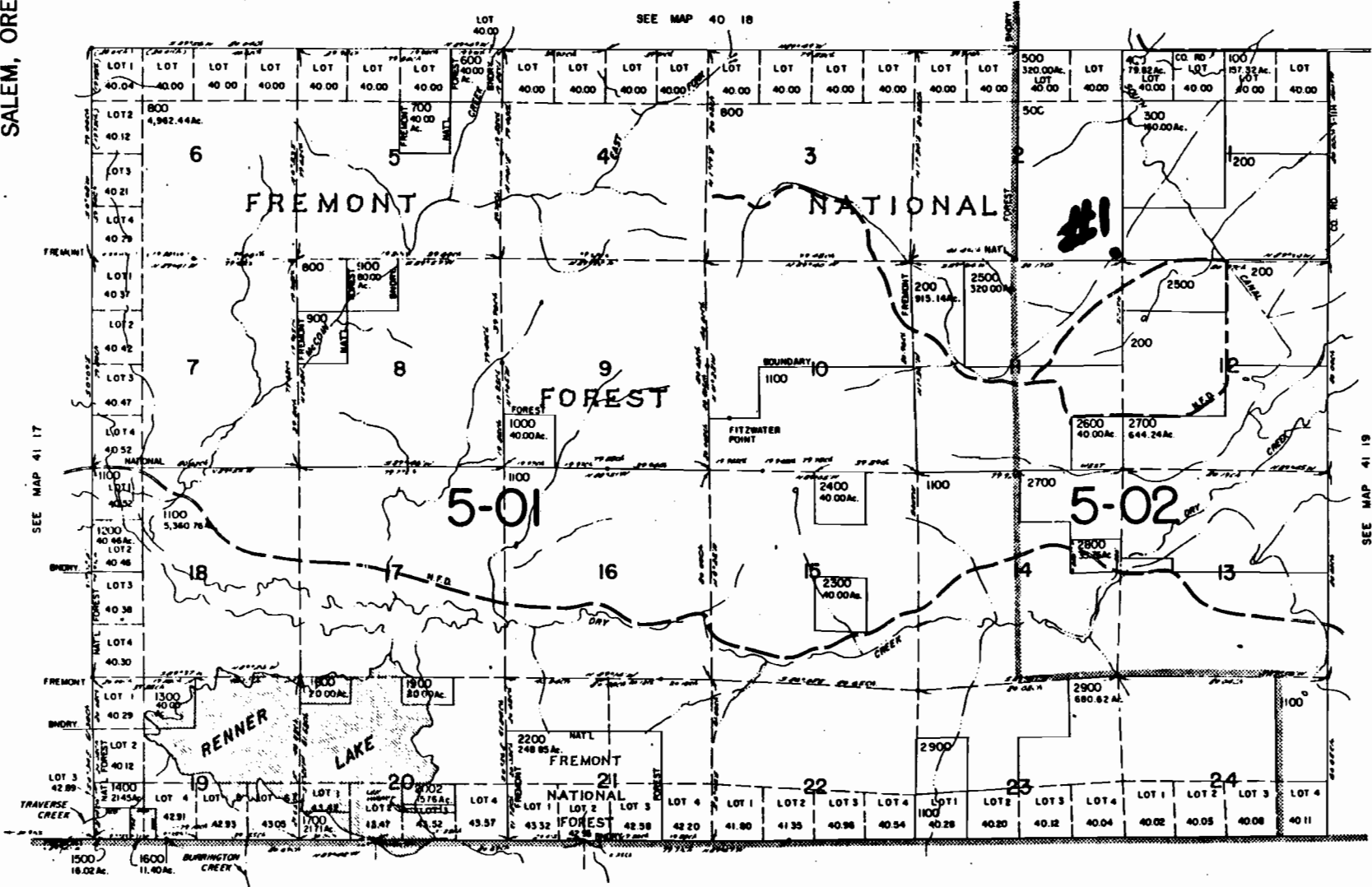


T.41S. R.18E. W.M.
LAKE COUNTY
1" = 2000'

RECEIVED

DEC 28 1994

WATER RESOURCES DEP
SALEM, OREGON



Application No. *R-76115*
 Permit No.

"CERTIFICATE NO. 70101"

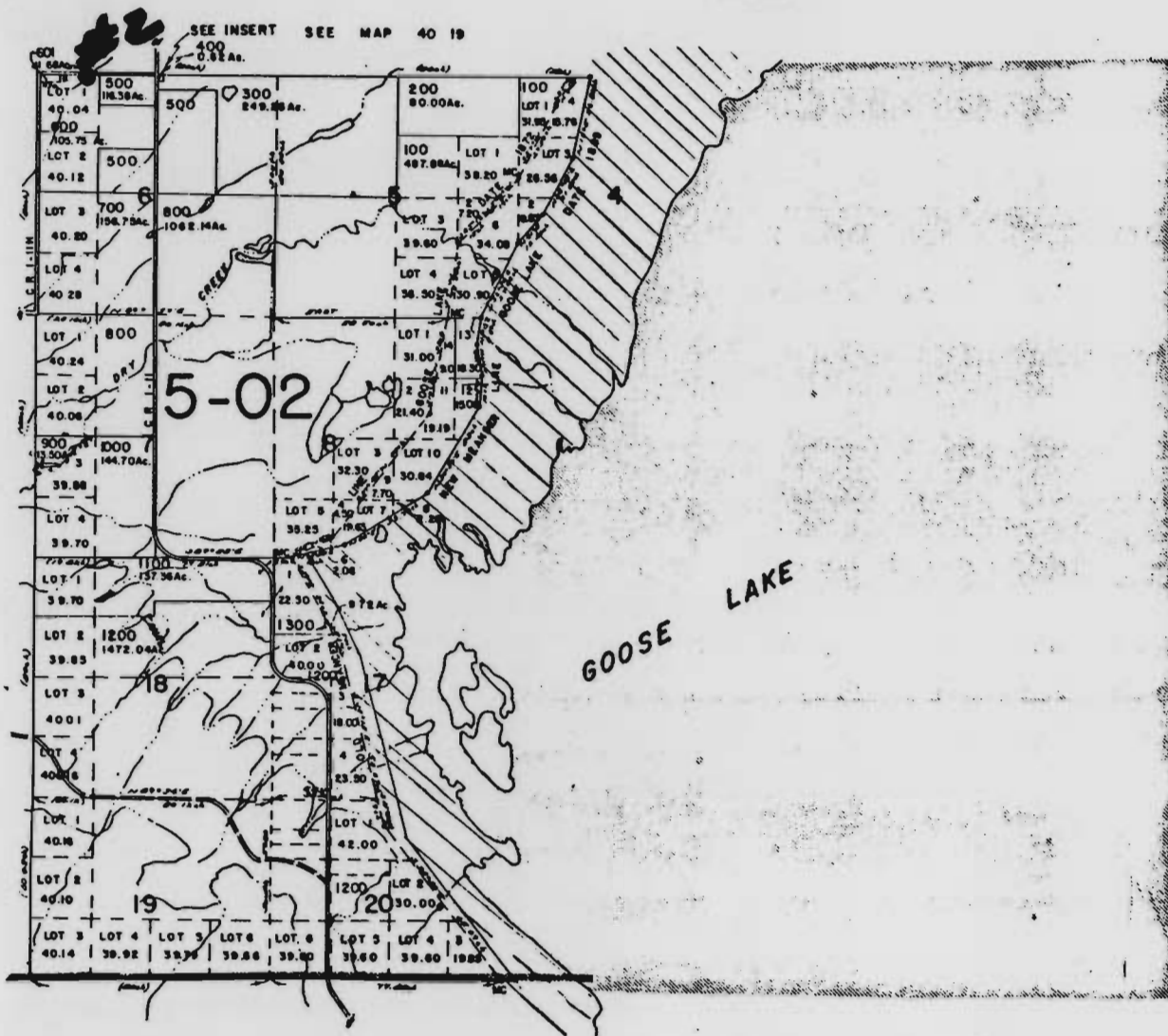
RECEIVED

DEC 28 1994

WATER RESOURCES DEP.
SALEM, OREGON

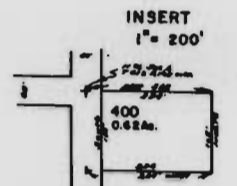
T.41S. R.19E. WM
LAKE COUNTY
1" = 2000'

41 19



CALIFORNIA

Application No. R-76115
Permit No.



- 1. 0.000000 000'
- 2. 0.000000 000'
- 3. 0.000000 000'
- 4. 0.000000 000'
- 5. 0.000000 000'
- 6. 0.000000 000'
- 7. 0.000000 000'
- 8. 0.000000 000'
- 9. 0.000000 000'
- 10. 0.000000 000'

"CERTIFICATE NO. 70101"

SEE MAP 40 20