

This map was prepared for assessment purposes only.

SECTION 22 T.30S. R.5W. W.M.
DOUGLAS COUNTY

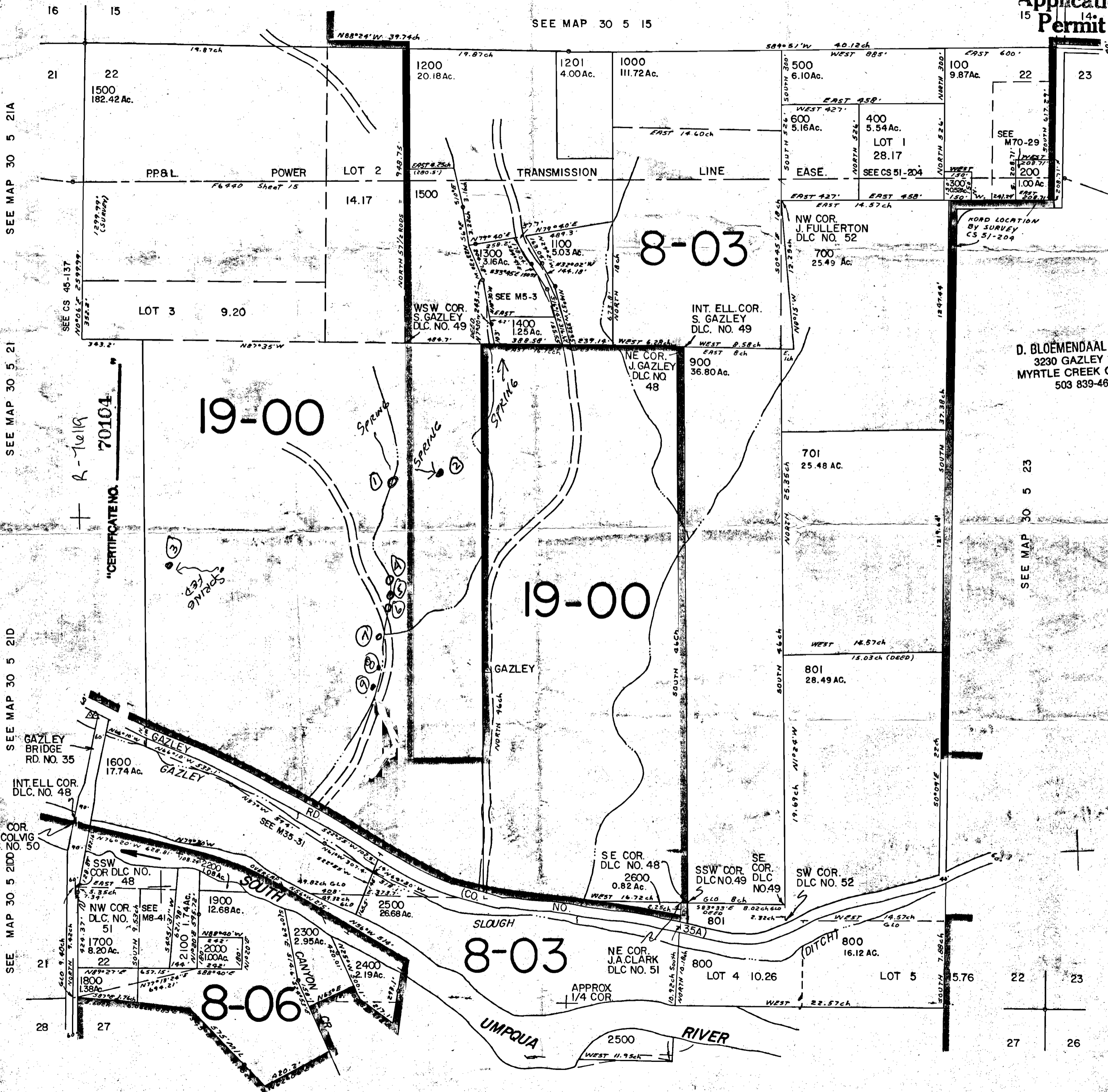
1" = 400'

RECEIVED

30 5 22

DEC 28 1994
WATER RESOURCES DEPT.
SALEM, OREGON

Application No. R-76119
Permit No.



SEE MAP 30 5 21A

SEE MAP 30 5 21

SEE MAP 30 5 21D

SEE MAP 30 5 21DD

SEE MAP 30 5 21DD

SEE MAP 30 5 15

SEE MAP 30 5 23

SEE MAP 30 5 27B

SEE MAP 30 5 27A

30 5 22