

THIS MAP WAS PREPARED FOR ASSESSMENT PURPOSE ONLY.

SECTION 4 T.29S. R.4W. W.M.
DOUGLAS COUNTY

RECEIVED

29 4 4

DEC 28 1994

WATER RESOURCES DEPT.
SALEM, OREGON

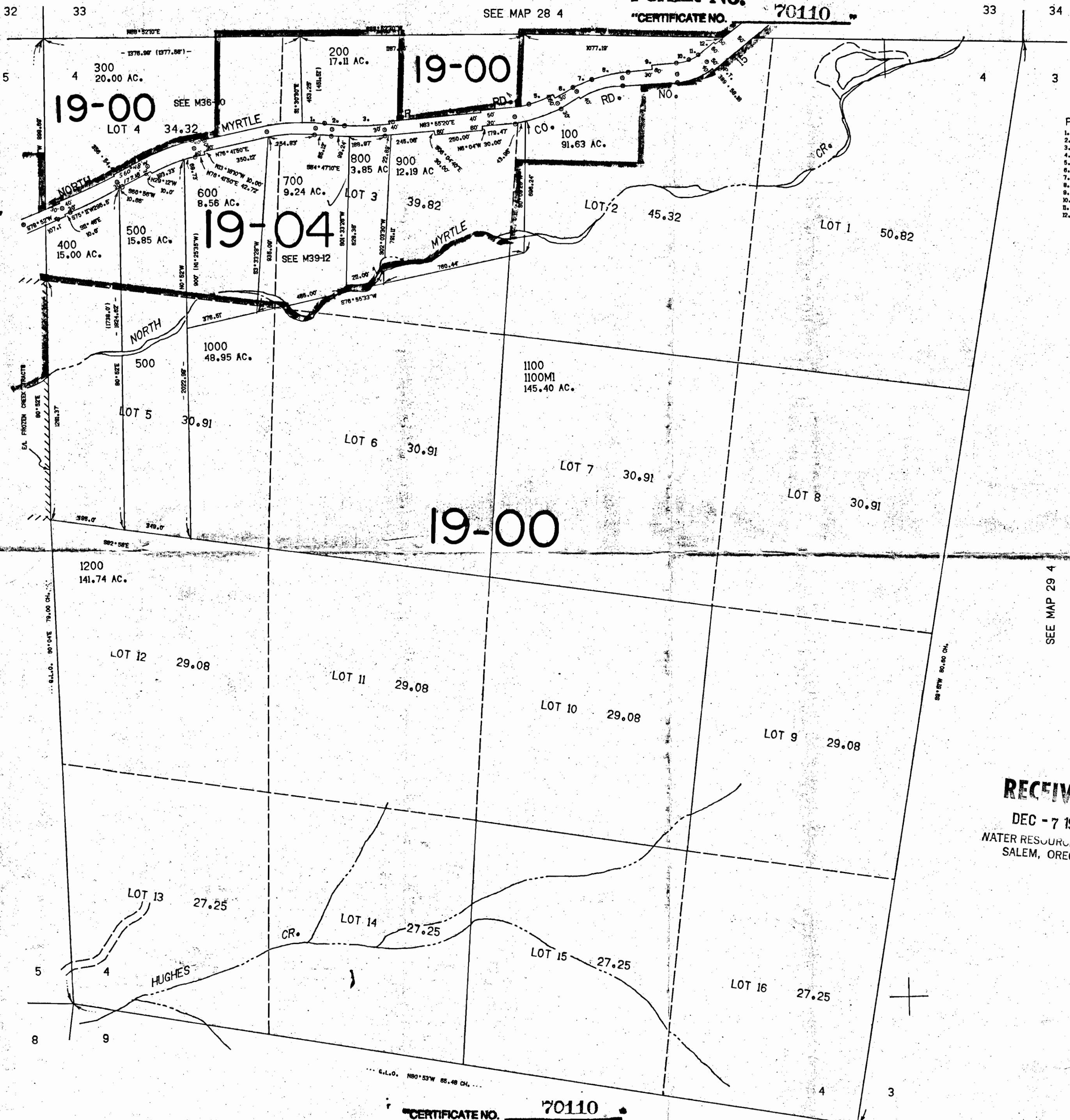
Application No. R-76125

Permit No.

70110

1"=400'
SEE MAP 28 4

CERTIFICATE NO. 70110



PARCEL 200

1.	N78°03'30"E	122.50'
2.	S88°10'30"E	107.51'
3.	N83°38'30"E	252.72'
4.	N83°56'30"E	743.78'
5.	N68°42'30"E	108.88'
6.	N61°54'30"E	181.10'
7.	N83°44'30"E	112.18'
8.	N81°48'30"E	185.81'
9.	N89°20'E	261.75'
10.	N77°12'30"E	87.00'
11.	N63°56'30"E	46.93'
12.	N48°26'30"E	201.38'

SEE MAP 29 4 5

SEE MAP 29 4

RECEIVED
DEC - 7 1994
WATER RESOURCES DEPT.
SALEM, OREGON

523.000

CERTIFICATE NO. 70110

SEE MAP 29 4 R-76125

29 4 4