

SECTION 22 T.29S. R.4W. W.M.
DOUGLAS COUNTY

RECEIVED

DEC 28 1994

WATER RESOURCES DEPT.
SALEM, OREGON

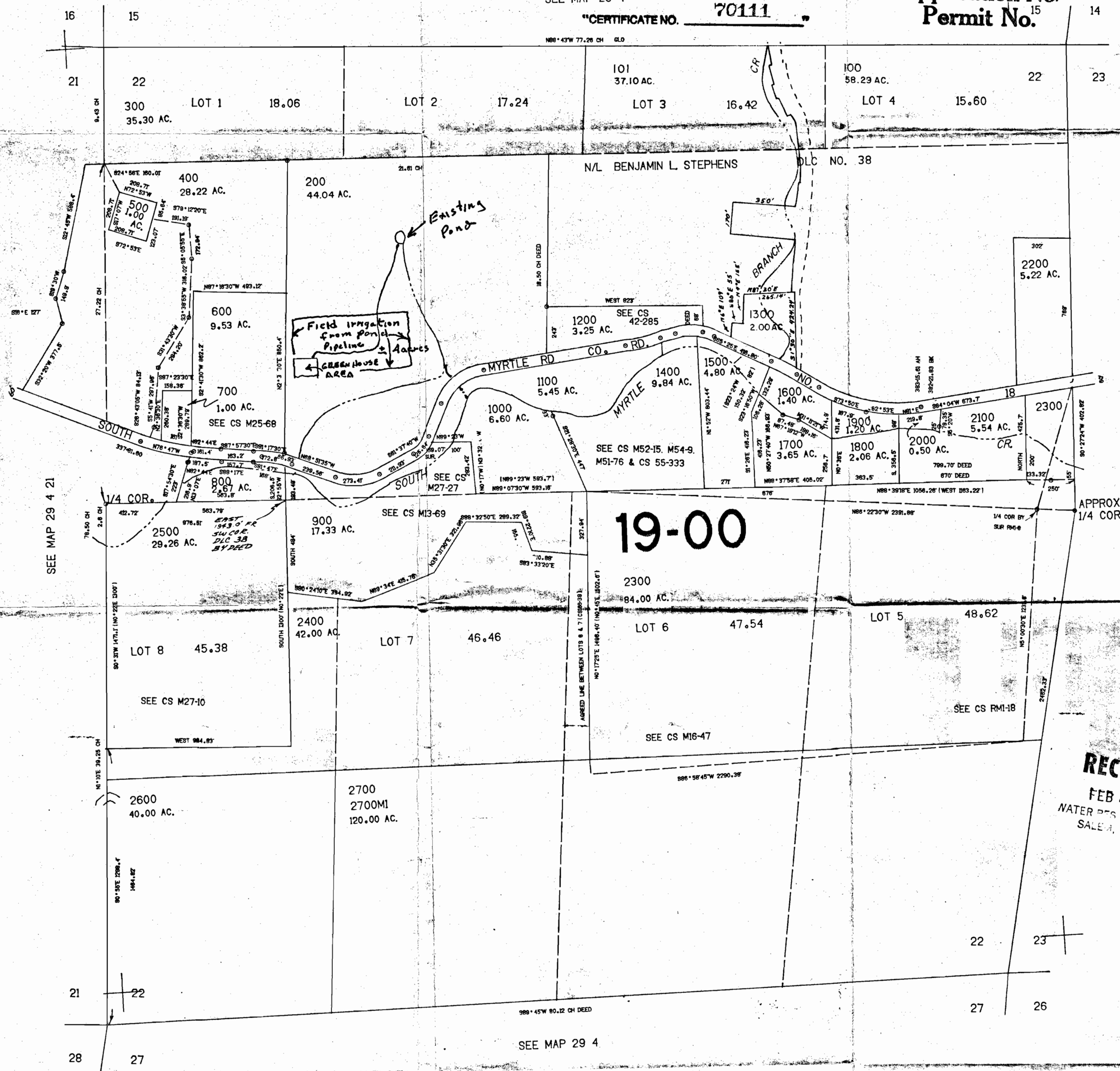
Application No. *R-761210*
Permit No. ¹⁵ ₁₄

SEE MAP 29 4

"CERTIFICATE NO. 70111"

N89°43'W 77.26 CH GLO

THIS MAP WAS PREPARED FOR
ASSESSMENT PURPOSE ONLY.



SEE MAP 29 4 21

SEE MAP 29 4 23

19-00

RECEIVED

FEB - 5 1996
WATER RESOURCES DEPT.
SALEM, OREGON

SEE MAP 29 4