

This map was prepared for assessment purpose only.

RECEIVED  
DEC 28 1994

SECTION 32 T.39S R.19E. W.M.

LAKE COUNTY

1" = 400'

CERTIFICATE NO. 70127

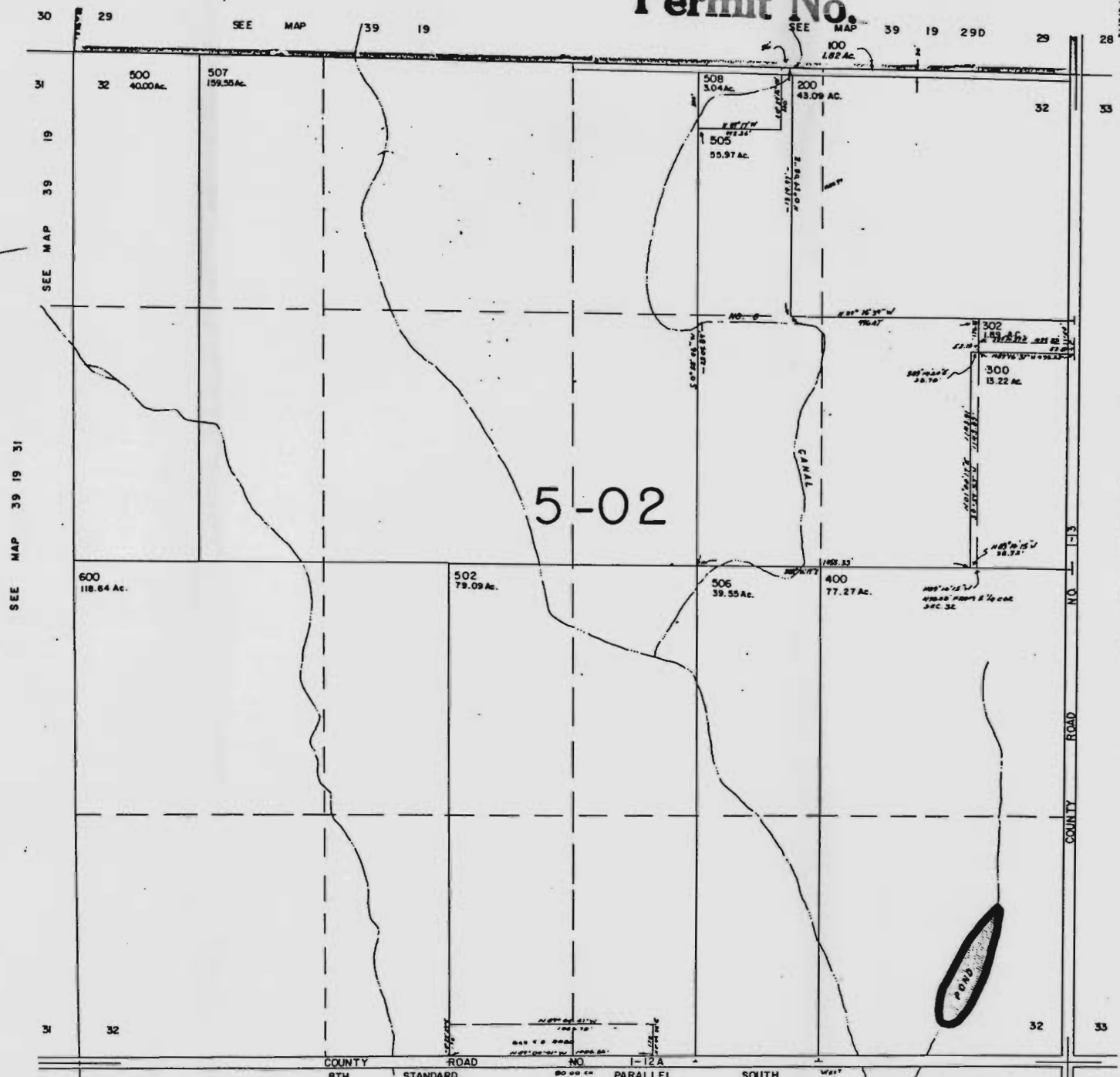
39 19 32

Application No R-76146  
Permit No.

CANCELLED NO.

501  
301  
503  
504  
201

SCALE 1:8500



5-02

SEE MAP 39 19 31

SEE MAP 39 19 33

NO. 1-13 COUNTY ROAD

COUNTY ROAD NO. 1-12A SOUTH

POND