

THIS MAP WAS PREPARED FOR ASSESSMENT PURPOSE ONLY.

SECTION 1 T.26S. R.3W. W.M. DOUGLAS COUNTY

REVISED ON 5-16-94

RECEIVED

DEC 28 1994

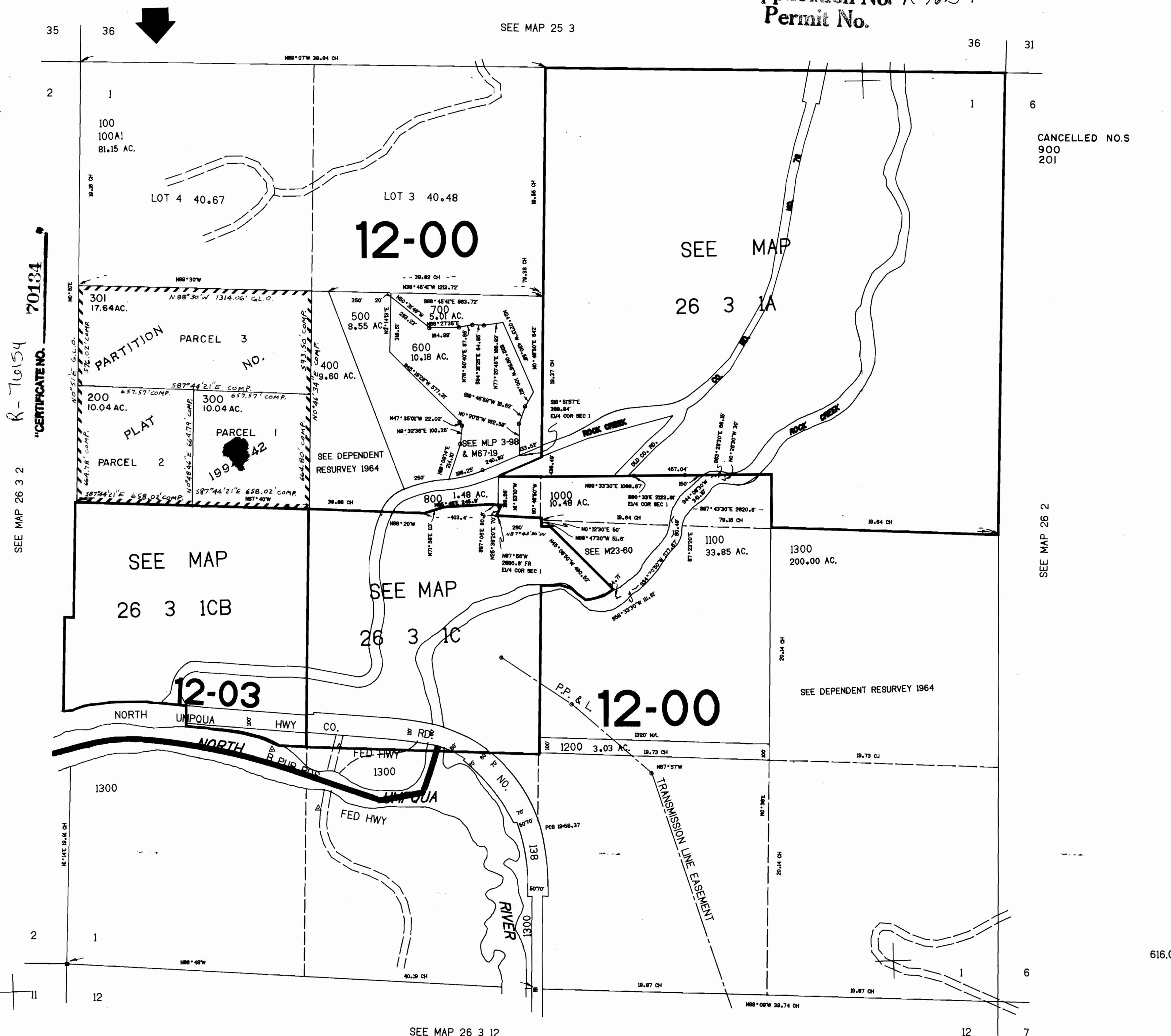
WATER RESOURCES DEP SALEM, OREGON

26 3 1 & INDEX

1"=400'

Application No R-76154 Permit No.

SEE MAP 25 3



SEE MAP 26 3 2 R-76154 "CERTIFICATE NO. 70134"

SEE MAP 26 2

SEE MAP 26 3 12

26 3 1 & INDEX

1.337.000