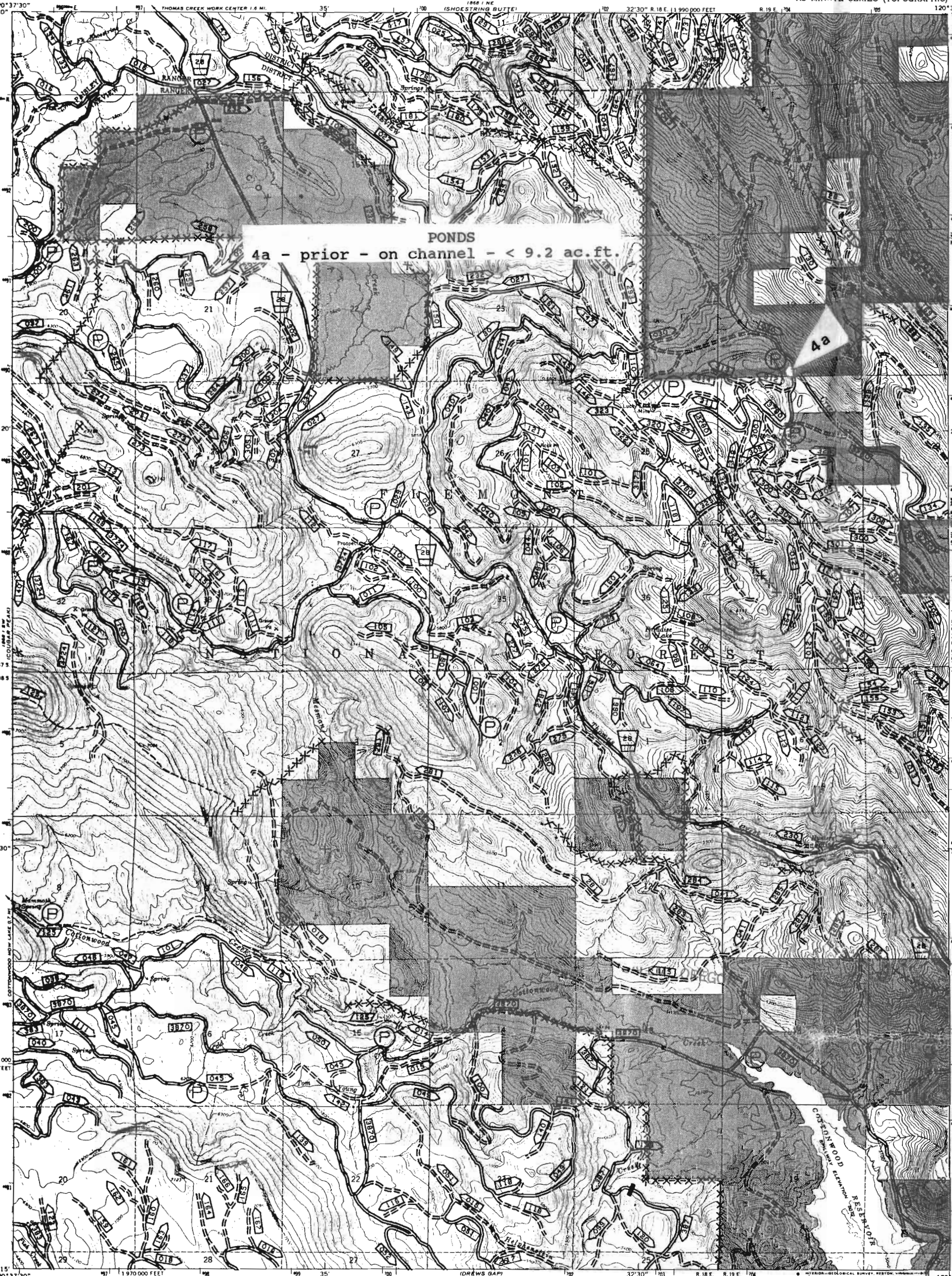


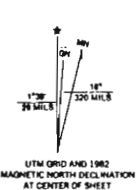
LAKEVIEW, OR 97630  
DEC 28 1994  
RESOURCES DEPT 947-2018  
SALEM, OREGON



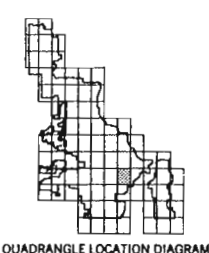
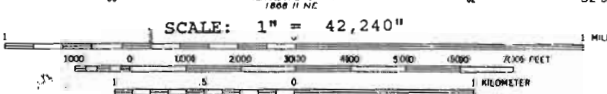
TRANSPORTATION SYSTEM UPD

PRIM	---
SEC	---
IMPR	---
IMPR	---
IMPR	---
IMPR	---
IMPR	---
TRAI	---
INTD	---
HIGH	---
US H	---
OREG	---
STRT	---
UNSH	---
STAT	---
COUN	---
NF	---
NF C	---
NF L	---
TRAI	---
FOR	---
PRY	---
WRI	---
ROPS	---
TEP	---
QNT	---
BLD	---
ROPS	---
OPC	---

Base map prepared by the U.S. Geological Survey  
Control by USGS and NOS/NOAA  
Topography by photogrammetric methods from aerial photographs taken 1960. Field checked 1964  
Polyconic projection. 1927 North American datum, 10,000-foot grid based on Oregon coordinate system, south zone  
1000-meter Universal Transverse Mercator grid ticks, zone 10, shown in blue  
To place on the predicted North American Datum 1983 move the projection lines 18 meters north and 89 meters east as shown by dashed corner ticks  
Modification to USGS base map the Geomatics Service Center from 1979 aerial photography and 1982 correction guides furnished by the Pacific Northwest Region.  
Landnet revised according to additional Forest Service evidence.



- NATIONAL FOREST BOUNDARY
- National Forest Boundary
  - Alienated Land within the National Forest Boundary as of June 1981
  - Special Area Boundary
- TOWNSHIP AND SECTION LINE CLASSIFICATION
- Surveyed, Location Reliable
  - Surveyed, Location Unreliable
  - ..... Unsurveyed, Protracted



COX FLAT, OREG.  
N4215-W12030/73  
1964  
PHOTOREVISED 1980  
DMA 1868 I SE-SERIES V892

Application No. R-70164  
Permit No. 70141  
"CERTIFICATE NO. \_\_\_\_\_"

59