

SECTION 23 T.27S. R.7W. W.M.  
DOUGLAS COUNTY

Application No R-70173  
Permit No.

27 7 23

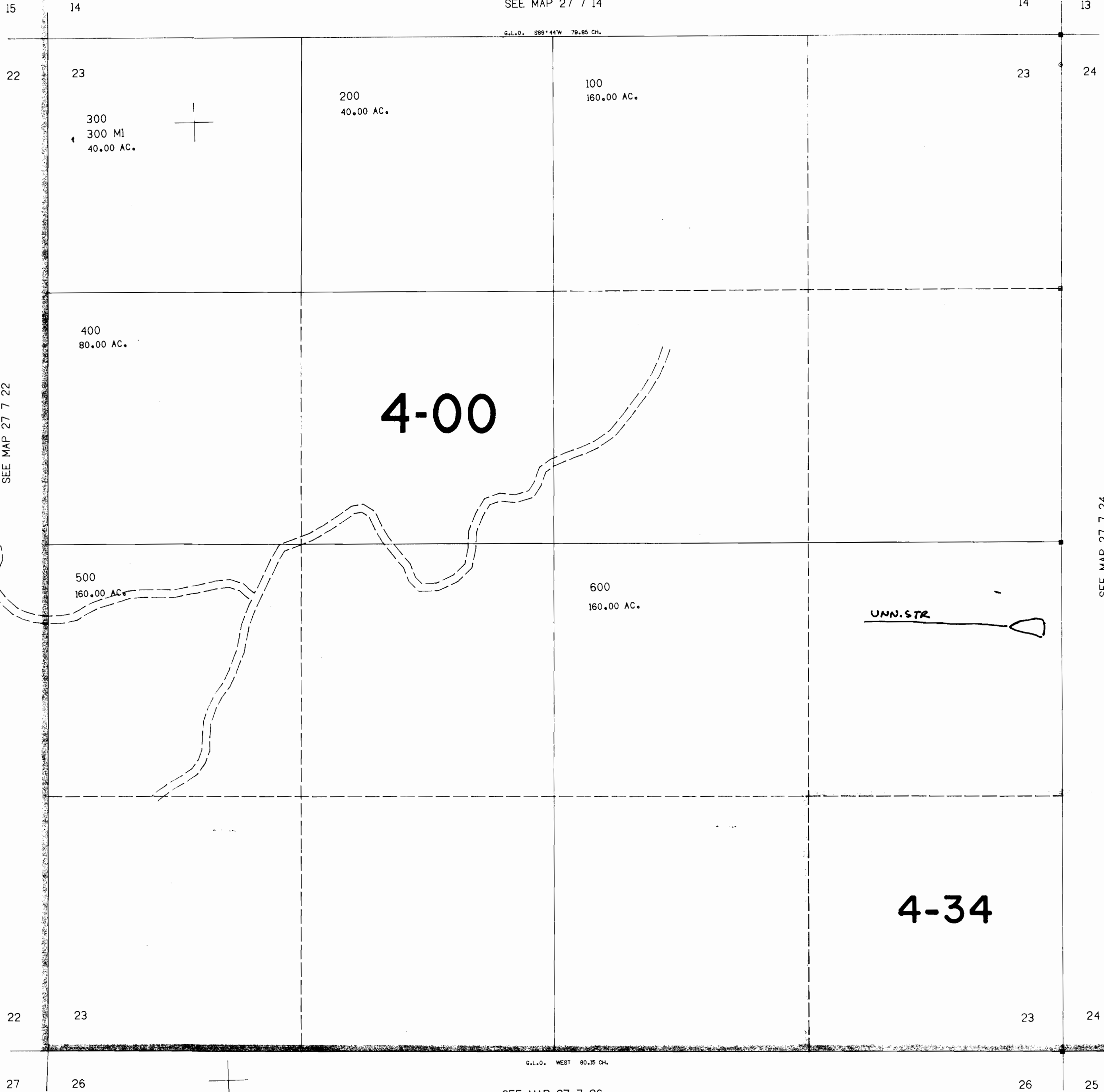
THIS MAP WAS PREPARED FOR  
ASSESSMENT PURPOSE ONLY.

1"=400'

RECEIVED  
DEC 27 1994  
NAT.  
SOUTH, OF

SEE MAP 27 7 14

G.L.O. S89°44'W 79.85 CH.



SEE MAP 27 7 24  
R-70173  
CERTIFICATE NO. 70149

27 7 23