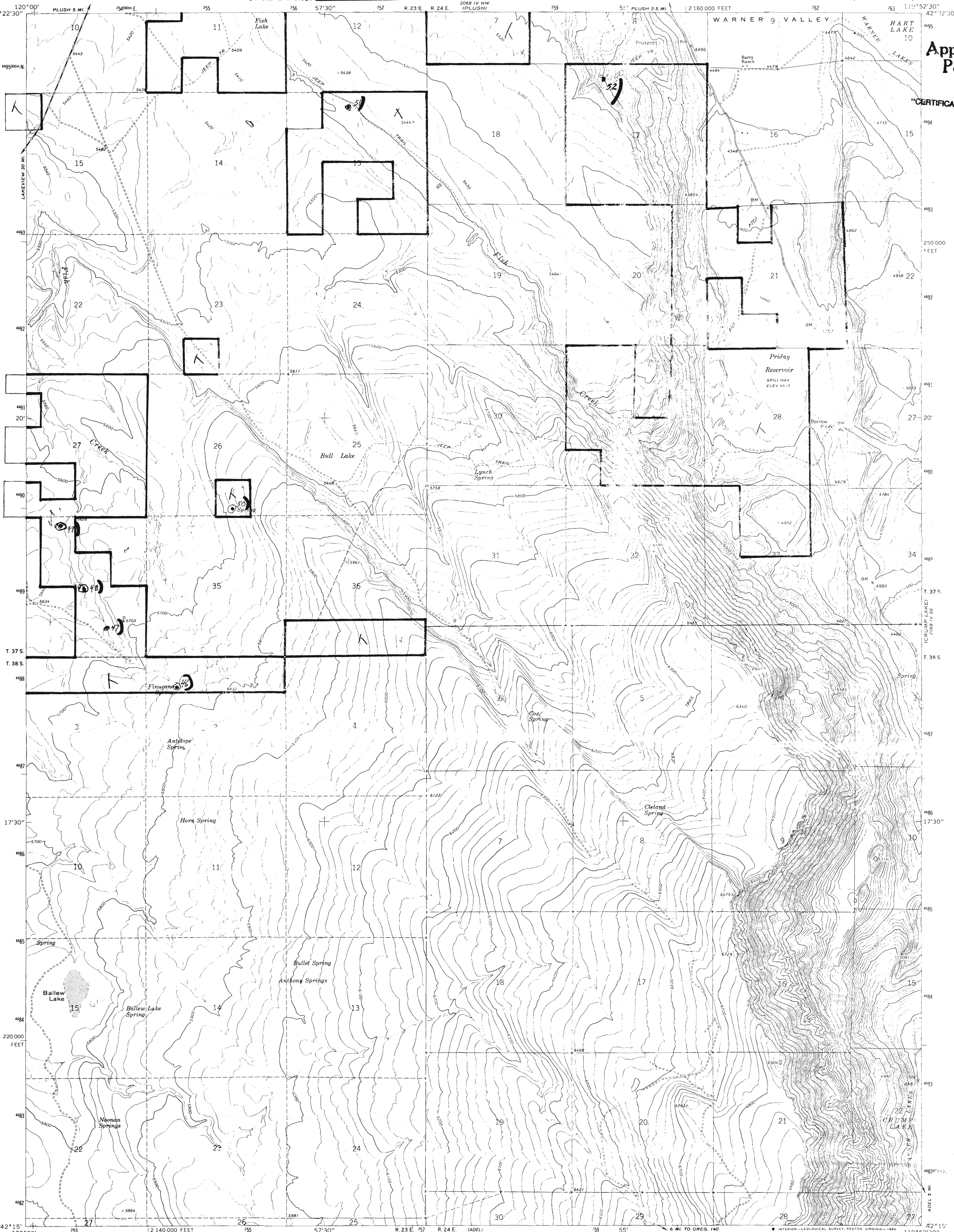


CERTIFICATE NO. **70162**

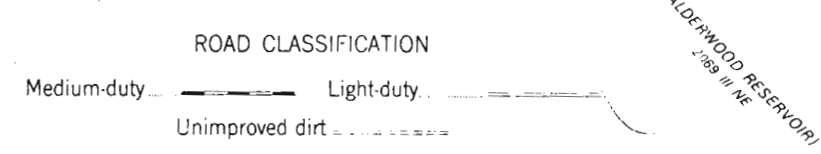
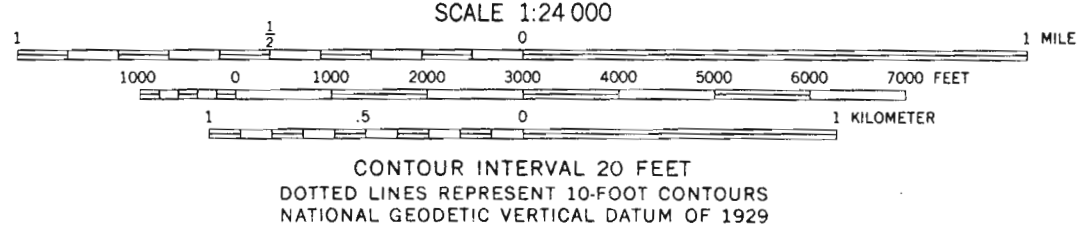
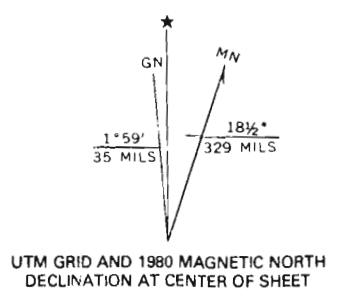
Application No. **R-76203**
Permit No.

CERTIFICATE NO. **70162**

Application # R76203



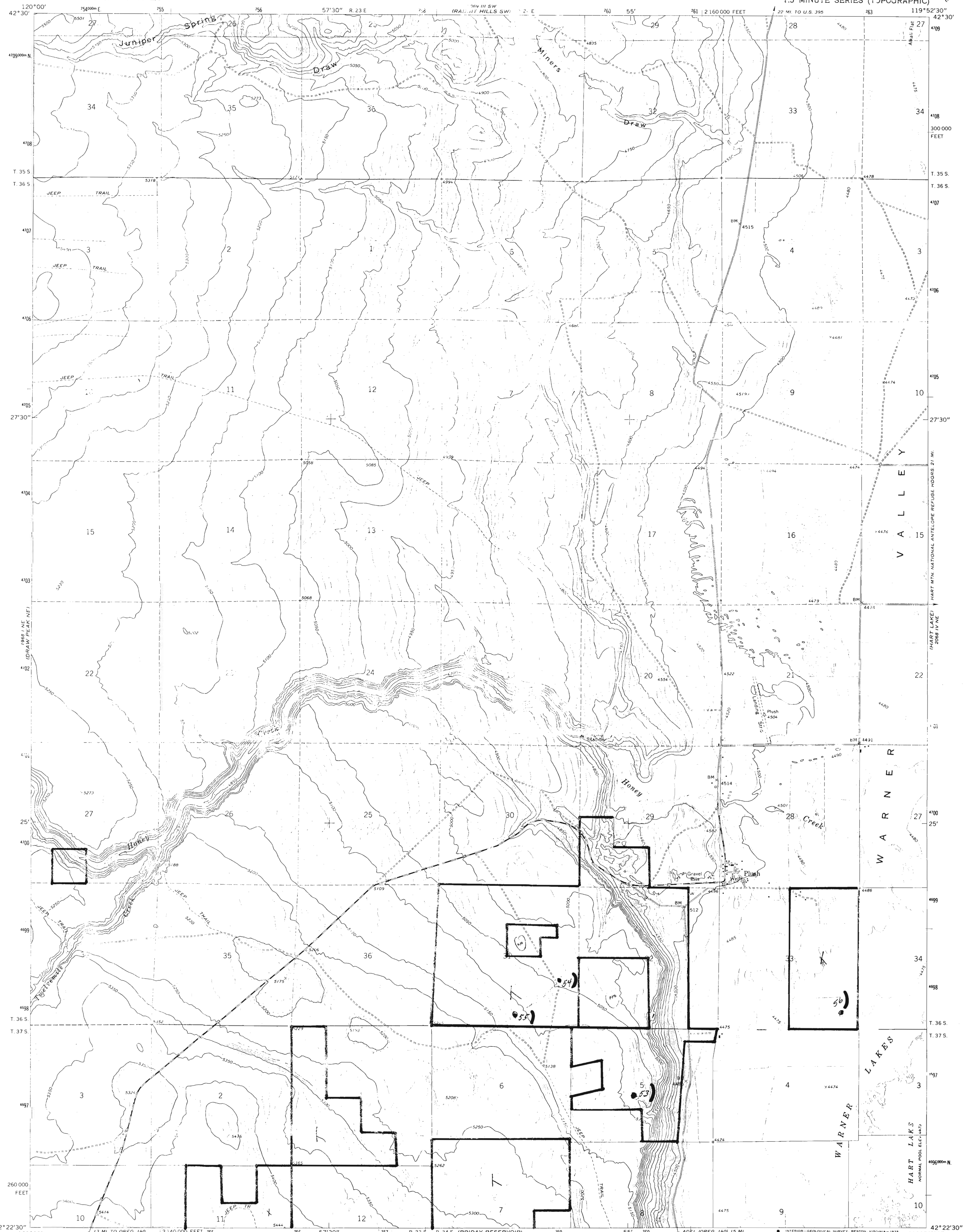
Mapped, edited, and published by the Geological Survey
Control by USGS and NOS/NOAA
Topography by photogrammetric methods from aerial photographs taken 1964. Field checked 1967
Polyconic projection. 1927 North American datum
10,000-foot grid based on Oregon coordinate system, south zone
1000-meter Universal Transverse Mercator grid ticks, zone 11, shown in blue
To place on the predicted North American Datum 1983 move the projection lines 17 meters north and 87 meters east as shown by dashed corner ticks
Fine red dashed lines indicate selected fence lines



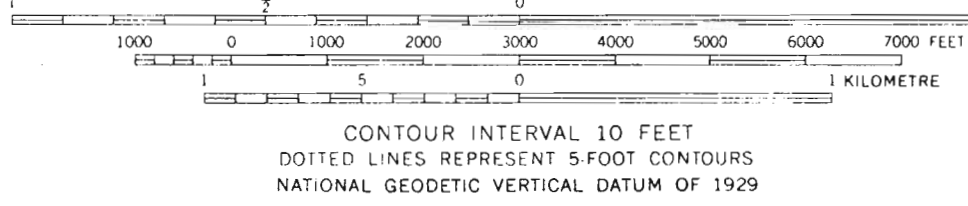
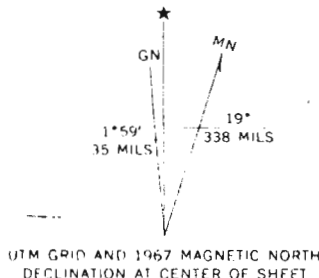
THIS MAP COMPLIES WITH NATIONAL MAP ACCURACY STANDARDS
FOR SALE BY U. S. GEOLOGICAL SURVEY, DENVER, COLORADO 80225, OR RESTON, VIRGINIA 22092
A FOLDER DESCRIBING TOPOGRAPHIC MAPS AND SYMBOLS IS AVAILABLE ON REQUEST

Revisions shown in purple compiled from aerial photographs taken 1979 and other source data. This information not field checked. Map edited 1980

PRIDAY RESERVOIR, OREG.
N4215-W11952.5/7.5
1967
PHOTOREVISED 1980
DMA 2068 IV SW-SERIES V892



Mapped, edited, and published by the Geological Survey
Control by USGS and USC&GS
Topography by photogrammetric methods from aerial
photographs taken 1964. Field checked 1967
Polyconic projection. 1927 North American datum
10,000-foot grid based on Oregon coordinate system,
south zone
1000 metre Universal Transverse Mercator grid ticks,
zone 11, shown in blue
Fine red dashed lines indicate quarter-section fence lines.



Application # R-76203
CERTIFICATE NO. 70162
ROAD CLASSIFICATION
Medium-duty Light-duty
Unimproved dirt

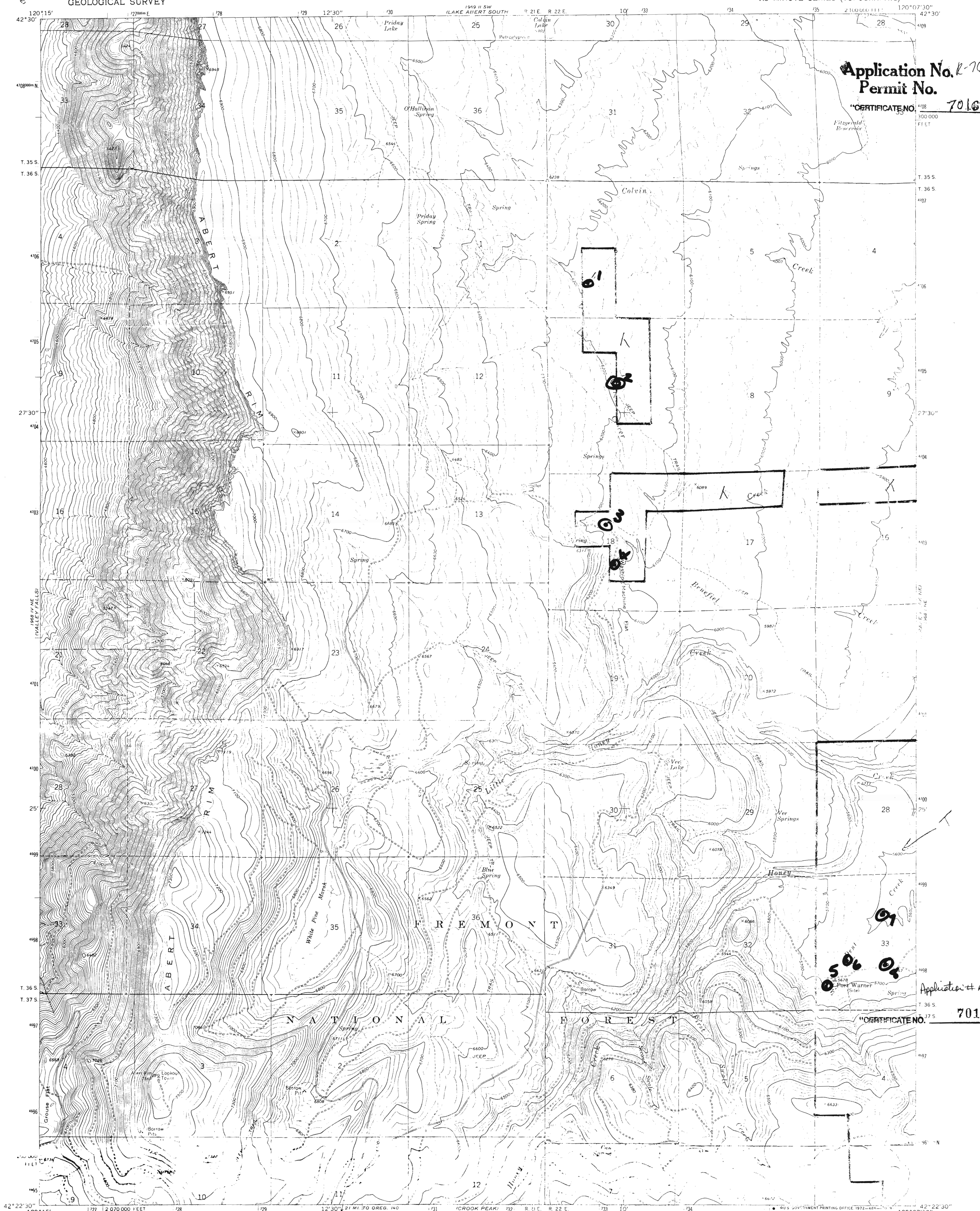


THIS MAP COMPLIES WITH NATIONAL MAP ACCURACY STANDARDS
FOR SALE BY U. S. GEOLOGICAL SURVEY, DENVER, COLORADO 80225, OR RESTON, VIRGINIA 22092
A FOLDER DESCRIBING TOPOGRAPHIC MAPS AND SYMBOLS IS AVAILABLE ON REQUEST

PLUSH, OREG.
N4222.5—W11952.5/7.5
1967
AMS 2068 IV NW—SERIES V892

Application No. R-76203
Permit No.

CERTIFICATE NO. 70162



Mapped, edited, and published by the Geological Survey
Control by USGS and USC&GS
Topography by photogrammetric methods from aerial
photographs taken 1967. Field checked 1968.
Polyconic projection, 1927 North American datum.
10,000-foot grid based on Oregon coordinate system,
south zone.
1000-meter Universal Transverse Mercator grid ticks,
zone 10, shown in blue.

UTM GRID AND 1968 MAGNETIC NORTH
DECLINATION AT CENTER OF SHEET

THIS MAP COMPLIES WITH NATIONAL MAP ACCURACY STANDARDS
FOR SALE BY U.S. GEOLOGICAL SURVEY, DENVER, COLORADO 80225, OR WASHINGTON, D. C. 20242
A FOLDER DESCRIBING TOPOGRAPHIC MAPS AND SYMBOLS IS AVAILABLE ON REQUEST

LITTLE HONEY CREEK, OREG.
N42225-W120075

1968

AMS 1068-1 NW, SERIES 1000