

40' WIDE EASEMENT FOR INGRESS/EGRESS  
 Section 36 T.25 R3E W.M.  
 Clackamas Co.

MARKED CHASE OF THE 1" X 38" PIPE HAS SIMILAR CA...

DEC 1994

**NOTE:**  
 THIS DISTANCE SUPERSEDES THE DISTANCE OF 356.63 SHOWN ON DS. # 22188

**PARCEL III**  
 326258 SQ.FT.  
 7.490 AC ±

R: 580.96  
 Δ: 13° 59' 00"  
 L: 141.79  
 C: 141.44  
 S 22° 56' 10" E

N 89° 13' 39" E 2279.32' MEAS.

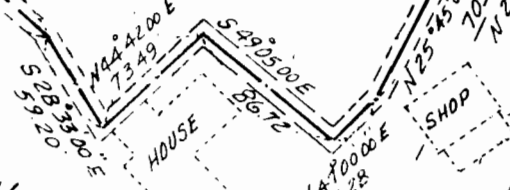
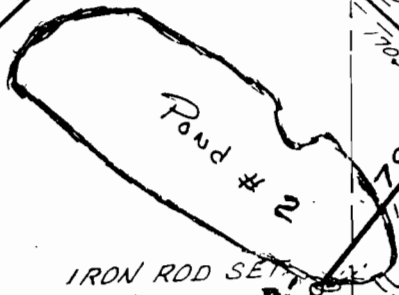
678.0' CALC.  
 (RS # 21224-67692)

1009  
 3.70 AC

12' GRAVEL TRAVELED ROADWAY ENCROACHES

SEE DETAIL A (WELL SITE)

1001  
 4.58 AC



**PARCEL II**  
 4200639 SQ.FT.  
 4.606 AC ±  
 (INCLUDES WELLSITE)

1010  
 PARCEL  
 94329  
 2.165 AC

Eagle Creek

Open channel

BRASS SCREW SET IN CONC. TABLE, ON CONC. SLAB.

TRANSFORMER

IRON ROD SET

Application # R 76242-722.30  
 Permit # 247.46

CERTIFICATE NO. 70198

SURVEYS:

