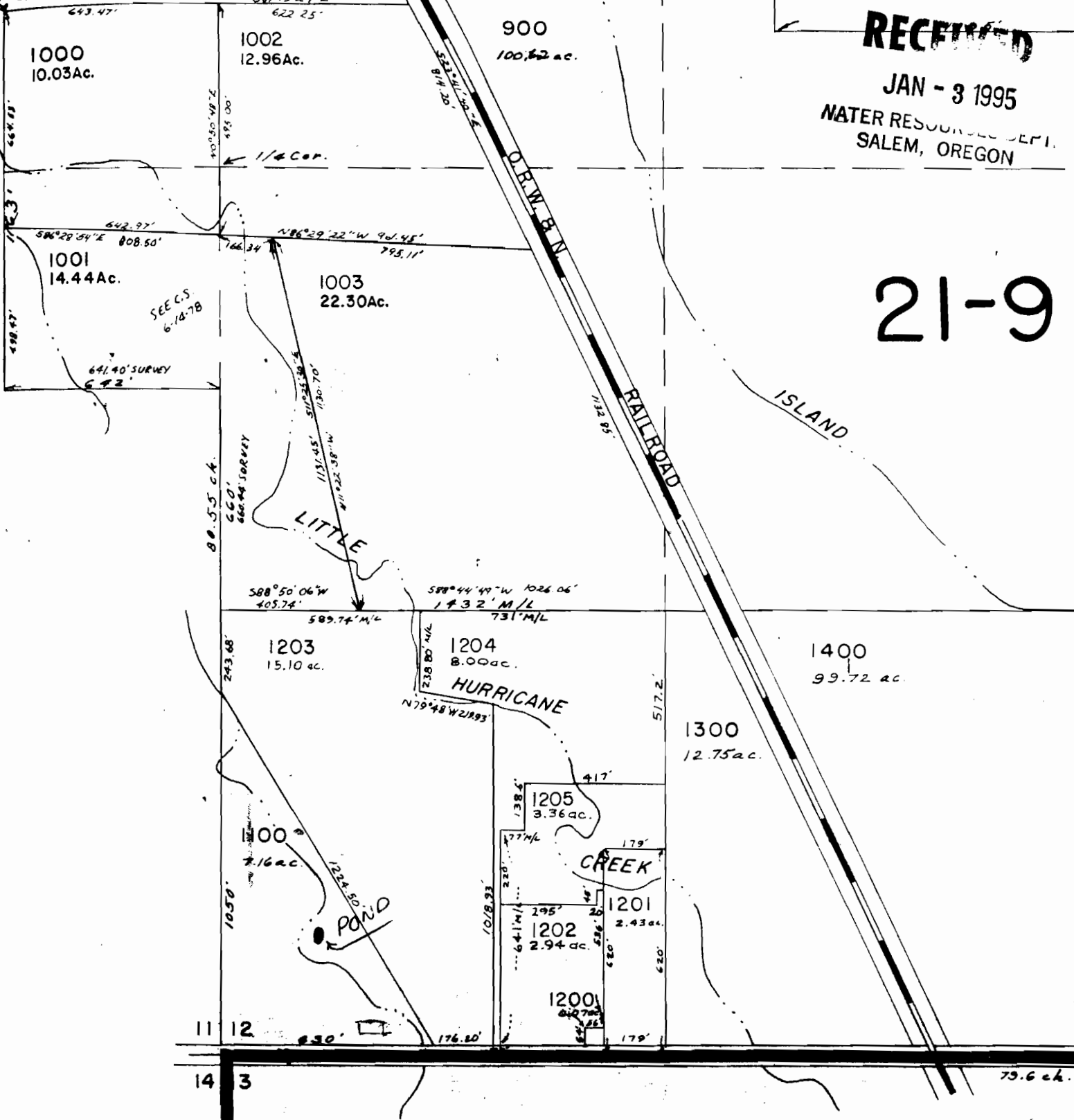


See Map 23

N.0°02'N. 1023' & 678'E.  
of SW. Cor. NE 45E 4 Sec. 11



RECEIVED

JAN - 3 1995  
WATER RESOURCES DEPT.  
SALEM, OREGON

21-9

Application No. R-76260  
Permit No.  
"CERTIFICATE NO. 70216"

RECEIVED  
NOV - 8 1994  
WATER RESOURCES DEPT.  
SALEM, OREGON

See Map