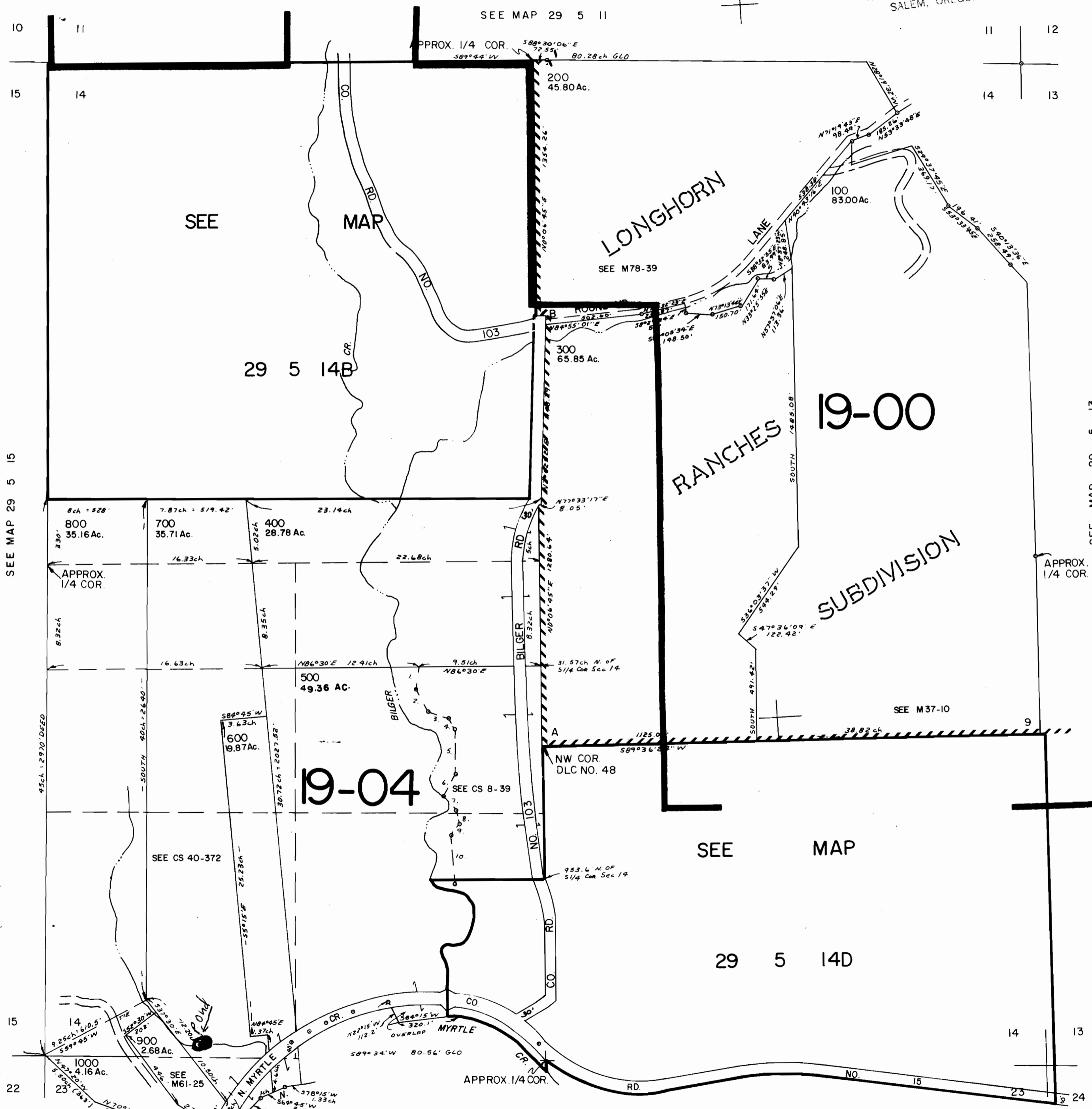


SECTION 14 T.29 S. R.5W. W.M.
 DOUGLAS COUNTY

1" = 400'

JAN - 3 1995
 WATER RESOURCES DEPT
 SALEM, OREGON

This map was prepared for
 assessment purposes only.



PARCEL 500
 C/L BILGER CR
 BY DV277, P.37
 1.513°27'W 102.96'
 2.517°19'E 128.70'
 3.581°03'E 124.08'
 4.533°40'E 50.62'
 5.50°43'W 234.10'
 6.528°15'W 131.74'
 7.542°25'E 98.34'
 8.57054'E 77.75'
 9.537°W 70.16'
 10.53°35'E 253.90'

"CERTIFICATE NO. 70220