

SECTION 35 T.25S. R.6W. W.M.  
DOUGLAS COUNTY

RECEIVED

JAN - 3 1995 25 6 35  
WATER RESOURCES DEPT  
SALEM, OREGON

REVISED ON  
4-20-94

Application No. R-76265  
Permit No. 70221

THIS MAP WAS PREPARED FOR  
ASSESSMENT PURPOSE ONLY.

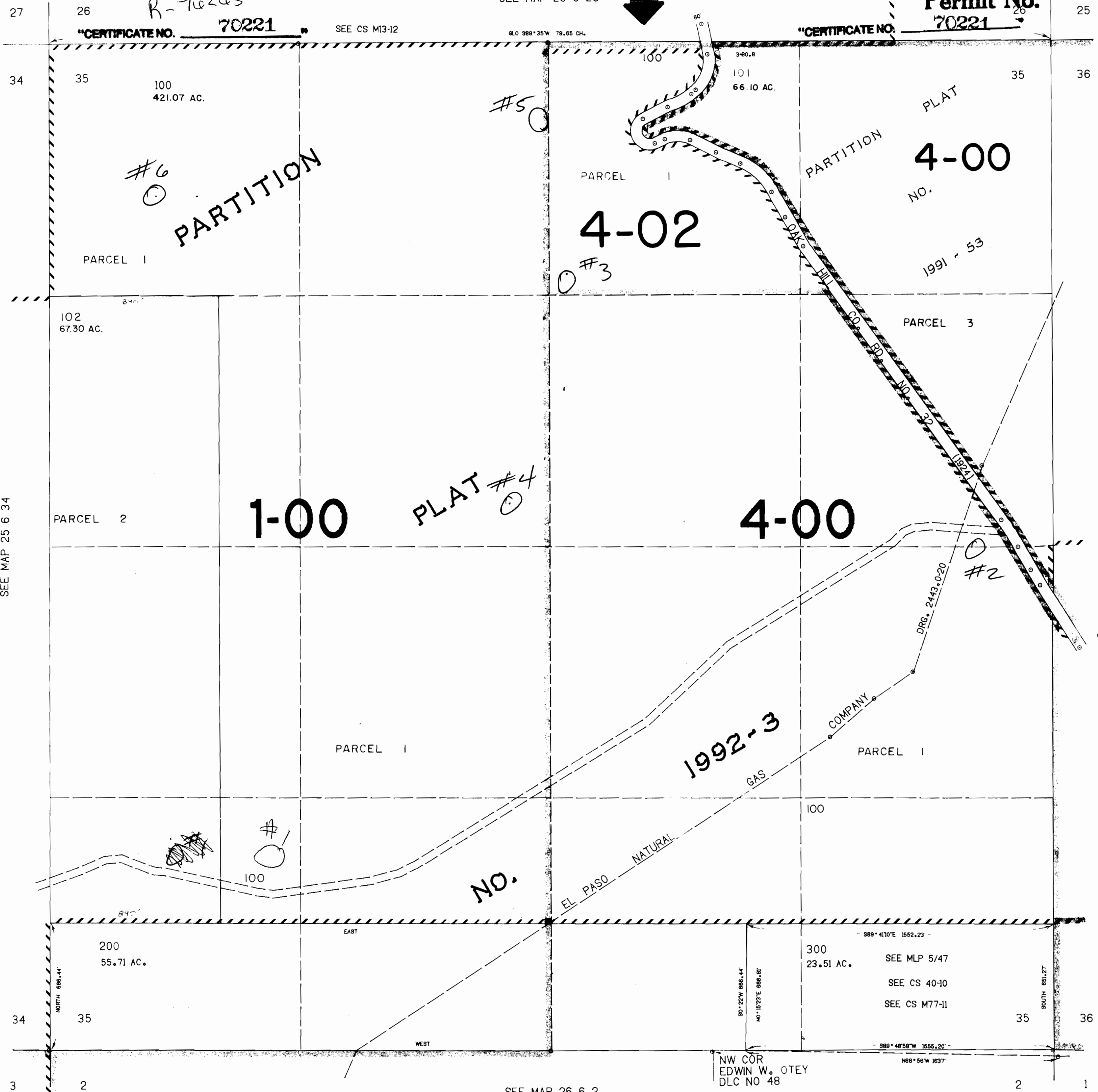
1"=400'

SEE MAP 25 6 26



"CERTIFICATE NO. 70221"

"CERTIFICATE NO. 70221"



SEE MAP 25 6 34

SEE MAP 25 6 36

SEE MAP 25 6 36CC

SEE MAP 26 6 2

625.000