

THIS MAP WAS PREPARED FOR ASSESSMENT PURPOSE ONLY.

SECTION 21 T.27S. R.4W. W.M. DOUGLAS COUNTY

1"=400'

Application No. R-70268 Permit No.

REVISED ON 12-16-93

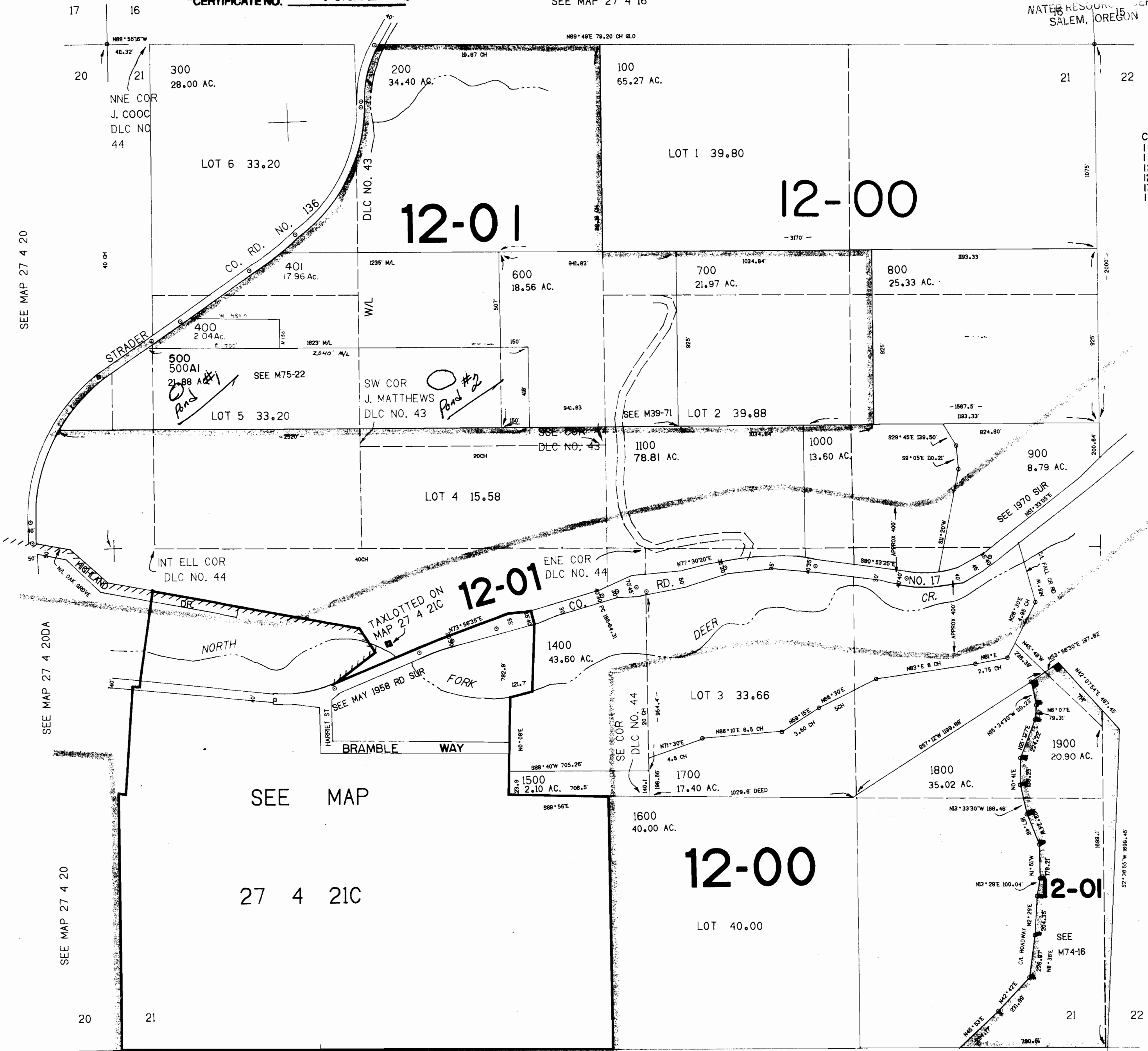
27 4 21 & INDEX

"CERTIFICATE NO. 70224"

SEE MAP 27 4 16

RECEIVED JAN - 3 1995 WATER RESOURCES DEPT SALEM, OREGON

CANCELLED NO.S 1100U1 1100U2 1200U1 1200U2 1300U1 1300U2



12-01

12-00

12-01

12-00

12-01

SEE MAP

27 4 21C

SEE MAP 27 4 28

SEE MAP 27 4 22

SEE MAP 27 4 20

SEE MAP 27 4 20DA

SEE MAP 27 4 20

27 4 21 & INDEX