

SE1/4 SEC.14 T.26S. R.4W. W.M.  
DOUGLAS COUNTY

Application No. R-76269  
Permit No.

THIS MAP WAS PREPARED FOR  
ASSESSMENT PURPOSE ONLY.

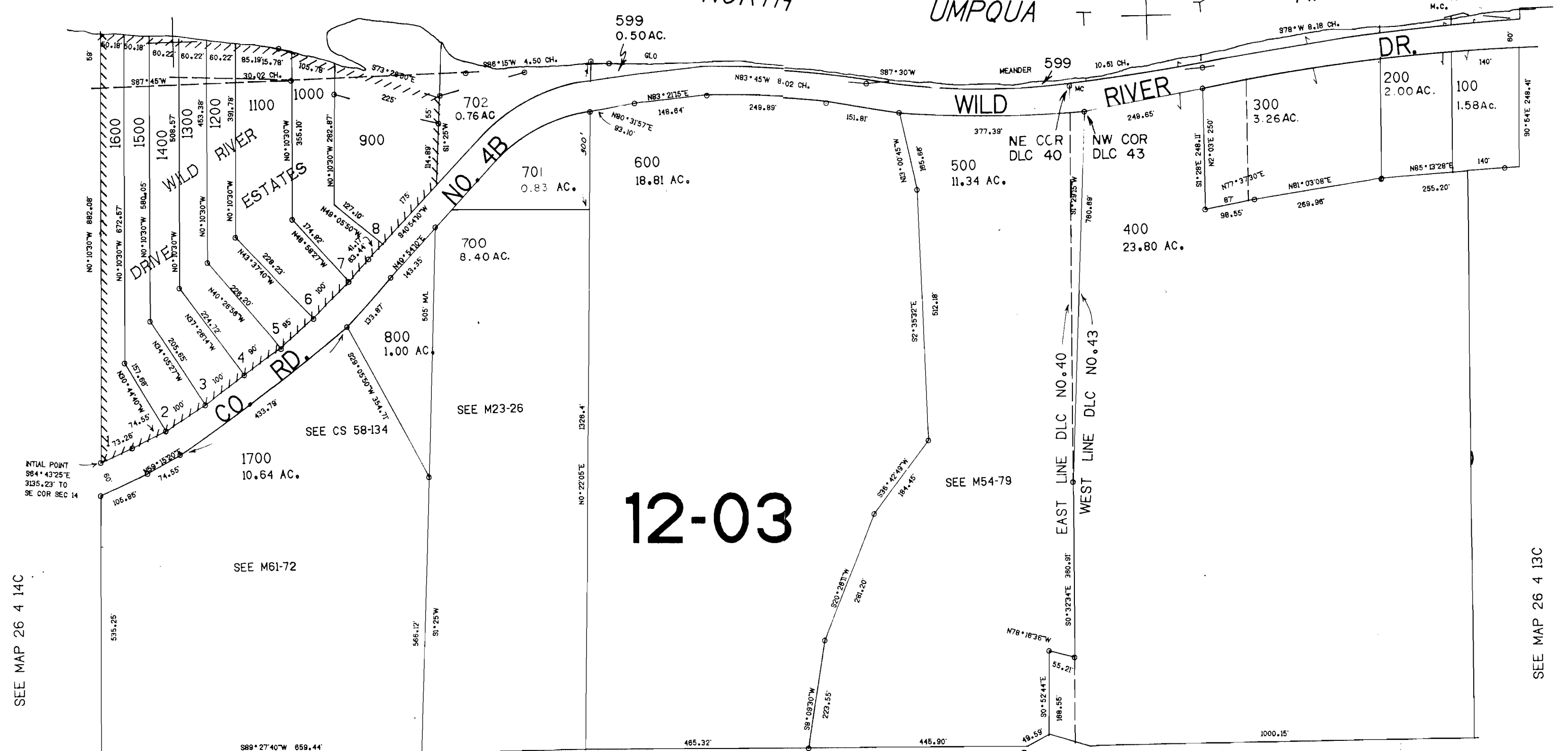
APPROX.  
CEN. SEC.

1"-200'

1/4 COR.

SEE MAP 26 4 14A

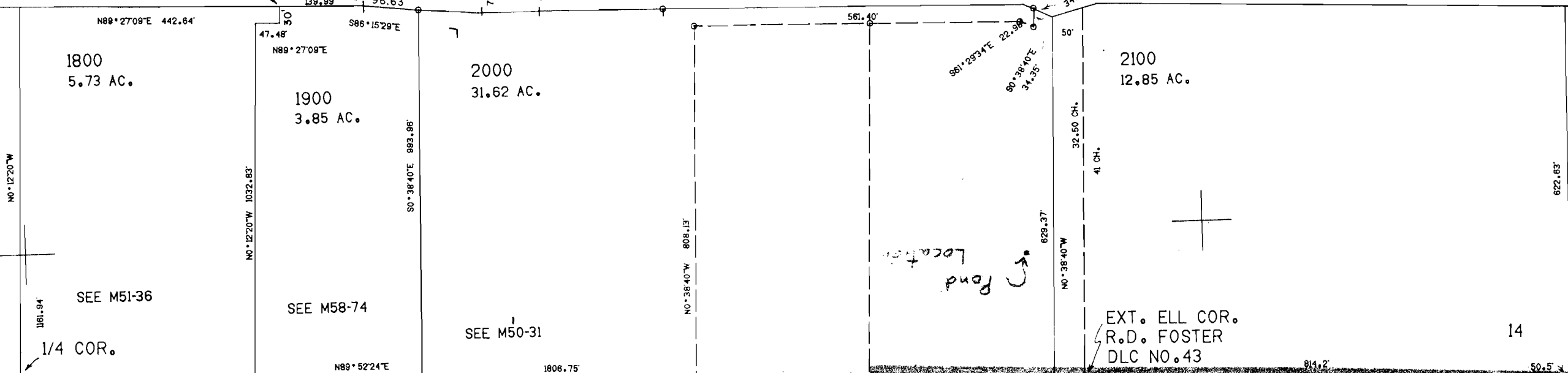
NORTH  
UMPQUA RIVER



SEE MAP 26 4 14C

SEE MAP 26 4 13C

NORTH UMPQUA HWY. CO. RD. NO. 4



607.000

TEMPORARY DRAFT  
COPY

SEE MAP 26 4 23

12-00

R-76269  
"CERTIFICATE NO. 70225"

SEE MAP 26 4 23

SE COR.  
WM. TRASK  
DLC NO. 40

300.000