

WATER RESOURCES DIVISION  
SALEM, OREGON  
JAN - 2 1998

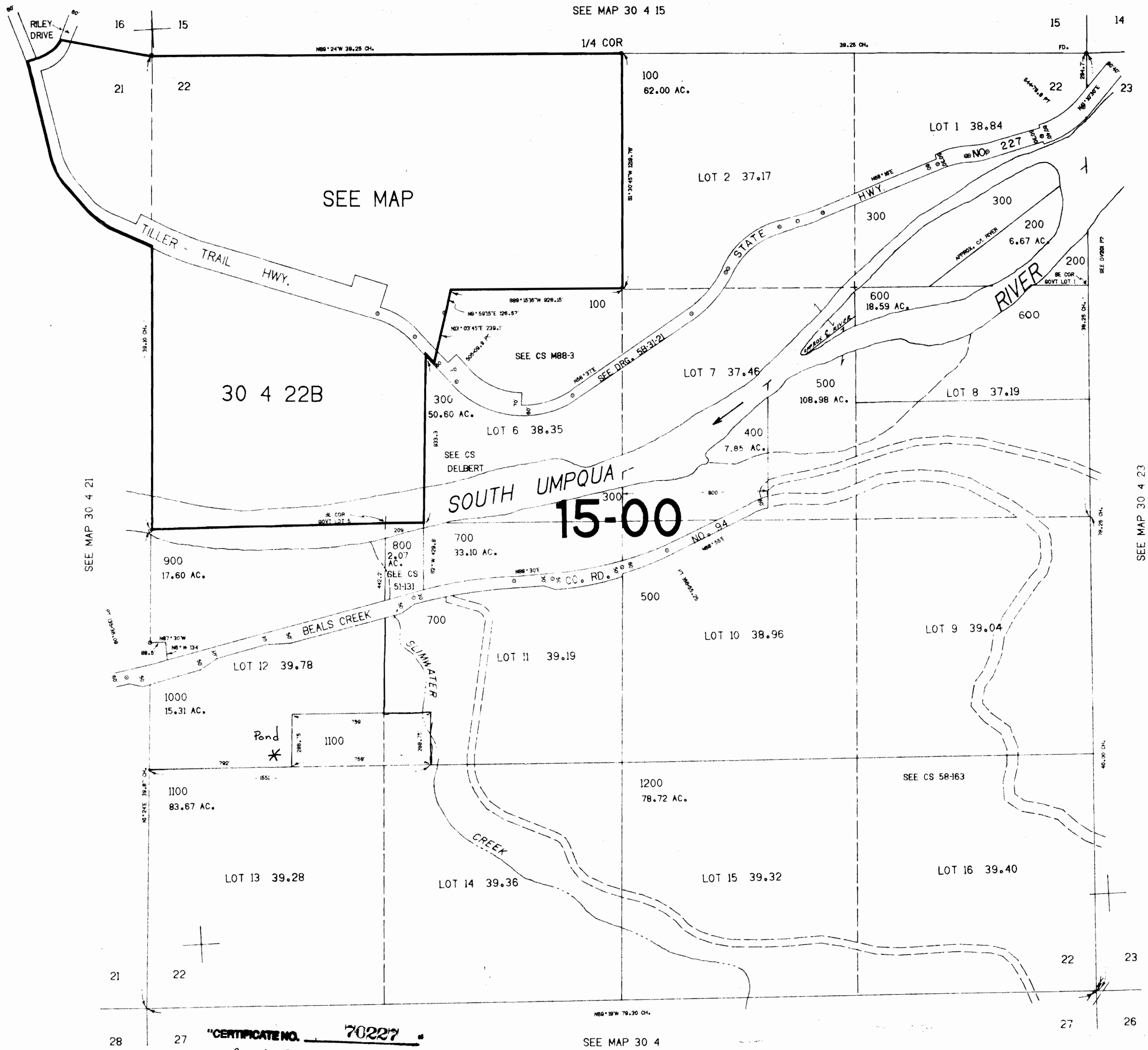
SECTION 22 T.30S. R.4W. W.M.  
DOUGLAS COUNTY

Application No. R-76271  
Permit No.

30 4 22  
& INDEX

THIS MAP WAS PREPARED FOR  
ASSESSMENT PURPOSE ONLY.

1"=400'



SEE MAP 30 4 21

SEE MAP 30 4 23

"CERTIFICATE NO. 70227"  
R-76271

SEE MAP 30 4

476.000

30 4 22  
& INDEX

1.291.000