

17-3

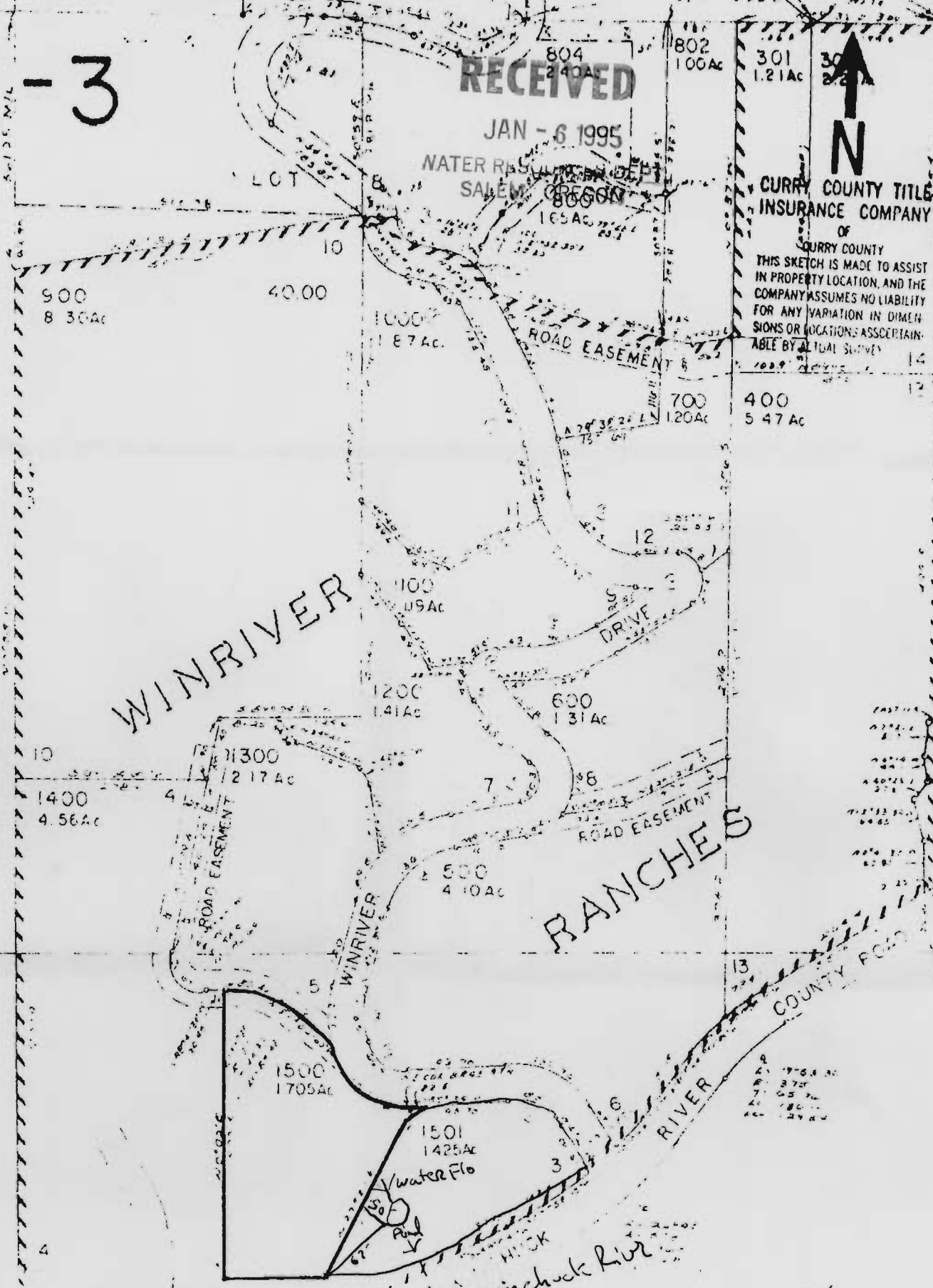
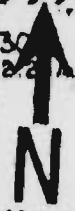
RECEIVED

JAN - 6 1995

WATER RESOURCES DEPT
SALEM, OREGON

CURRY COUNTY TITLE
INSURANCE COMPANY

CURRY COUNTY
THIS SKETCH IS MADE TO ASSIST
IN PROPERTY LOCATION, AND THE
COMPANY ASSUMES NO LIABILITY
FOR ANY VARIATION IN DIMEN-
SIONS OR LOCATIONS ASCERTAIN-
ABLE BY A LITIAL SURVEY



70231

Pond is 35' long & as wide as 15'

"CERTIFICATE NO. _____"

Application No R-76275
Permit No.