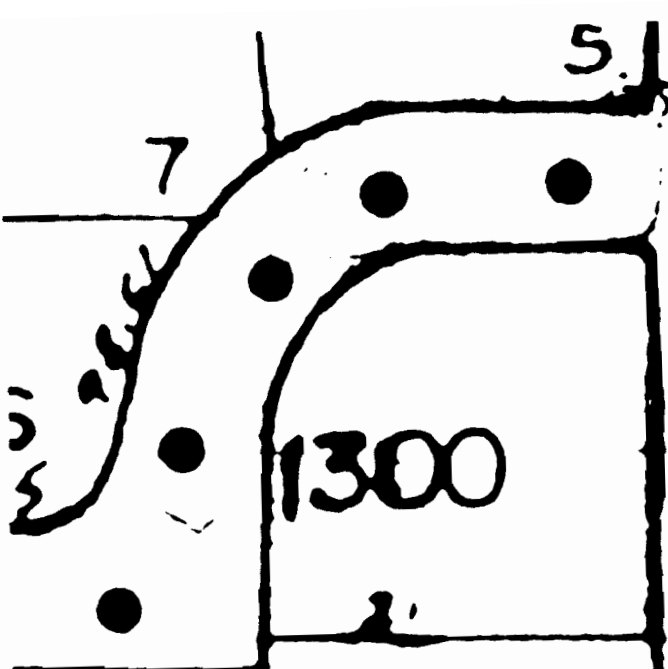


155.76 Permit No. 50334

JAN - 8 1995

SALEM OFFICE



1300

Pond location

1400

28

1500

1600

402.79

1700

3432

38844

3300

14.24

3100

3003

1.00 AC

294.40

148.00

3001

4.08 AC

425.5

684.4

solely for the purpose of
said purposes and the company
for the purpose of a gift on
this matter and that of any
and all persons concerned by



SECTION 34 DIVISION 589°46'E S
DISTANCE 2158.5' from NW
CORNER OF MAIN PH. 779-2811 MEDICAL CENTER

81W35
1"=400'

- 38-1W34

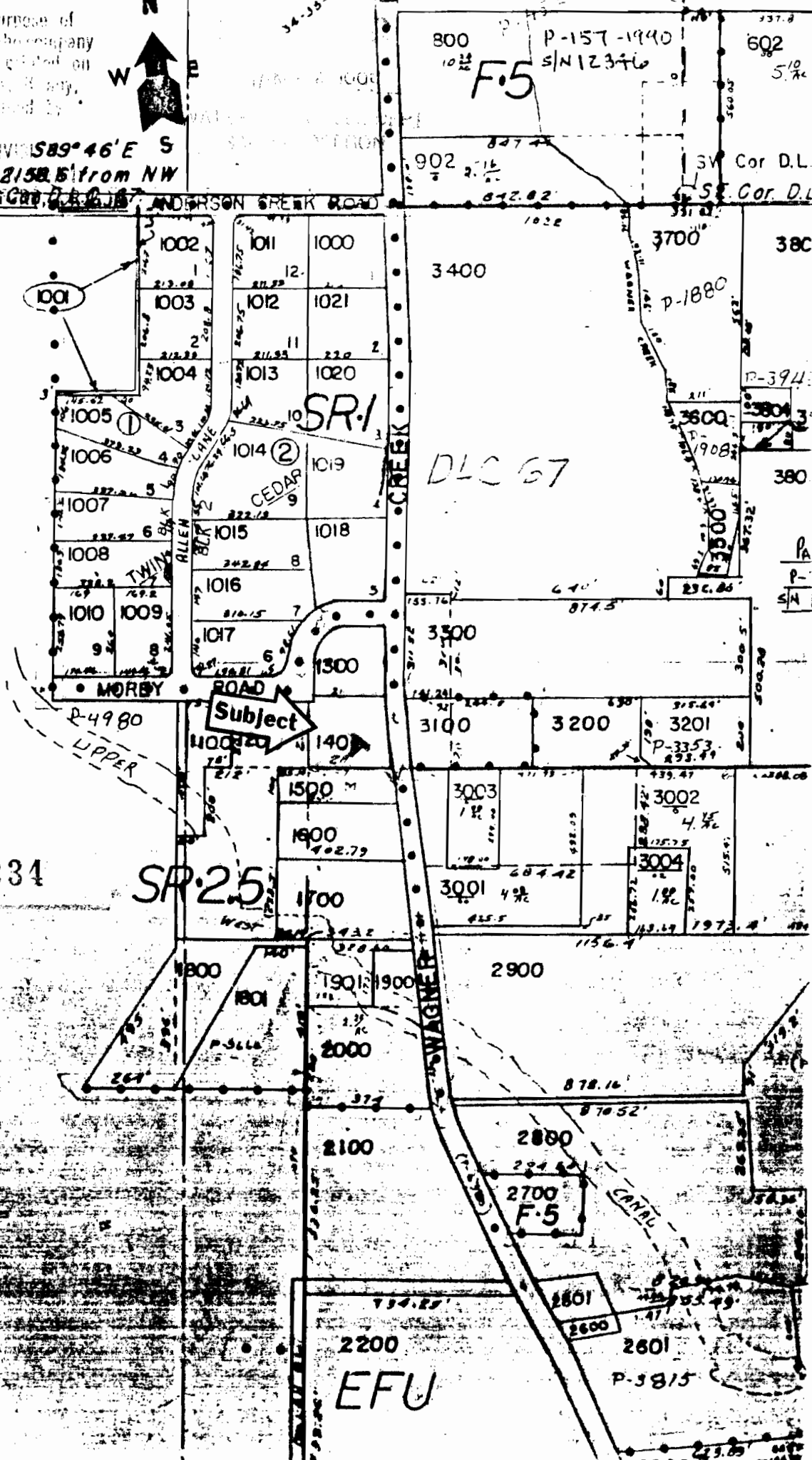
70234

SR-25

SR-1

DLC 67

EFU



CONTINUED ON...