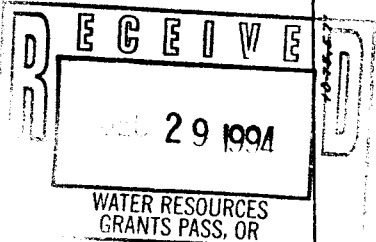
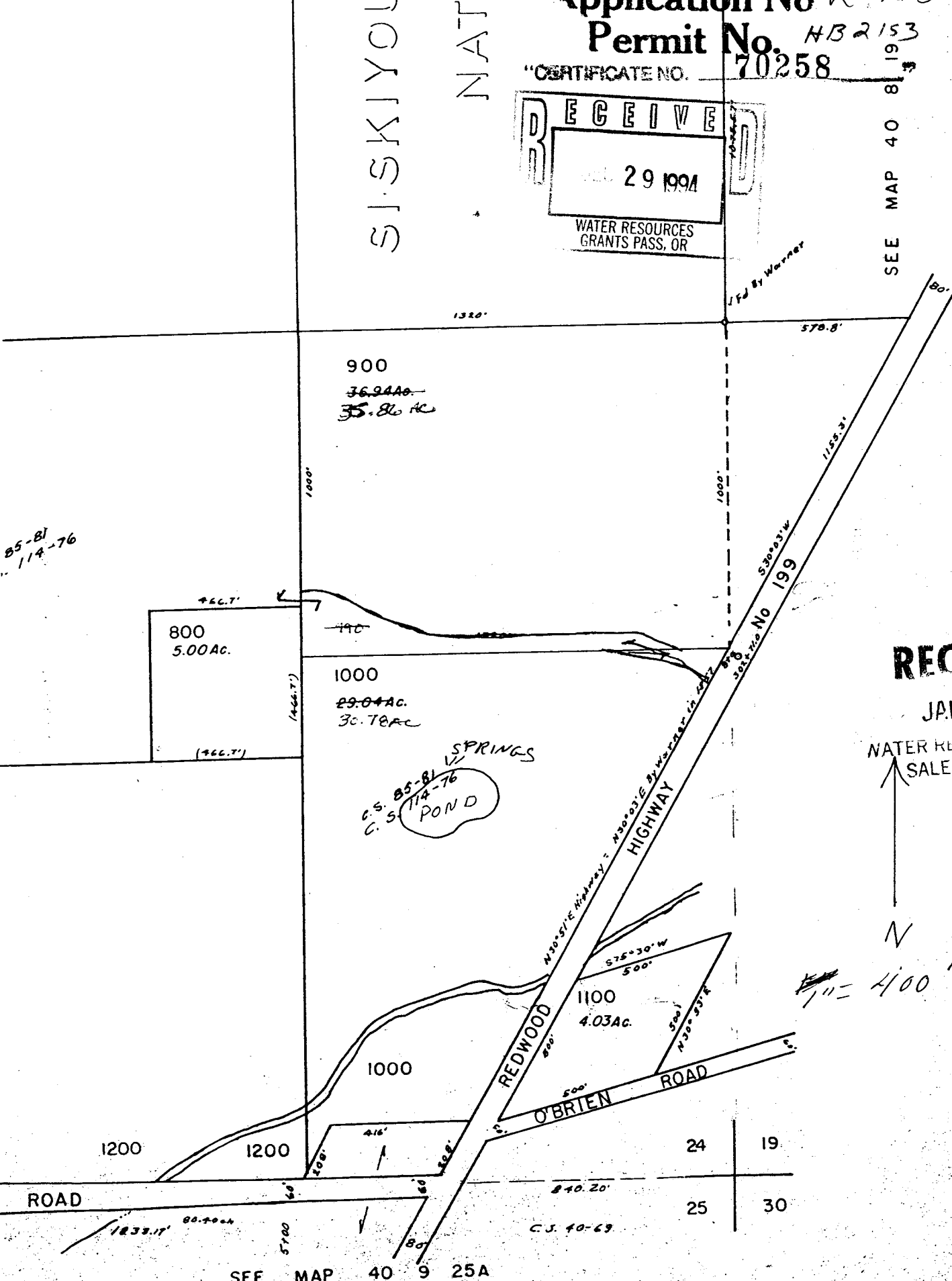


WISKIYONNATI



SEE MAP 40 8 19



B5-81
114-76

800
5.00 AC.
766.7'
1466.7'

900
~~36.24 AC.~~
35.86 AC

1000
29.04 AC.
30.78 AC

SPRINGS
POND
C.S. B5-81
114-76
C.S.

REDWOOD HIGHWAY
O'BRIEN ROAD
1100
4.03 AC.
575°30'W
500'
500'
N30°51'E

1200 ROAD
1200
416'
400'
5700
840.20'
C.S. 40-69
24 19
25 30

SEE MAP 40 9 25A

RECEIVED

JAN - 3 1995

WATER RESOURCES DIV
SALEM, OREGON

N

1" = 400'

740S 9W 24