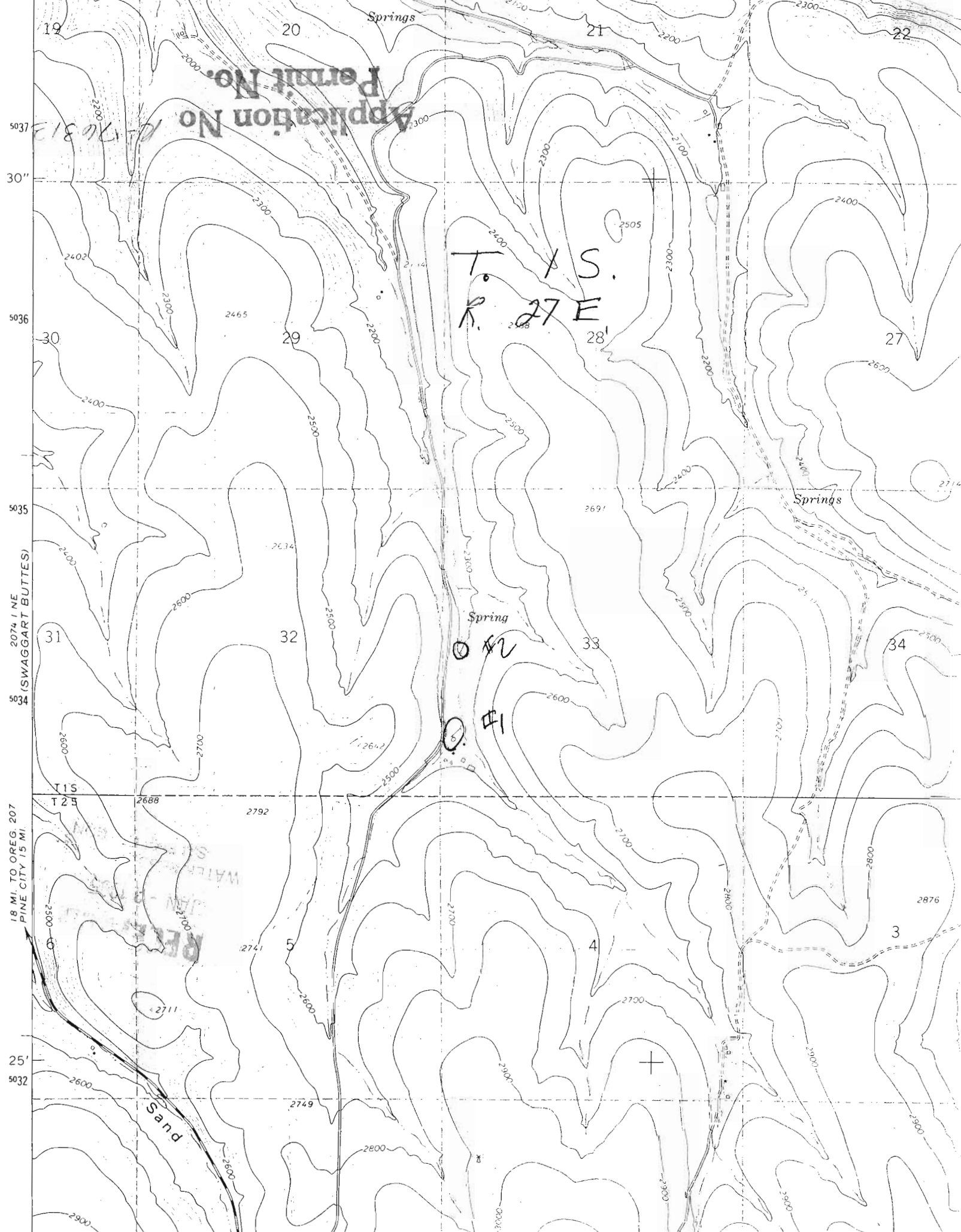


Application No. 176813
Permit No.

T X S.
R. 27 E
28'



207 1/4 (NE SWAGGART BUTTES)

18 MI. TO OREG. 207 PINE CITY 15 MI.

5032

5035

5036

5037

19

20

21

22

30

29

27

31

32

33

34

25'

T1S
T2S

5034

5035

5036

5037

19

20

21

22

30

29

27

31

32

33

34

25'

T1S
T2S

5034

5035

5036

5037

19

20

21

22

30

29

27

31

32

33

34

25'

T1S
T2S

5034

5035

5036

5037

19

20

21

22

30

29

27

31

32

33

34

25'

T1S
T2S

5034

5035

5036

5037

19

20

21

22

30

29

27

31

32

33

34

25'

T1S
T2S

5034

5035

5036

5037

19

20

21

22

30

29

27

31

32

33

34

25'

T1S
T2S

5034

5035

5036

5037

19

20

21

22

30

29

27

31

32

33

34

25'

T1S
T2S

5034

5035

5036

5037

19

20

21

22

30

29

27

31

32

33

34

25'

T1S
T2S

5034

5035

5036

5037

19

20

21

22

30

29

27

31

32

33

34

25'

T1S
T2S

5034

5035

5036

5037

19

20

21

22

30

29

27

31

32

33

34

25'

T1S
T2S

5034

5035

5036

5037

19

20

21

22

30

29

27

31

32

33

34

25'

T1S
T2S

5034

5035

5036

5037

19

20

21

22

30

29

27

31

32

33

34

25'

T1S
T2S

5034

5035

5036

5037

19

20

21

22

30

29

27

31

32

33

34

25'

T1S
T2S

5034

5035

5036

5037

19

20

21

22

30

29

27

31

32

33

34

25'

T1S
T2S

5034

5035

5036

5037

19

20

21

22

30

29

27

31

32

33

34

25'

T1S
T2S

5034

5035

5036

5037

19

20

21

22

30

29

27

31

32

33

34

25'

T1S
T2S

5034

5035

5036

5037

19

20

21

22

30

29

27

31

32

33

34

25'

T1S
T2S

5034

5035

5036

5037

19

20

21

22

30

29

27

31

32

33

34

25'

T1S
T2S

5034

5035

5036

5037

19

20

21

22

30

29

27

31

32

33

34

25'

T1S
T2S

5034

5035

5036

5037

19

20

21

22

30

29

27

31

32

33

34

25'

T1S
T2S

5034

5035

5036

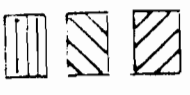
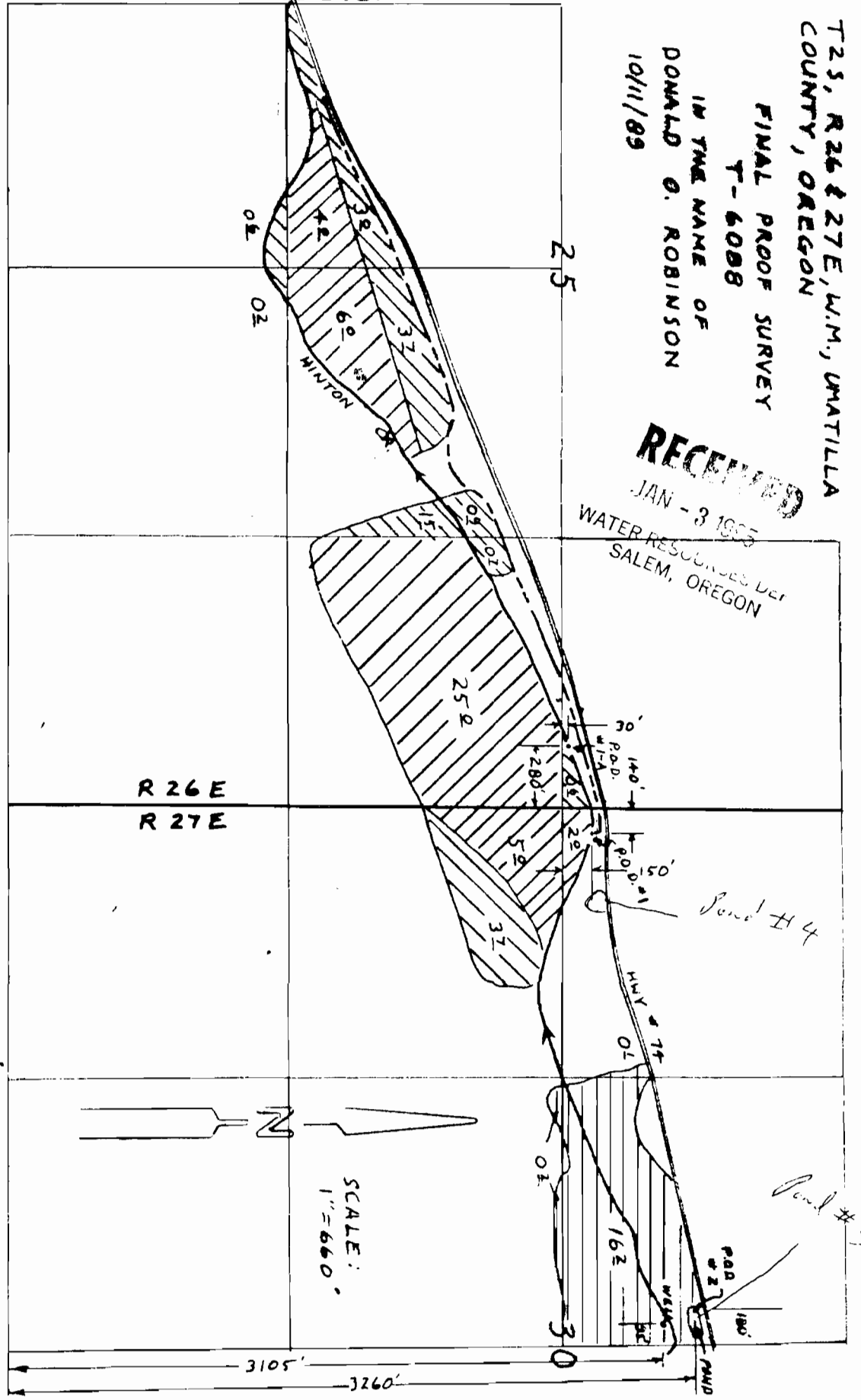
5037

Application No. R-76314
 Permit No.

T2S, R26 & 27E, W.M., UMATILLA
 COUNTY, OREGON

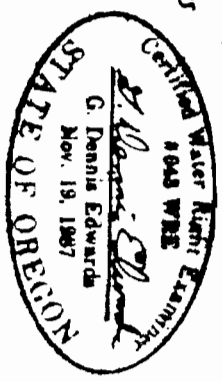
FINAL PROOF SURVEY
 T-6008
 IN THE NAME OF
 DONALD O. ROBINSON
 10/11/89

RECEIVED
 JAN - 3 1995
 WATER RESOURCES DEPT
 SALEM, OREGON



1893 W.R. cert. # 218 V.1, P.73
 Applied for RIGHTS FROM P.O.D.'s 1 & 1-A
 Applied for RIGHTS FROM PAD 2

THIS MAP IS FOR IDENTIFYING
 THE LOCATION OF WATER RIGHTS
 ONLY AND IS NOT INTENDED
 TO SHOW PROPERTY LINES
 OR DIMENSIONS



EDWARDS SURVEYING
 P.O. BOX 763
 HERMISTON, OR. 97038
 507-3336