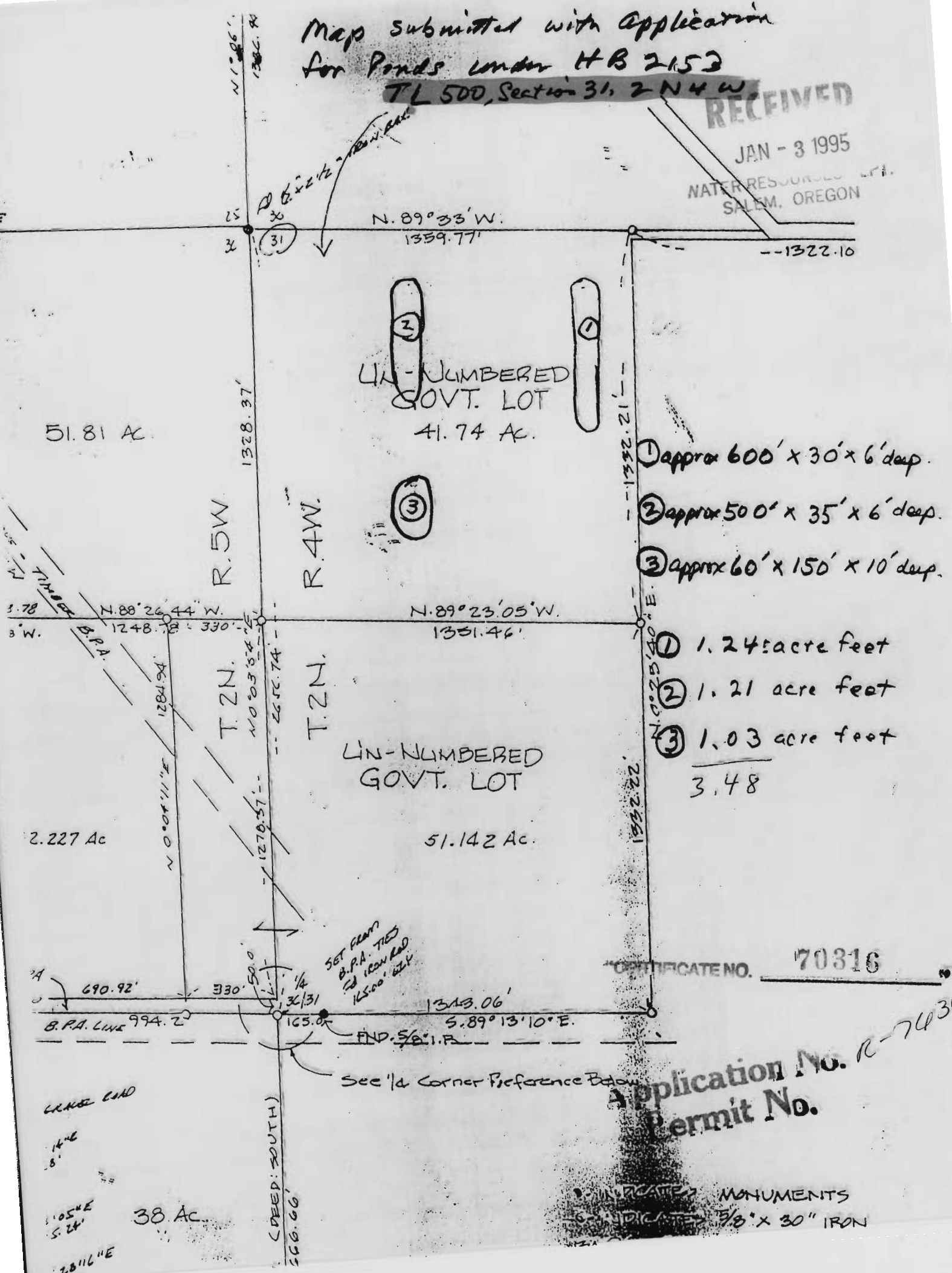


Map submitted with Application
for Ponds under HB 2153

TL 500, Section 31, 2 N 4 W

RECEIVED

JAN - 3 1995
WATER RESOURCES DIV.
SALEM, OREGON



- ① approx 600' x 30' x 6' deep.
- ② approx 500' x 35' x 6' deep.
- ③ approx 60' x 150' x 10' deep.

- ① 1.24 acre feet
 - ② 1.21 acre feet
 - ③ 1.03 acre feet
- 3.48

CERTIFICATE NO. 70316

Application No. R-7436
Permit No.

• INDICATES MONUMENTS
• INDICATES 5/8" x 30" IRON

SET PLANT
B.P.A. TIES
TO IRON PIPES
145.00' DIST

See 1/4 Corner Preference Below

38 Ac

(CREEP: SOUTH)
566.66'

CRANE ROAD
8.14' E
105' E
5.24'
28116' E