

SECTION 22 T.27S. R.7W. W.M.  
DOUGLAS COUNTY

REVISED ON  
1-29-93

27 7 22

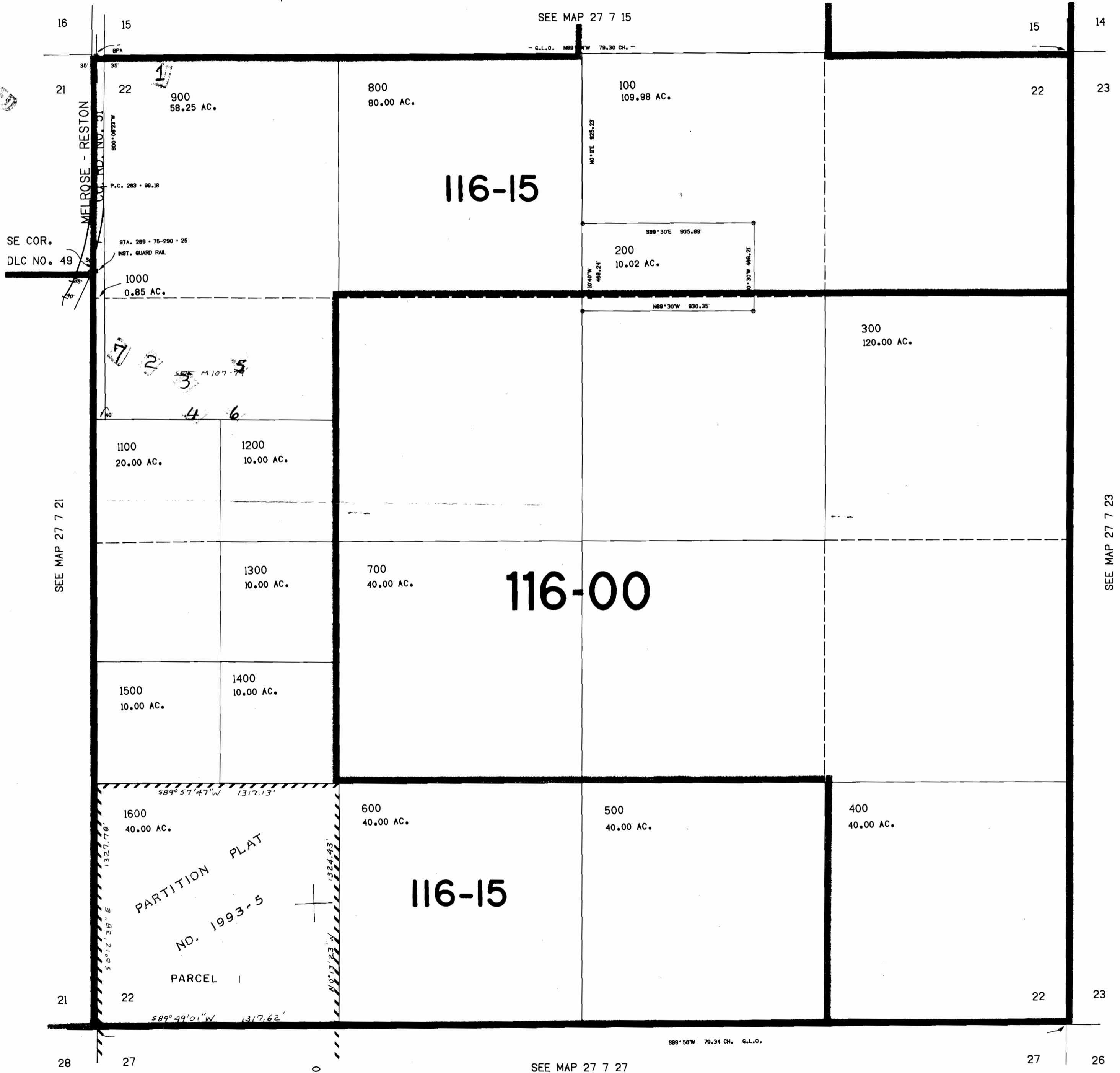
THIS MAP WAS PREPARED FOR  
ASSESSMENT PURPOSE ONLY.

CERTIFICATE 70823

1"=400'

Application No. R-76372  
Permit No.

JAN - 3 1995  
SALES & REG. DEPT.  
SALEM, OREGON



SEE MAP 27 7 21

SEE MAP 27 7 23

SEE MAP 27 7 27

574.000

27 7 22