

SECTION 9 T.22S. R.6W. W.M.  
DOUGLAS COUNTY

REVISED ON  
8-3-93

22 6 9

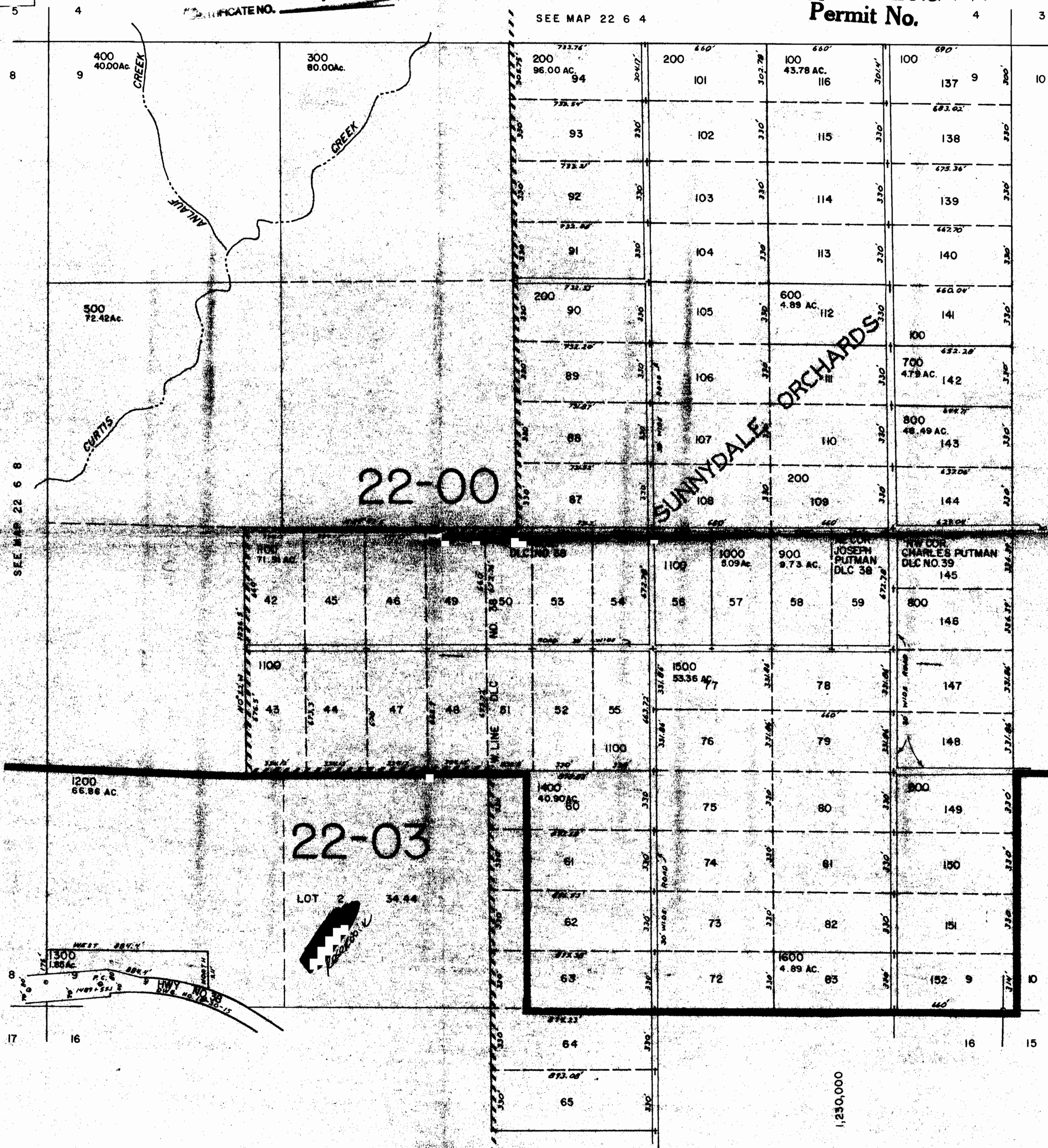
Application No. R-76385  
Permit No. 4

THIS MAP WAS PREPARED FOR  
ASSESSMENT PURPOSE ONLY.

70336

1"=400'

SEE MAP 22 6 4



22-00

22-03

LOT 2  
34.44

SUNNYDALE ORCHARDS

REC  
JAN - 3 1995  
WATER RIGHTS  
SALEM, OREGON

SEE MAP 22 6 8

SEE MAP 22 6 10

SEE MAP 22 6 16

742,000

1,250,000

22 6 9