

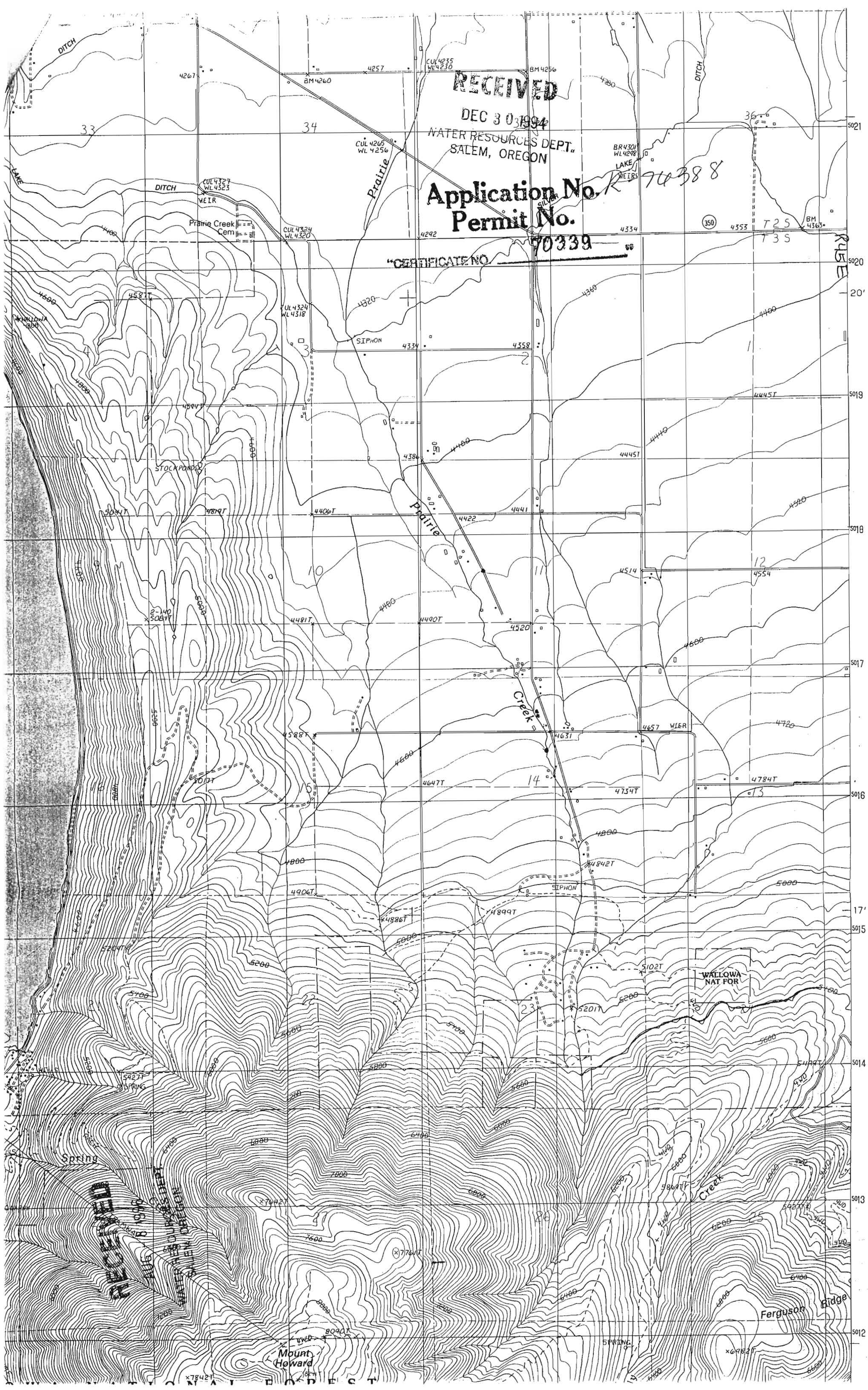
RECEIVED

DEC 30 1994

WATER RESOURCES DEPT.
SALEM, OREGON

Application No. *R 74388*
Permit No. *70339*

CERTIFICATE NO. *70339*



RECEIVED
WATER RESOURCES DEPT.
SALEM, OREGON

Mount
Howard

Ferguson
Bridge

WALLOWA
NAT FOR

Prairie Creek
Cem

Stock Pond

Prairie

Prairie

Creek

Creek

RUE

20'

5018

5017

5016

17'

5015

5014

5013

5012

33

34

36

10

11

14

23

24

4267

4257

4230

4256

4280

5021

CUL 4265
WL 4256

BR 4301
WL 4298
LAKE
WEIRS

CUL 4327
WL 4323

CUL 4324
WL 4320

4292

4334

350

4353

BM 4365

5020

CUL 4324
WL 4318

4320

SIPHON

4334

4358

5019

5041T

4894T

4406T

4386

4400

4422

4441

4445T

5018

5084T

5084T

4481T

4480

4490T

4520

4514

4554

5017

4481T

4480

4490T

4520

4514

4554

5016

4588T

4600

4647T

4631

4657

4657

5016

4800

4906T

4886T

4899T

4842T

4842T

17'

4906T

4886T

4899T

4842T

4842T

4842T

5015

5100

5204T

5200

5200

5200

5102T

5201T

5200

5014

5100

5204T

5200

5200

5200

5102T

5201T

5200

5014

5100

5204T

5200

5200

5200

5102T

5201T

5200

5014

5100

5204T

5200

5200

5200

5102T

5201T

5200

5013

5100

5204T

5200

5200

5200

5102T

5201T

5200

5013

5100

5204T

5200

5200

5200

5102T

5201T

5200

5012

5100

5204T

5200

5200

5200

5102T

5201T

5200

5012

5100

5204T

5200

5200

5200

5102T

5201T

5200

5012

5100

5204T

5200

5200

5200

5102T

5201T

5200

5012