

SEC. 24 T.7S R.4W WM

POLK COUNTY

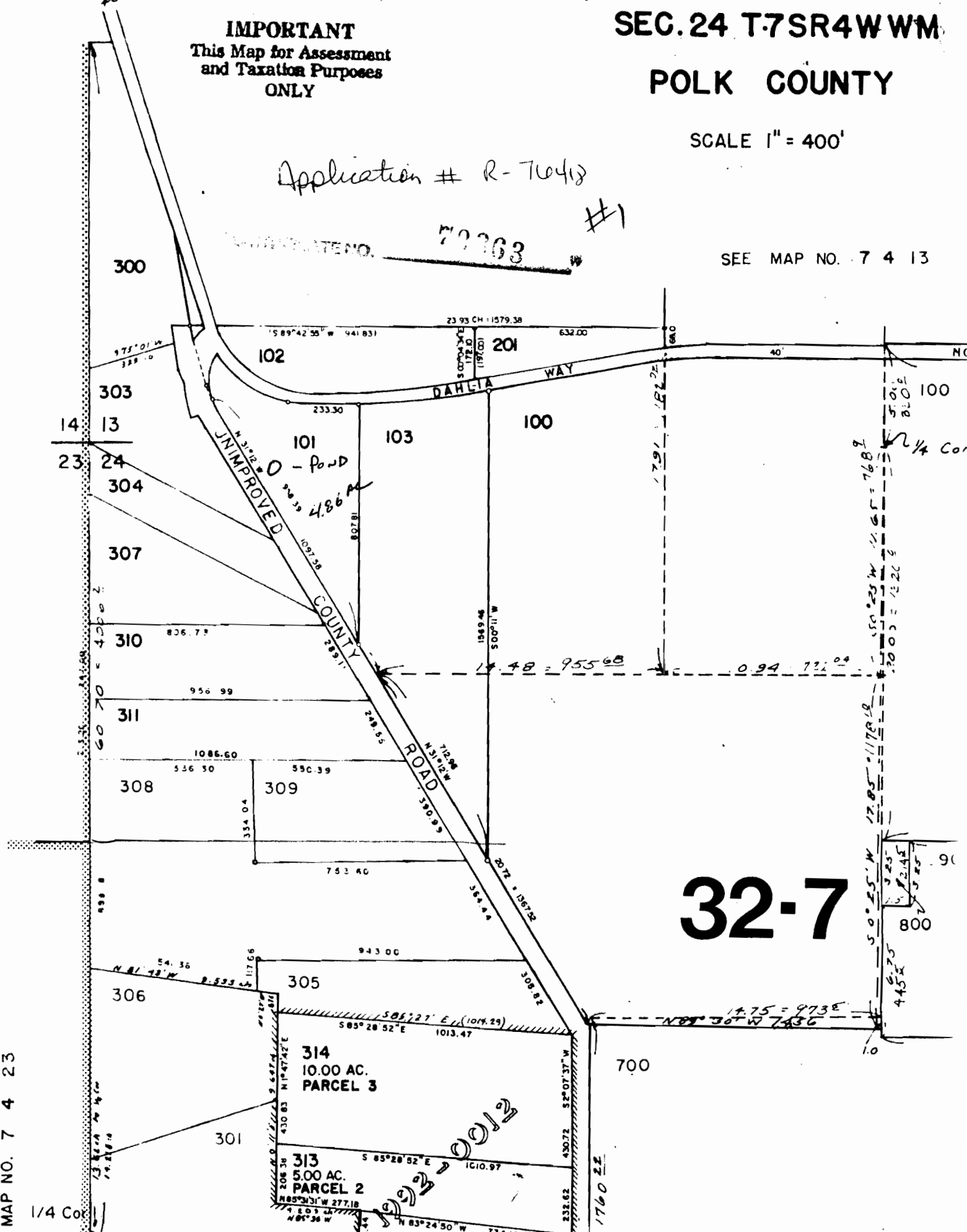
SCALE 1" = 400'

IMPORTANT
This Map for Assessment
and Taxation Purposes
ONLY

Application # R-76413

72263 #1

SEE MAP NO. 7 4 13



32-7

E MAP NO. 7 4 23

1/4 Cor

50°25' W 17.85' = 117.18
 3.25
 2.145
 3.45
 800
 90

314
 10.00 AC.
 PARCEL 3

313
 5.00 AC.
 PARCEL 2

32-7-0012

1/4 Cor

1/4 Cor

1/4 Cor

1/4 Cor

1/4 Cor

1/4 Cor

1/4 Cor

1/4 Cor