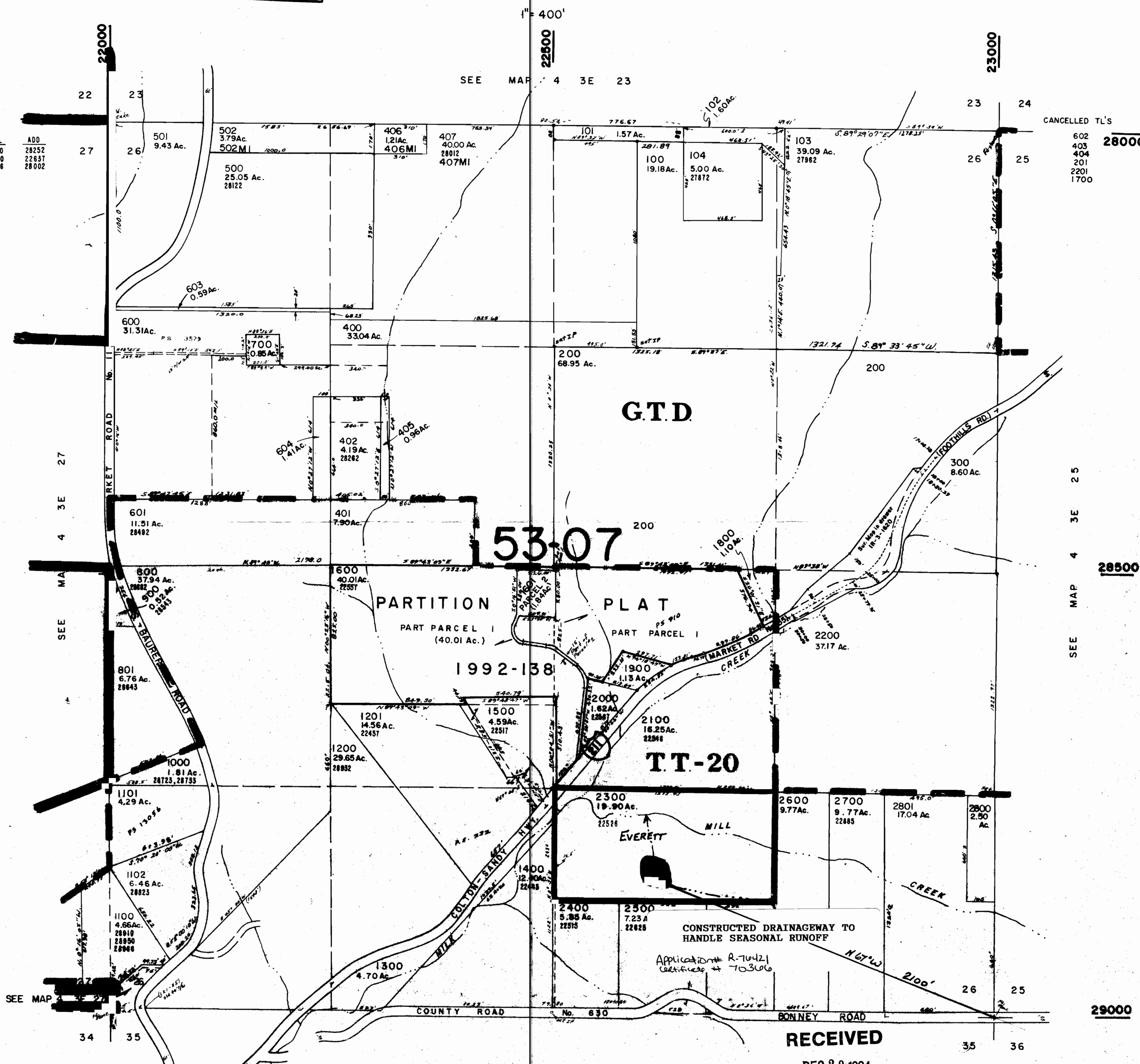


This map was prepared for assessment purpose only.

SECTION 26 T.4S. R.3E. W.M.
CLACKAMAS COUNTY

Application No. R-76421
Permit No. 4 3E 26



CANCELLED TL'S
602 28000
403
404
201
2201
1700

SEE MAP 4 3E 25
28500

29000

153-07

PARTITION PLAT
PART PARCEL I (40.01 Ac.)
1992-138
T.T-20

CONSTRUCTED DRAINAGEWAY TO HANDLE SEASONAL RUNOFF

Application R-76421
Certificate # 70306

RECEIVED

DEC 29 1994

WATER RESOURCES DEPT.
SALEM, OREGON

SEE MAP 4 3E 35

4 3E 26

BOOK 37