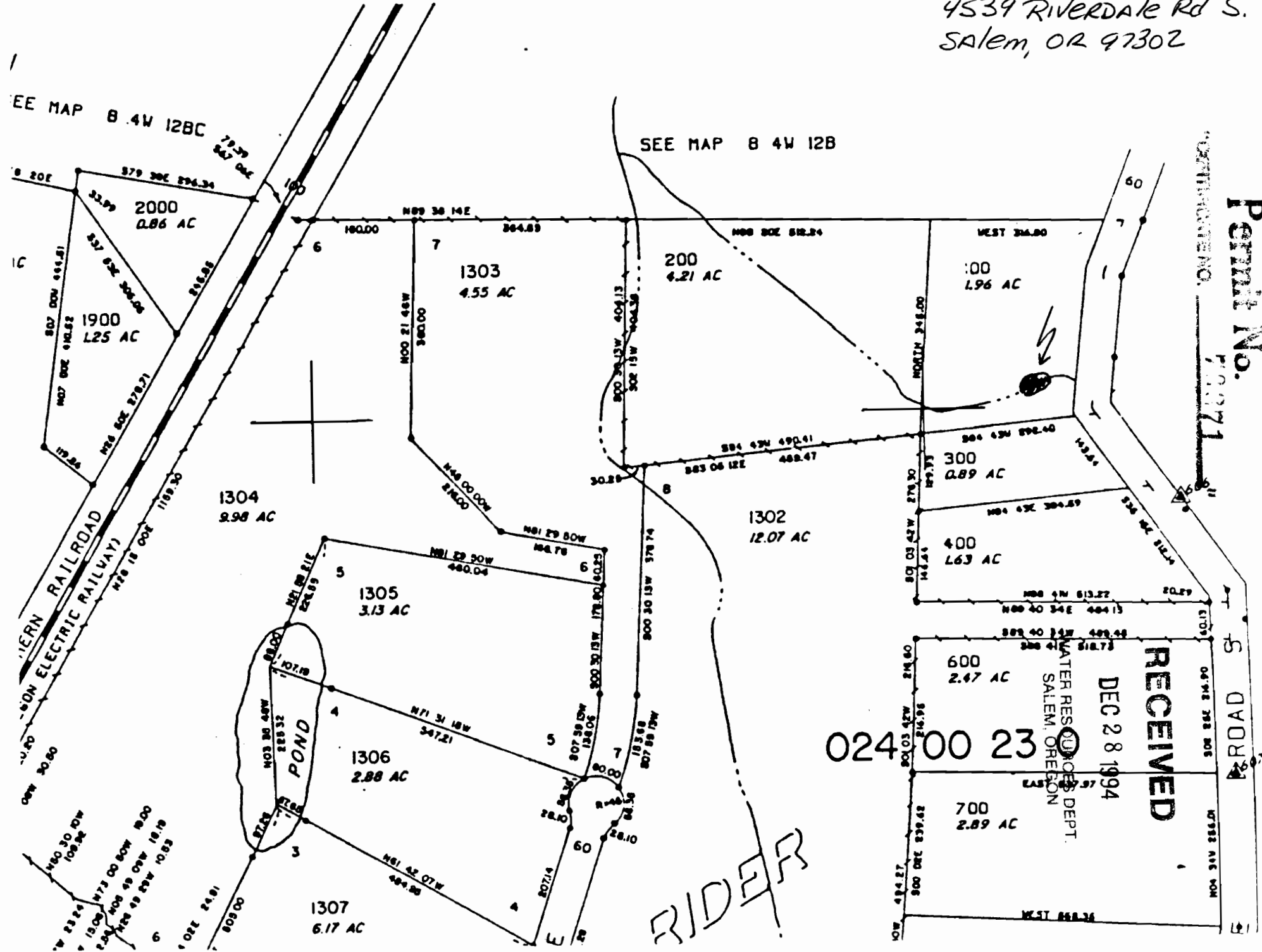


MARION COUNTY, OREGON

DAVID E. ECKERDT
PATRICIA G. ECKERDT
4539 RIVERDALE Rd S.
SALEM, OR 97302



Application No. R-76427
Permit No.

RECEIVED
DEC 28 1994
WATER RESOURCES DEPT.
SALEM, OREGON

024 00 23

5 DAVOR 24

Application No. R-26437
Permit No.

PERMIT NO. 72071

SEE MAP

8 4W 12A

SEE MAP

8 4W 12B

SEE MAP

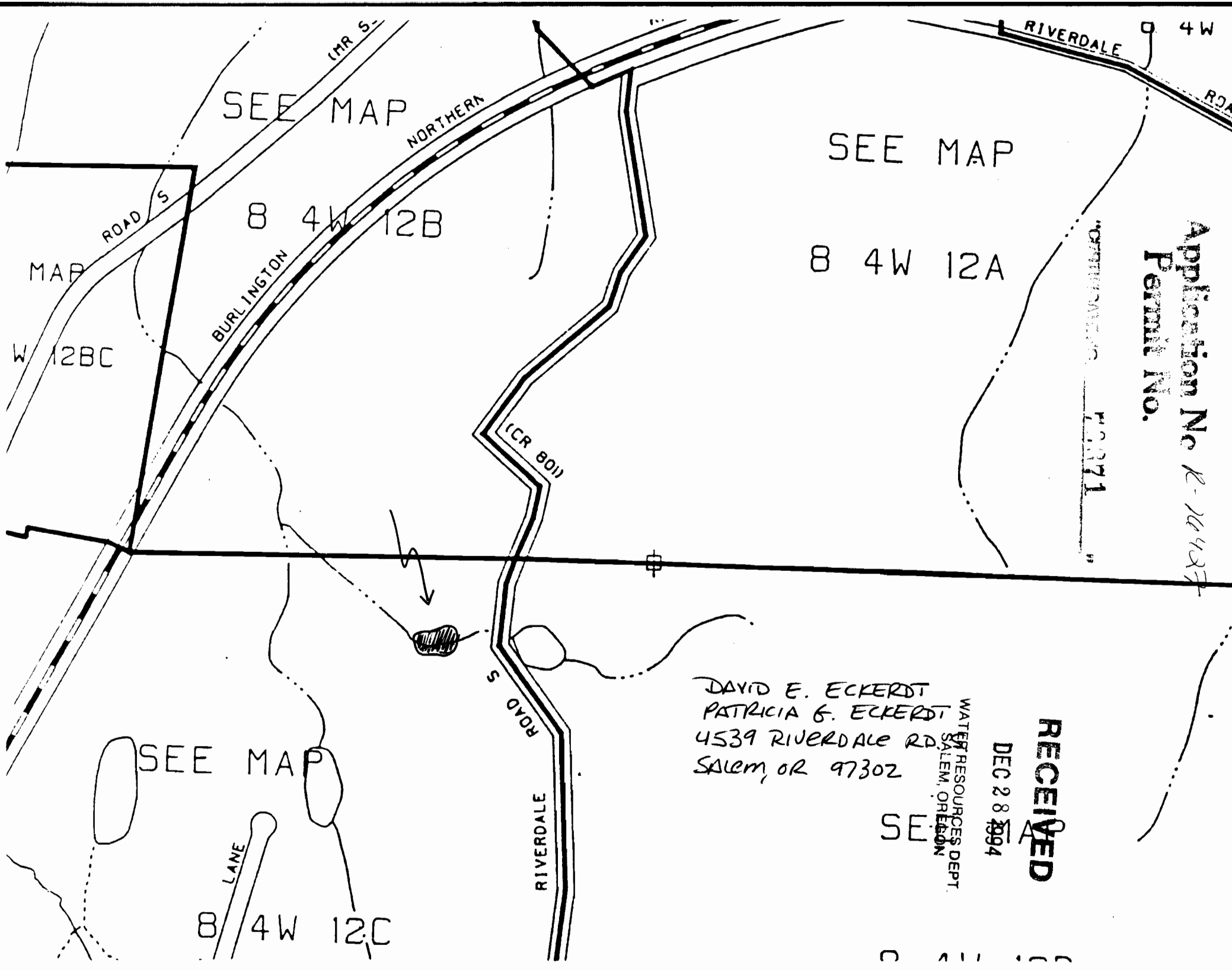
8 4W 12C

DEC 28 1994

RECEIVED

WATER RESOURCES DEPT
SALEM, OREGON

DAVID E. ECKERDT
PATRICIA G. ECKERDT
4539 RIVERDALE RD.
SALEM, OR 97302



SEC.12 TWP.8S. RGE.4W. WM
MARION COUNTY, OREGON

B 4W 12
INDEX

SCALE 1:25000



SEE MAP B 4W 11
FOLK COUNTY

SEE MAP B 4W 10

WILLAMETTE RIVER

SEE MAP
RIVER ROAD S
B 4W 12BC

SEE MAP

B 4W 12B

SEE MAP

B 4W 12C

SEE MAP B 4W 01

RAILROAD

(MR 53)

NORTHERA

BURLINGTON

(CR 80)

ROAD S

RIVERDALE

SEE MAP B 4W 13B

SEE MAP

B 4W 12A

SEE MAP

B 4W 12D

SEE MAP B 4W 13A

RIVER ROAD S

SEE MAP

B 4W 12AA

RIVERDALE

ROAD S

1 6
12 7

SEE MAP B 3W 07B

SEE MAP B 3W 07B

WATER RESOURCES DEPT.
SALEM, OREGON

DEC 28 1994

RECEIVED



1"=400'
15-OCT-85

INDEX

70071

Application No. K-76427
Permit No.

11 12
14 13