

SCALE 1:9600



Application No. R-76450  
Permit No.

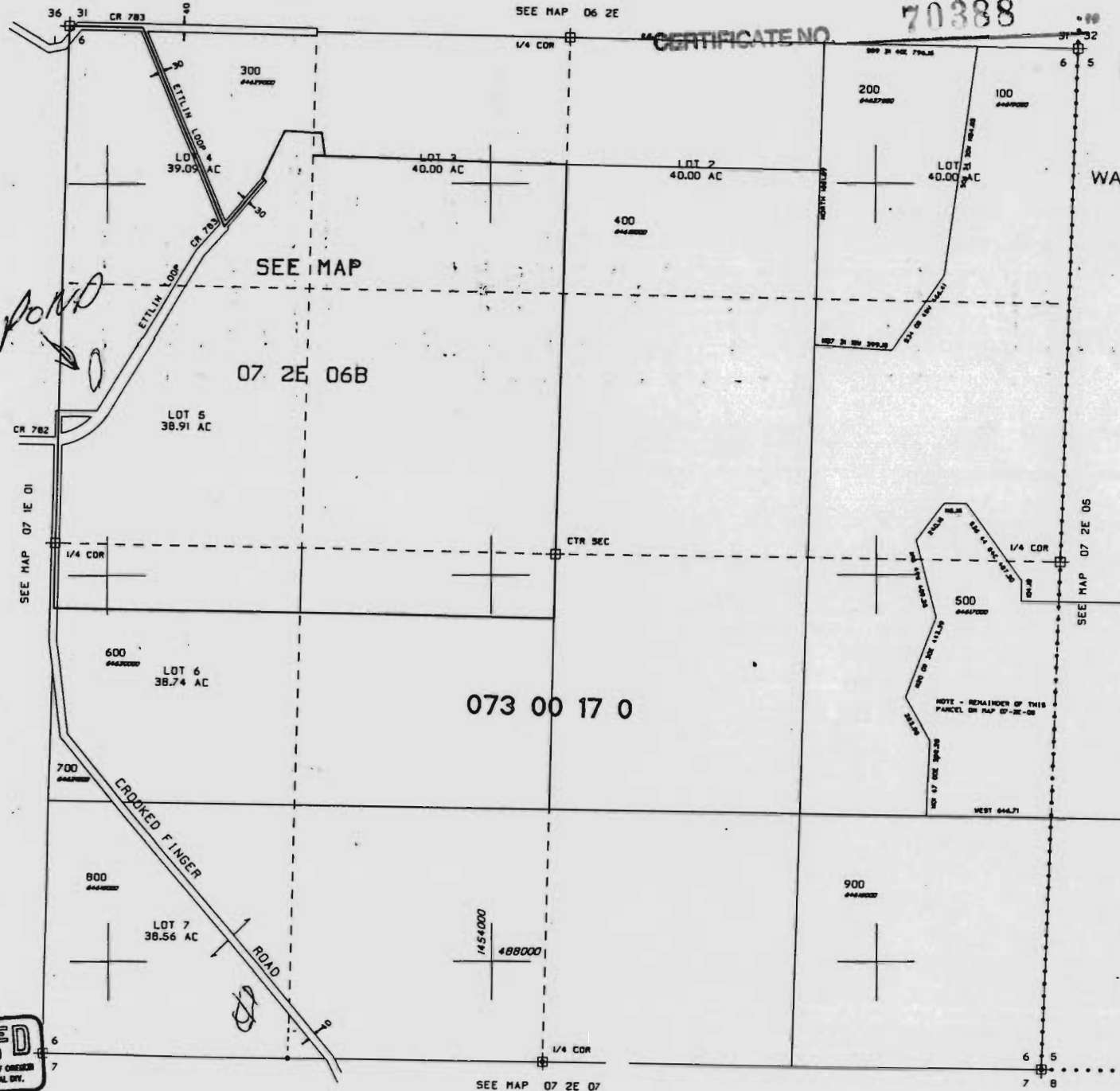
70388

CERTIFICATE NO.

RECEIVED

DEC 28 1994

WATER RESOURCES DEP  
SALEM, OREGON



RECEIVED  
AU. 389  
DEPT. OF REVENUE, STATE OF OREGON  
ASSESSMENT & APPRAISAL DIV.