

DEC 28 1994

WATER RESOURCES DIVISION
SALEM, OREGON

SECTION 36 T.4S. R.3E. W.M.

CLACKAMAS COUNTY

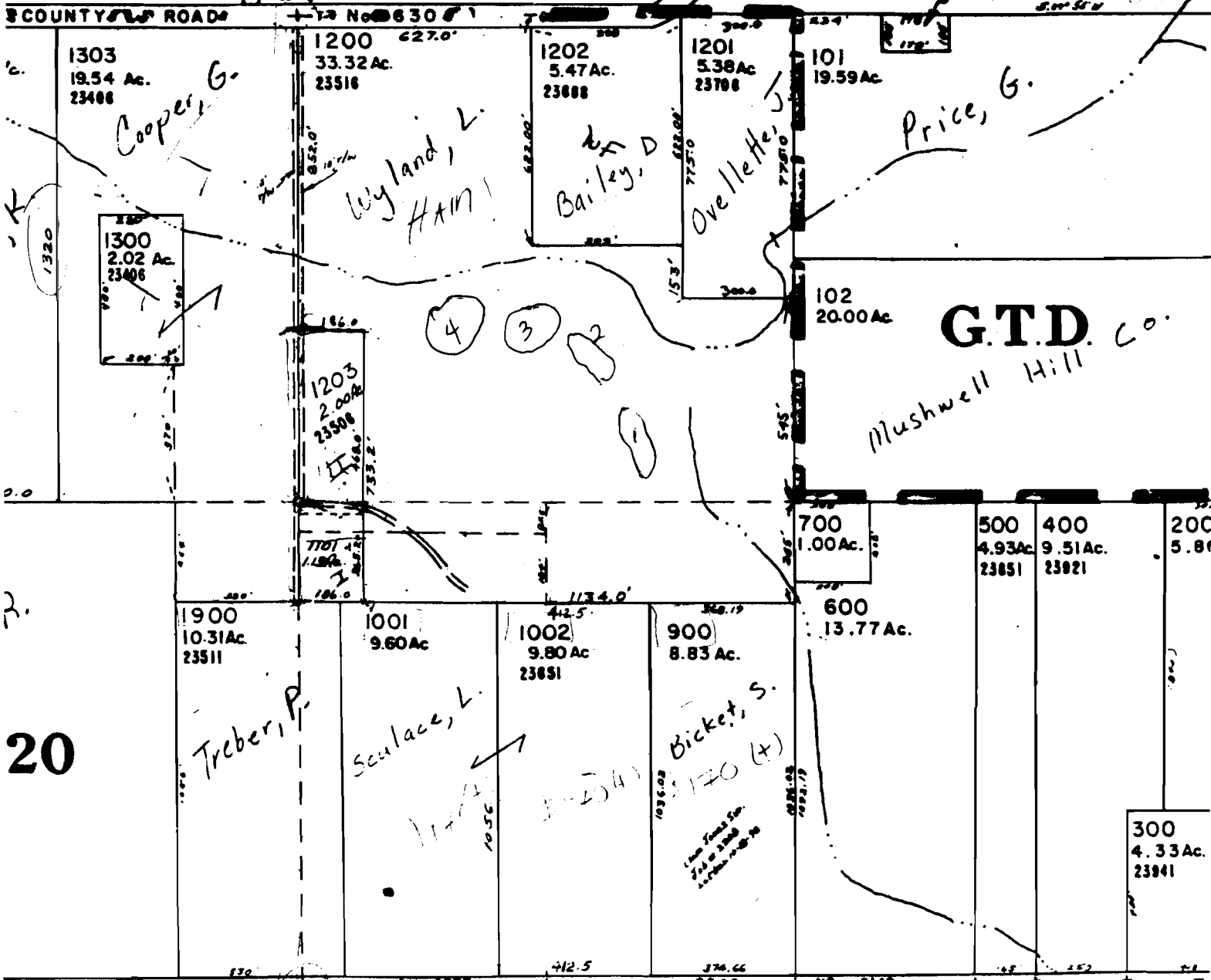
Lock Box
Combo
SPI

1" = 400'
23500

SEE MAP 4 3E 25

CERTIFICATE NO. 408

100
0.41 Ac.
23708



53-07

2000
19.54 Ac.

2400
38.66 Ac.
28688

2401
9.70 Ac.
23702

2500
9.85 Ac.
23882

2600
5.20 Ac.
23832

23704

R.

Application No. *K 26972*
Permit No.



June 1990 Flight . 4T T4S, R3E sec. 36 NE 1/4