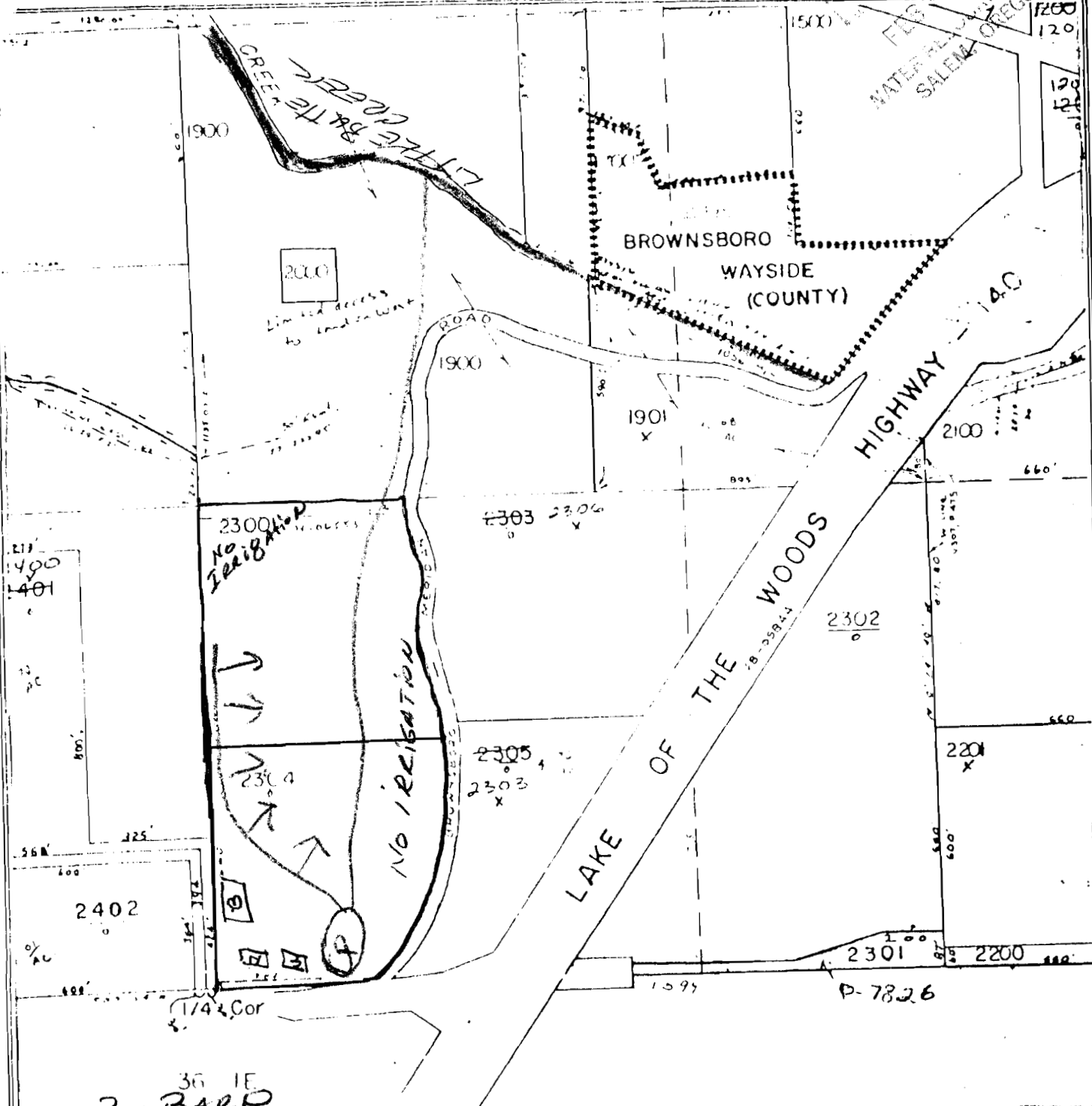


CRATER TITLE INSURANCE CO.

FILED  
JUN 11 1996  
WATERBURY COUNTY CLERK  
SALEM, OREGON



B = BARD  
 H = HOUSE  
 G = GARAGE  
 P = POND  
 → Irrigation 7 to 8 ACRES  
 — YR AROUND CREEK

TWN 36 R 1E SEC 5

THIS SKETCH IS FOR LOCATION PURPOSES ONLY. NUMBERS ON SKETCH ARE COMPANY NUMBERS AND NO LIABILITY IS ASSUMED FOR VARIATIONS DISCLOSED BY SURVEY OR COUNTY RECORDS.

CRATER TITLE INSURANCE CO.  
 CONTRACT PMTS . 778-4552  
 CLOSING ESCROW . 778-4559  
 TITLE & MAPS . 778-4571

No Final Proof Map available

No Permit Map available