

This map was prepared for
informational purposes only.

Application No. R-90583
Permit No. 27 7 9

SECTION 9 T.27S. R. 7 W. W.M.
DOUGLAS COUNTY

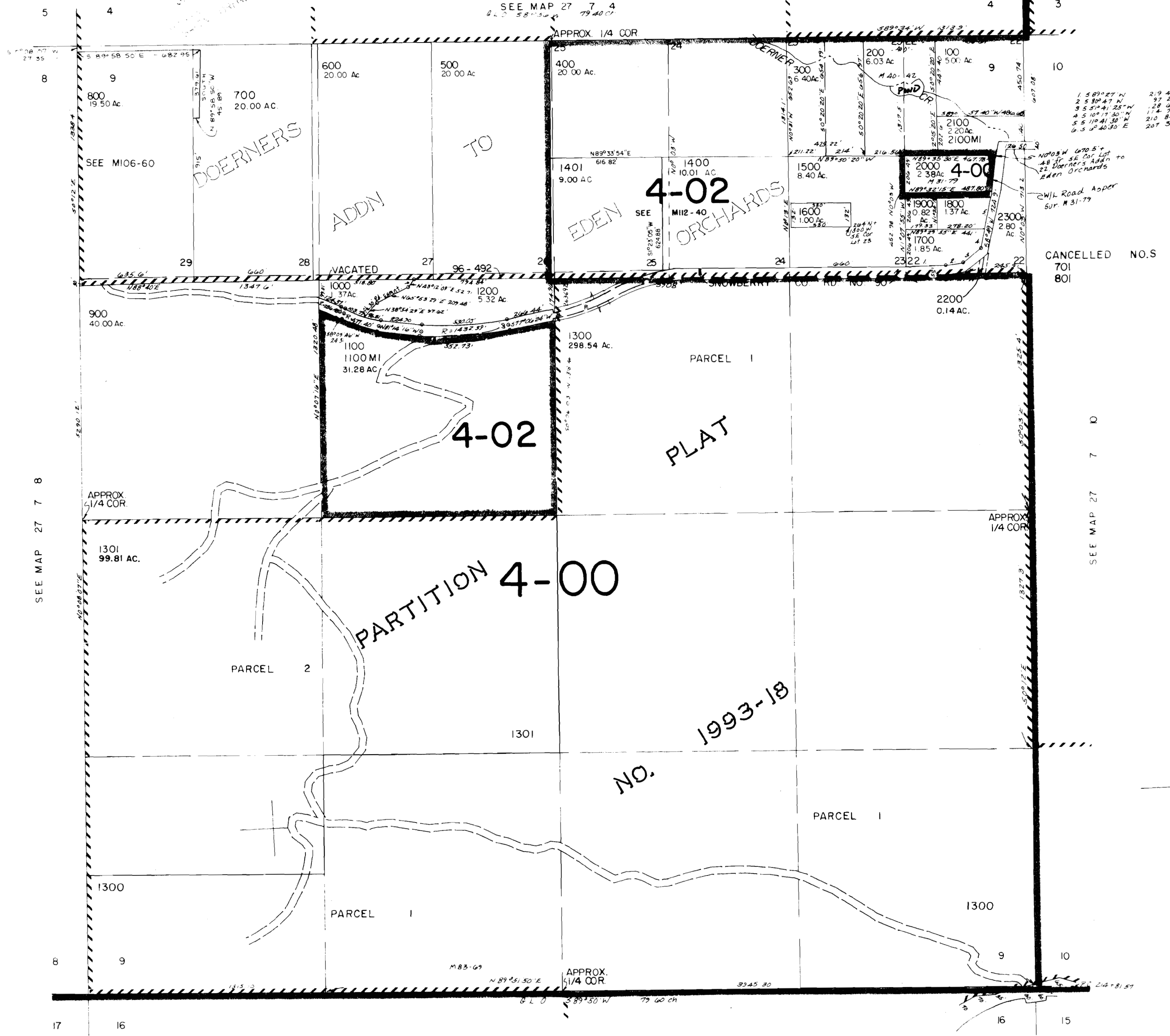
REVISED ON
8-4-94

70513

1" = 400'

SEE MAP 27 7 4
B.L.O. 58°50' W 79.40' ch

APPROX. 1/4 COR



SEE MAP 27 7 8

SEE MAP 27 7 10

SEE MAP 27 7 16

27 7 9

195500

No Final Proof Map available

No Permit Map available