

SECTION 22 T.27S. R.7W. W.M.
DOUGLAS COUNTY

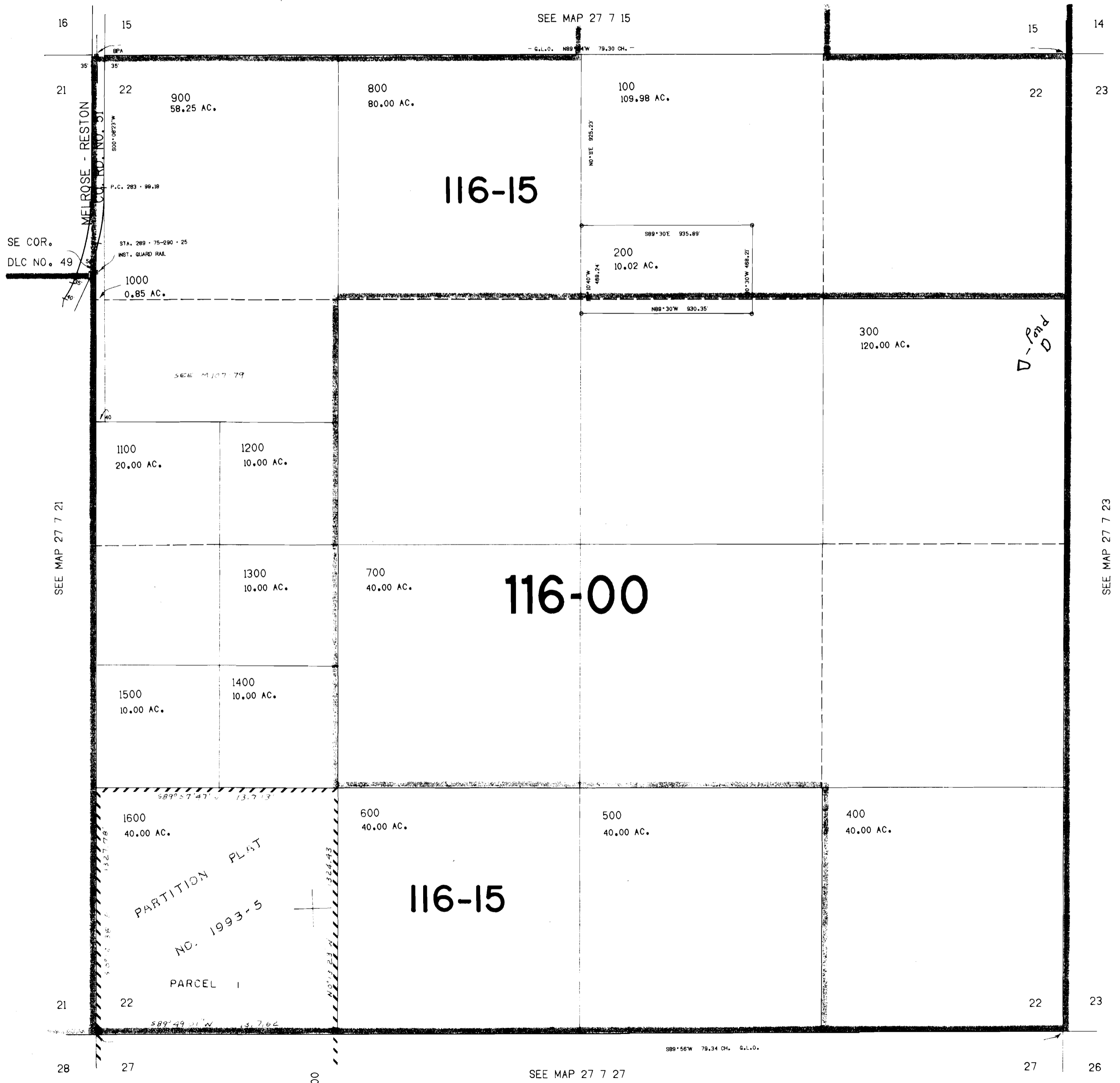
REVISED ON
1-29-93

27 7 22

THIS MAP WAS PREPARED FOR
ASSESSMENT PURPOSE ONLY.

70525

1"=400'



D-Part
D

574.000

27 7 22

SECTION 23 T.27S. R.7W. W.M.
DOUGLAS COUNTY

27 7 23

THIS MAP WAS PREPARED FOR
ASSESSMENT PURPOSE ONLY.

70525

1"=400'

CERTIFICATE NO.

15

14

Ralph Hoffman

SEE MAP 27 7 14

14

13

G.L.O. S89°44'W 79.85 CH.

22

23

200
40.00 AC.

100
160.00 AC.

23

24

300
300 MI
40.00 AC.

Pond B

Pond C

Pond A

400
80.00 AC.

4-00

SEE MAP 27 7 22

500
160.00 AC.

600
160.00 AC.

SEE MAP 27 7 24

4-34

22

23

23

24

DEC 30 1994
WATER RESOURCES DEPT.
SALEM, OREGON

573.000

27

26

G.L.O. WEST 80.15 CH.

SEE MAP 27 7 26

26

25

200.000

27 7 23

No Final Proof Map available

No Permit Map available