

NW 1/4

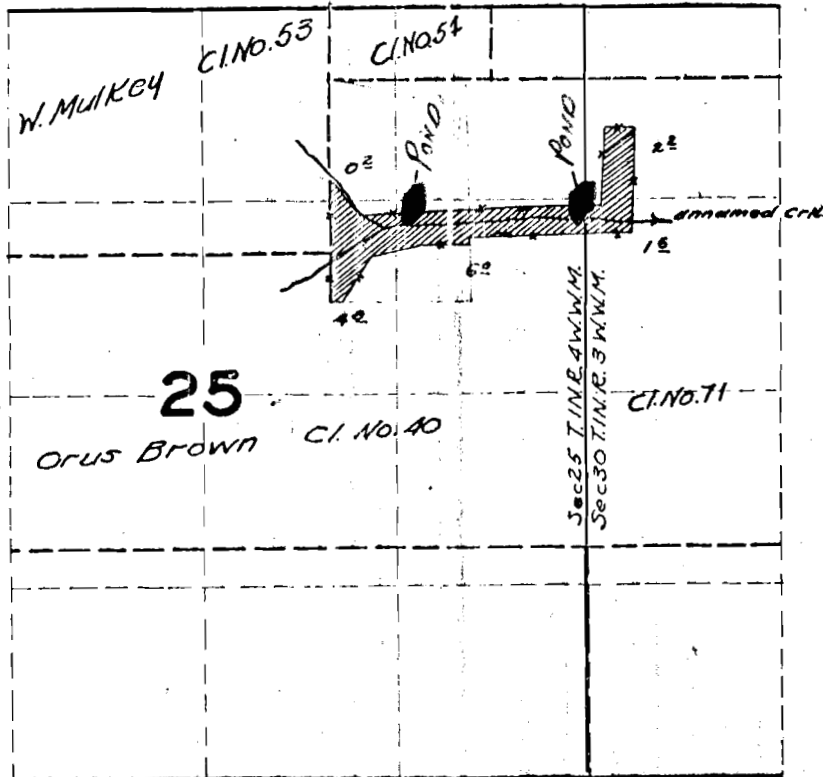
T.I.N.R. 3, 4 W.W.M.

Tax Lot 100

RECEIVED

JAN - 3 1995

WATER RESOURCES DIVISION
SALEM, OREGON



Application No. R-76609
Permit No.

FINAL PROOF SURVEY
UNDER

Application No. 23223 Permit No. 18900
IN NAME OF

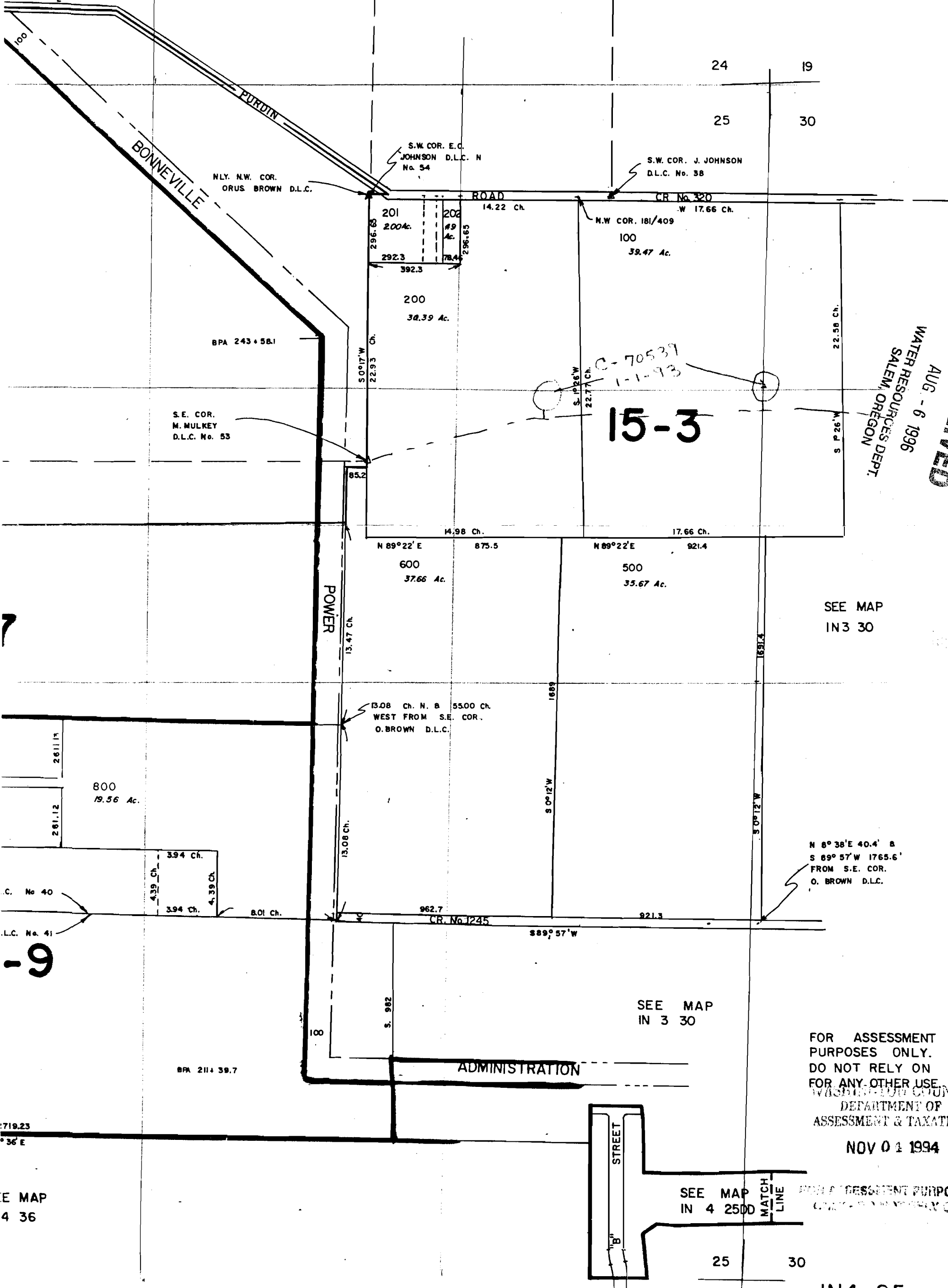
GEORGE SPIESSCHLERT & F. A. VANAKEN

Surveyed 4 / 23 19 52, by H. L. COFFMAN

SEE MAP
IN4 24

T.L. 300 CANCELLED
" 400 "

BPA STA.
265 + 47.9



NLY. N.W. COR.
ORUS BROWN D.L.C.

S.W. COR. E.C.
JOHNSON D.L.C. N
No. 54

S.W. COR. J. JOHNSON
D.L.C. No. 38

S.E. COR.
M. MULKEY
D.L.C. No. 53

N 89°22' E
875.5
600
37.66 Ac.

N 89°22' E
921.4
500
35.67 Ac.

800
19.56 Ac.

13.08 Ch. N. 8 55.00 Ch.
WEST FROM S.E. COR.
O. BROWN D.L.C.

N 8°38'E 40.4' &
S 89°57'W 1765.6'
FROM S.E. COR.
O. BROWN D.L.C.

C. No. 40

D.L.C. No. 41

-9

BPA 211 + 39.7

719.23

°36' E

SEE MAP
IN 4 36

SEE MAP
IN 3 30

FOR ASSESSMENT
PURPOSES ONLY.
DO NOT RELY ON
FOR ANY OTHER USE
WASHINGTON COUNTY
DEPARTMENT OF
ASSESSMENT & TAXATION

NOV 04 1994

SEE MAP
IN 4 2500

MATCH
LINE

FOR ASSESSMENT PURPOSES ONLY

RECEIVED
AUG - 6 1996
WATER RESOURCES DEPT.
SALEM, OREGON