

DO NOT RELY ON
FOR ANY OTHER USE

SEE MAP
IS 3 29

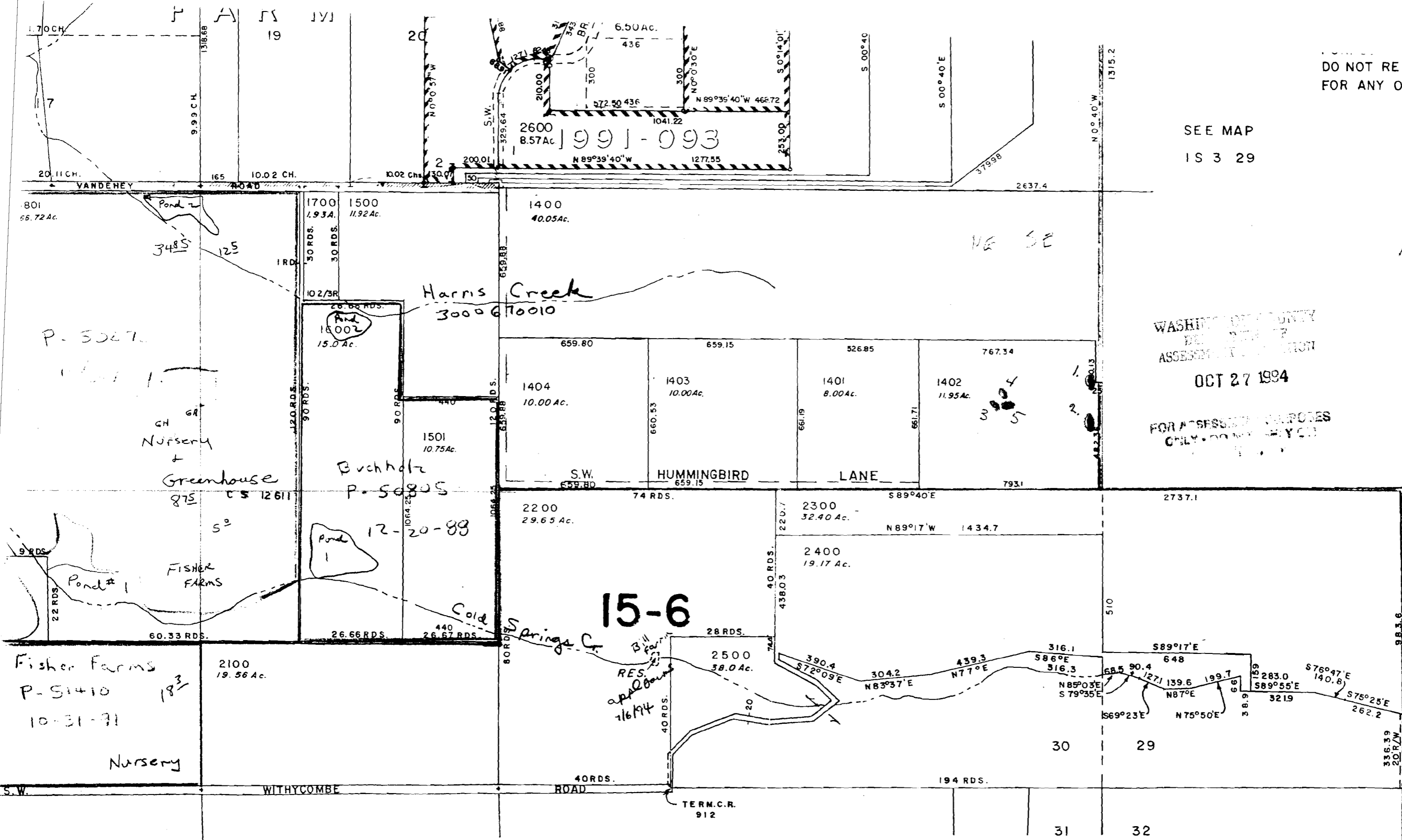
RECEIVED

JAN - 3 1994
WATER RESOURCES
SALEM, OREGON

WASHINGTON COUNTY
DEPT. OF
ASSESSMENT & TAXATION

OCT 27 1994

FOR ASSESSMENT PURPOSES
ONLY - DO NOT RELY ON



SEE MAP
IS 3 31

Application No. *15-6*
Permit No.

70543

IS 3 30

No Final Proof Map available

No Permit Map available