

SECTION 11 T37S R6W W.M.  
JOSEPHINE COUNTY

1" = 400'

RECEIVED  
JAN - 8 1955  
WATER RESOURCES DEP  
SALEM, OREGON

REGISTERED  
29 1994  
WATER RESOURCES  
GRANTS PASS, OR

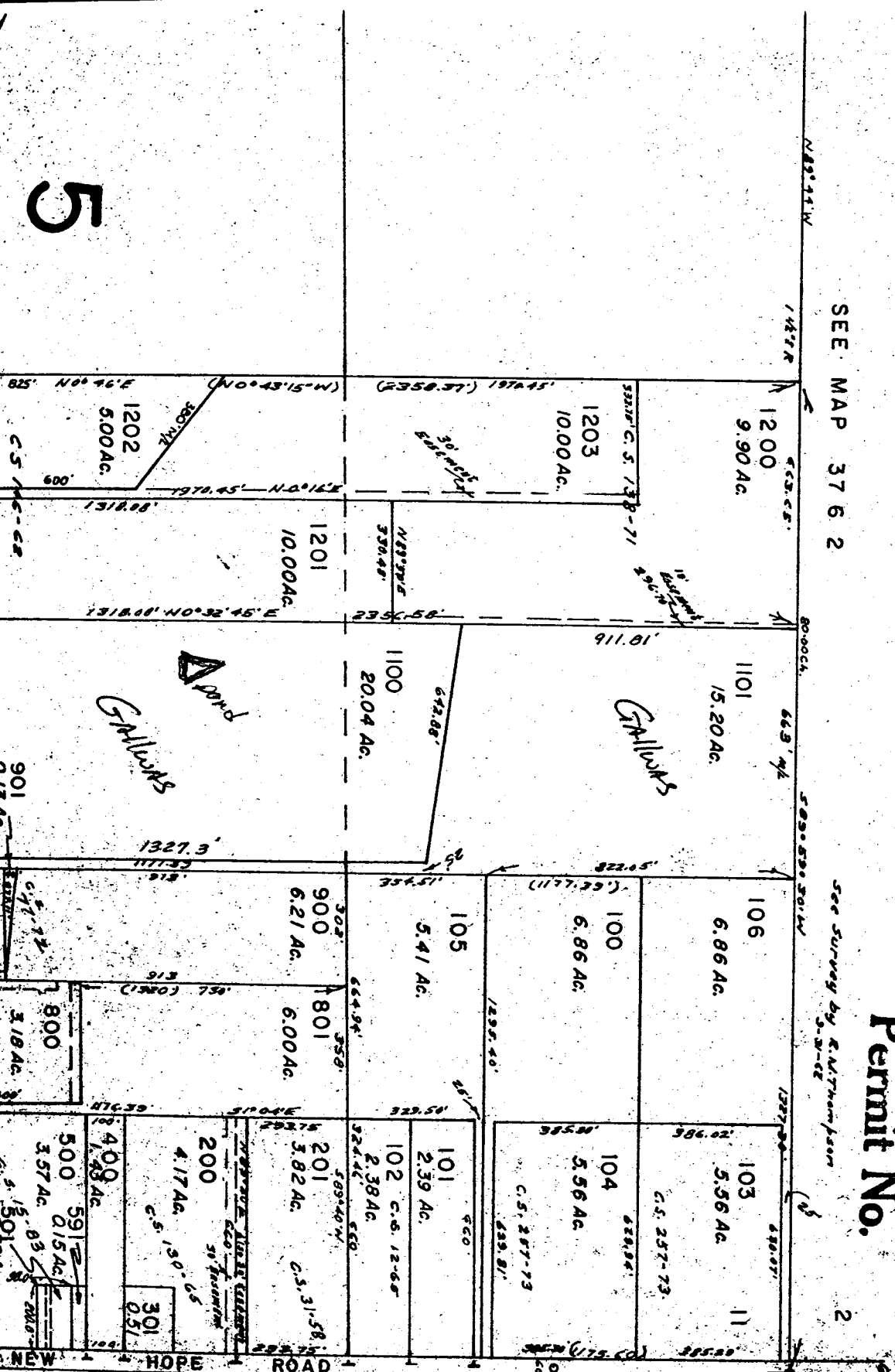
37 6 31

UNITED STATES NO. 70545

Application No. R-76615  
Permit No.

SEE MAP 37 6 2

See Survey by R. M. Thompson  
S. W. Co.



Cancelled Tax

- 300
- 502
- 590
- 890
- 891
- 1401
- 1790
- 1805

5

